

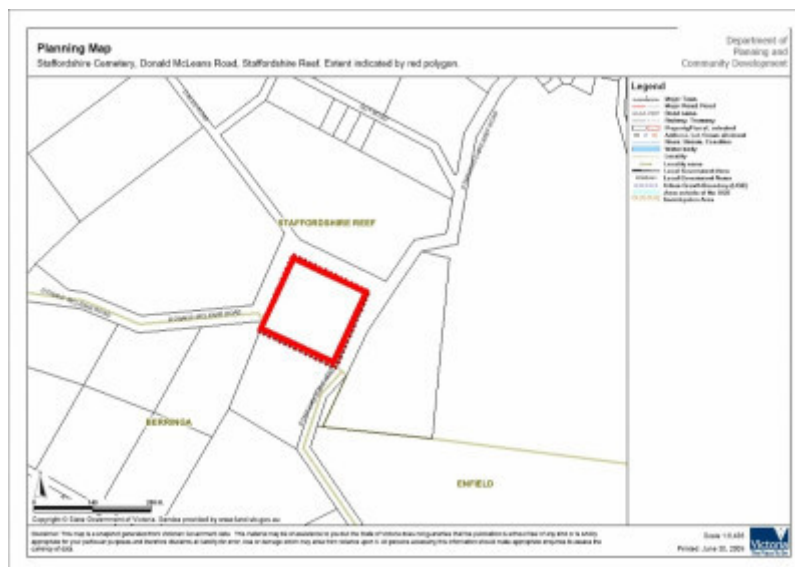
Staffordshire Reef Cemetery



Staffordshire Reef Cemetery
Donald McLeans Rd (view
looking east)



Pinus located within
Staffordshire Reef Cemetery
Donald McLeans Rd



Extent map.jpg

Location

Donald McLeans Road STAFFORDSHIRE REEF, GOLDEN PLAINS SHIRE

Municipality

GOLDEN PLAINS SHIRE

Level of significance

Included in Heritage Overlay

Heritage Overlay Numbers

Heritage Listing

Golden Plains Shire

Statement of Significance

Last updated on -

What is significant?

The Staffordshire Reef Cemetery is situated on allotment 5, section B within the township of Staffordshire Reef. The site was formally gazetted on the 4 December 1863 and is comprised of 10 acres. The cemetery contains the graves of local pioneering families, miners from the local diggings and more recently, former residents of the Staffordshire Reef district. It is bound to the north by Dales Road, to the west by Don McLeans Road, to the east by the Newtown - Berringa Road and to the south by a mature *Pinus* plantation. The cemetery is dominated by a particularly fine specimen of *Pinus canariensis* (Canary Island Pine). The Staffordshire Reef Cemetery does not show the elaborate landscape planning and planting of the other cemeteries in the shire such as the Scarsdale, Cape Clear and Linton Cemeteries. Instead, the cemetery is comprised of clusters of graves widely distributed across the sparse 10 acre reserve, with large spaces in between.

How is it significant?

The Staffordshire Reef Cemetery is of historical, social and architectural (aesthetic) significance to the Golden Plains Shire.

Why is it significant?

The Staffordshire Reef Cemetery is of historical significance as an enduring record of those who have lived and died in the community, as a reflection of the passing phases, ways of life and death, particular events, and as documentary evidence of the districts prosperity and hardships.

The Staffordshire Reef Cemetery is of social significance for reflecting the customs and tastes of the community, for reflecting different religious values, and for reflecting different economic and social status. It is also an important place for passive recreation.

The Staffordshire Reef Cemetery is of architectural (aesthetic) significance for its range of tombstones, memorials and iconography reflecting the aesthetics of different periods and groups within the community.

Heritage Study/Consultant	Golden Plains - Golden Plains Shire Heritage Study Phase 2, Heritage Matters P/L, 2009;
Hermes Number	31702
Property Number	

Physical Description 1

The Staffordshire Reef Cemetery is situated on allotment 5, section B within the township of Staffordshire Reef. The cemetery is bound to the north by Dales Road, to the west by Don McLeans Road, to the east by the Newtown - Berringa Road and to the south by a mature *Pinus* plantation.

The cemetery comprises 10 acres and with clusters of graves widely distributed across the whole reserve with large spaces in between. All the graves and headstones face east towards the rising sun, as is traditional. Pedestrian access to the cemetery is gained through a small wrought iron gate addressing the Newtown - Berringa Road. Vehicular access is gained via a larger gate located off Don McLeans Road, which also accommodates pedestrians. A small timber maintenance hut with a pitched corrugated iron roof is located directly to the east of the vehicular gates. A small toilet block is located on the southern boundary, beneath a large *Pinus canariensis* (Canary Island Pine).

Historical Australian Themes

The Australian Heritage Commission devised the Australian Historic Themes in 2001. The following themes have influenced the historical development of the Staffordshire Reef Cemetery.

9 Marking The Phases of Life

9.7 Dying

9.7.1 Dealing with human remains

9.7.2 Mourning the dead

9.7.3 Remembering the dead

Physical Description 2

Extent of Registration: To the extent of the Staffordshire Reef Cemetery, being Allotment 5K, section B, township of Staffordshire Reef including the grave sites, gravestones and the *Pinus canariensis* (Canary Island Pine).

Integrity

The cemetery is in good condition and retains a high degree of integrity.

This place/object may be included in the Victorian Heritage Register pursuant to the Heritage Act 2017. Check the Victorian Heritage Database, selecting 'Heritage Victoria' as the place source.

For further details about Heritage Overlay places, contact the relevant local council or go to Planning Schemes Online <http://planningschemes.dpcd.vic.gov.au/>