

KOW PLAINS HOMESTEAD



KOW PLAINS HOMESTEAD
SOHE 2008



KOW PLAINS HOMESTEAD
SOHE 2008



KOW PLAINS HOMESTEAD
SOHE 2008



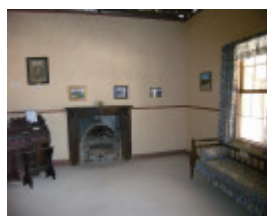
KOW PLAINS HOMESTEAD
SOHE 2008



KOW PLAINS HOMESTEAD
SOHE 2008



KOW PLAINS HOMESTEAD
SOHE 2008



KOW PLAINS HOMESTEAD
SOHE 2008



KOW PLAINS HOMESTEAD
SOHE 2008



h00688 kow plains
homestead restoration 2002



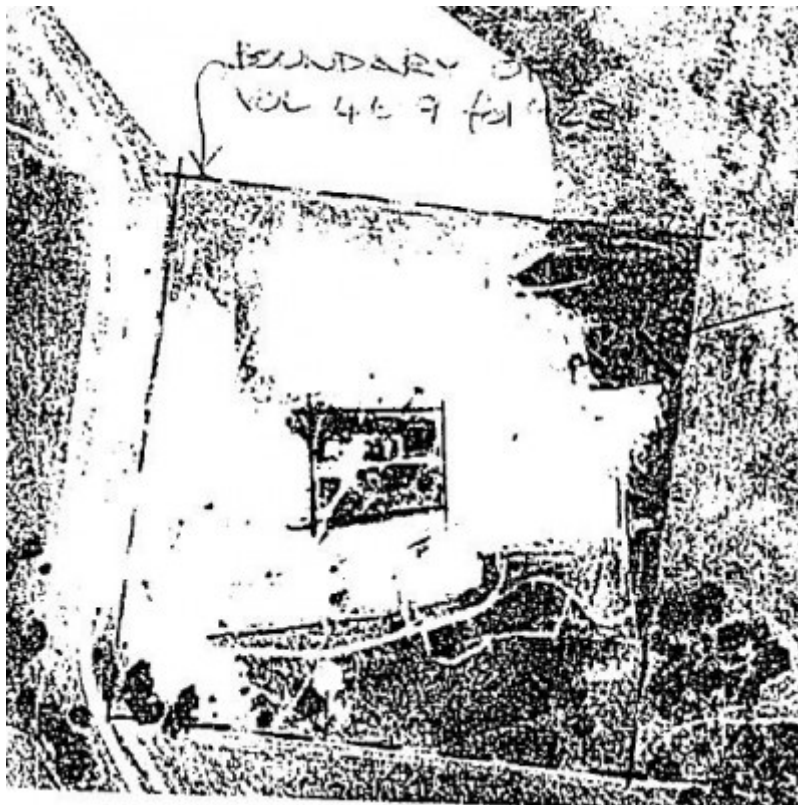
cow plains homestead
cowangle side view of
homestead with chimney



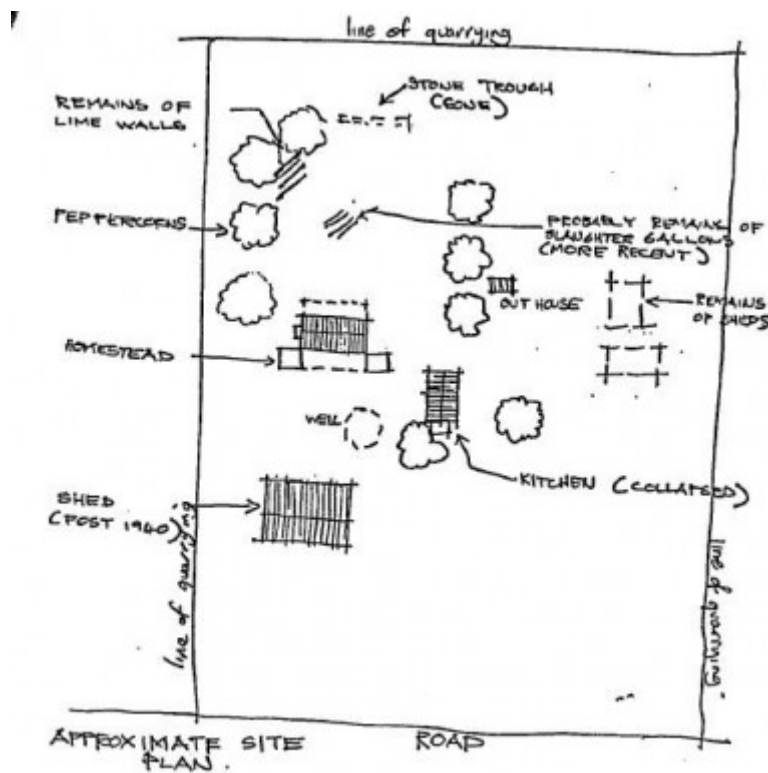
h00688 kow plains
homestead cowangie
cookhouse she project 2003



h00688 kow plains
homestead cowangie privy
she project 2003



H0688 H688 extent a



H0688 H688 extent b

99 COWANGIE SOUTH ROAD COWANGIE, MILDURA RURAL CITY

Municipality

MILDURA RURAL CITY

Level of significance

Registered

Victorian Heritage Register (VHR) Number

H0688

Heritage Overlay Numbers

HO182

VHR Registration

June 15, 1988

Heritage Listing

Victorian Heritage Register

Statement of Significance

Last updated on - June 28, 1999

Cow Plains Homestead Complex is unique for its associations with the earliest preagricultural history of the Mallee when large pastoral runs were the most characteristic form of settlement in this harsh region.

Cow Plains has historical significance as a rare surviving example from this era and that remained as a pastoral run over an unusually long period. Although many properties were subdivided for agricultural purposes following the passage of the Mallee Pastoral Leases Act of 1883, Cow Plains was not subdivided until 1909.

The complex is architecturally significant to the state as an example of the use of local materials and of drop log construction. The homestead, the out-house and the ruins of the kitchen are of drop-log construction comprising a number of upright poles placed approximately 1.2 metres apart to which saplings were attached to form slots on opposite sides of the pole. Unseen pine logs were then fitted into the slots.

[Source: Report to the Minister]

Permit Exemptions

General Exemptions:

General exemptions apply to all places and objects included in the Victorian Heritage Register (VHR). General exemptions have been designed to allow everyday activities, maintenance and changes to your property, which don't harm its cultural heritage significance, to proceed without the need to obtain approvals under the Heritage Act 2017.

Places of worship: In some circumstances, you can alter a place of worship to accommodate religious practices without a permit, but you must **notify** the Executive Director of Heritage Victoria before you start the works or activities at least 20 business days before the works or activities are to commence.

Subdivision/consolidation: Permit exemptions exist for some subdivisions and consolidations. If the subdivision or consolidation is in accordance with a planning permit granted under Part 4 of the *Planning and Environment Act 1987* and the application for the planning permit was referred to the Executive Director of Heritage Victoria as a determining referral authority, a permit is not required.

Specific exemptions may also apply to your registered place or object. If applicable, these are listed below. Specific exemptions are tailored to the conservation and management needs of an individual registered place or object and set out works and activities that are exempt from the requirements of a permit. Specific exemptions prevail if they conflict with general exemptions.

Find out more about heritage permit exemptions [here](#).

Construction dates	1909,
Heritage Act Categories	Registered place,
Other Names	COW PLAINS,
Hermes Number	320
Property Number	

Extent of Registration

AMENDMENT OF REGISTER OF HISTORIC BUILDINGS

Historic Building No. 688.

Cow (Kow) Plains Homestead Cowangie

To the extent of the whole of the whole of the Cow Plains Homestead and its outbuildings and the land in Certificate of Title Volume 4619 Folio 923 to the extent defined in the plan held by the Ministry for Planning and Environment..

[*Victoria Government Gazette* No. G22 15 June 1988 p. 1767]

This place/object may be included in the Victorian Heritage Register pursuant to the Heritage Act 2017. Check the Victorian Heritage Database, selecting 'Heritage Victoria' as the place source.

For further details about Heritage Overlay places, contact the relevant local council or go to Planning Schemes Online <http://planningschemes.dpcd.vic.gov.au/>