

# CRESWICK TOWN HALL AND FORMER MUNICIPAL OFFICES



CRESWICK TOWN HALL  
AND FORMER MUNICIPAL  
OFFICES SOHE 2008



CRESWICK TOWN HALL  
AND FORMER MUNICIPAL  
OFFICES SOHE 2008



1 creswick town hall &  
offices front view town hall  
oct1982



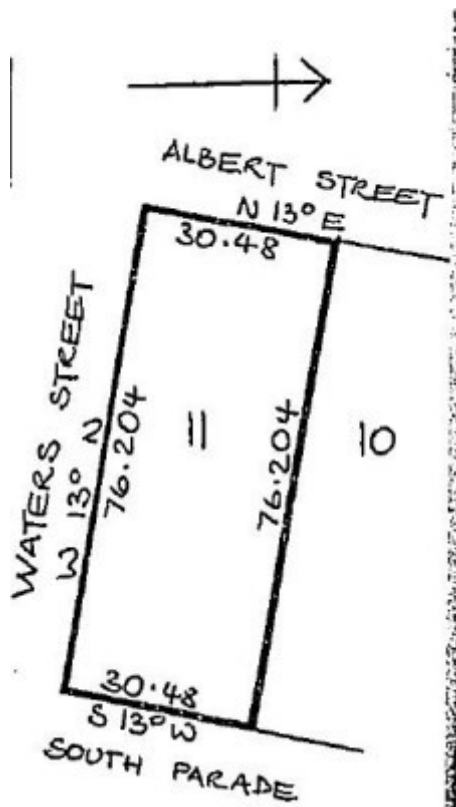
creswick town hall &  
offices creswick shire offices  
aug1985



creswick town hall &  
offices detail town hall facade



creswick town hall &  
offices detail town hall office  
exterior



h00576 plan h0576

### Location

70-72 ALBERT STREET CRESWICK, HEPBURN SHIRE

### Municipality

HEPBURN SHIRE

### Level of significance

Registered

### Victorian Heritage Register (VHR) Number

H0576

### Heritage Overlay Numbers

HO22

### VHR Registration

March 14, 1984

### Heritage Listing

## Statement of Significance

Last updated on - June 22, 1999

The Creswick Town Hall and Municipal Offices were constructed as one building in 1876,

thirteen years after the creation of the Borough of Creswick. The design of the building was the subject of an architectural competition, the winner of which was the architect WRH Creber. The builder was a J Boulton.

The building is of two storeys with a corner tower and is constructed of rendered brick on a bluestone plinth with a slate roof. The design of the exterior is unusual for its squat corner tower with a polygonal bell-shaped roof, the star-shaped openings to the parapet and the segmental-arc'd entry loggia within with the central arch is wider than those flanking it.

The compressed detailing of the facade is continued internally in the plaster decoration to the wall surfaces of the municipal offices which have, by contrast, simple boarded ceilings. The outstanding features of the interior are the spiral bluestone stair and cantilevered balcony over the entry hall, both of which have elaborate cast-iron balusters.

The town hall has a flat coved ceiling with simple plaster wall decorations, a timber dado, highlight windows and an elaborate proscenium. Art-deco roses were later installed on the ceiling.

The imposing nature of the building is reflective of the confidence and prosperity in Creswick in the 1870's. The Creswick gold rushes began early in 1852 but by the late 1860's had lapsed into the doldrums. The discovery in 1872 of a rich alluvial vein at the period of deep lead mining which was the town's mainstay until well into the 20th century.

The building is substantially intact, including its council furniture, with the exception of a cantilevered bio-box located over the main entry to the town hall.

The building is of importance for its unusual and distinctive design, its pre-eminence within the townscape and for its historical associations with the development of the important gold mining town of Creswick.

*[Source: Report to the Minister]*

## Permit Exemptions

### General Exemptions:

General exemptions apply to all places and objects included in the Victorian Heritage Register (VHR). General exemptions have been designed to allow everyday activities, maintenance and changes to your property, which don't harm its cultural heritage significance, to proceed without the need to obtain approvals under the Heritage Act 2017.

**Places of worship:** In some circumstances, you can alter a place of worship to accommodate religious practices without a permit, but you must **notify** the Executive Director of Heritage Victoria before you start the works or activities at least 20 business days before the works or activities are to commence.

**Subdivision/consolidation:** Permit exemptions exist for some subdivisions and consolidations. If the subdivision or consolidation is in accordance with a planning permit granted under Part 4 of the *Planning and Environment Act 1987* and the application for the planning permit was referred to the Executive Director of Heritage Victoria as a determining referral authority, a permit is not required.

Specific exemptions may also apply to your registered place or object. If applicable, these are listed below. Specific exemptions are tailored to the conservation and management needs of an individual registered place or object and set out works and activities that are exempt from the requirements of a permit. Specific exemptions prevail if they conflict with general exemptions.

Find out more about heritage permit exemptions [here](#).

Construction dates	1876,
Architect/Designer	Creber, WRH,
Heritage Act Categories	Registered place,
Hermes Number	322
Property Number	

---

## Extent of Registration

### AMENDMENT OF REGISTER OF HISTORIC BUILDINGS

Historic Building No. 576 Creswick Town Hall and former Municipal Offices, 70 Albert Street, Creswick (to the extent of the building and land entered in the Register Book as Volume 617 Folio 261).

[*Victoria Government Gazette* No. 32 14 March 1984 p. 824]

*This place/object may be included in the Victorian Heritage Register pursuant to the Heritage Act 2017. Check the Victorian Heritage Database, selecting 'Heritage Victoria' as the place source.*

*For further details about Heritage Overlay places, contact the relevant local council or go to Planning Schemes Online <http://planningschemes.dpcd.vic.gov.au/>*