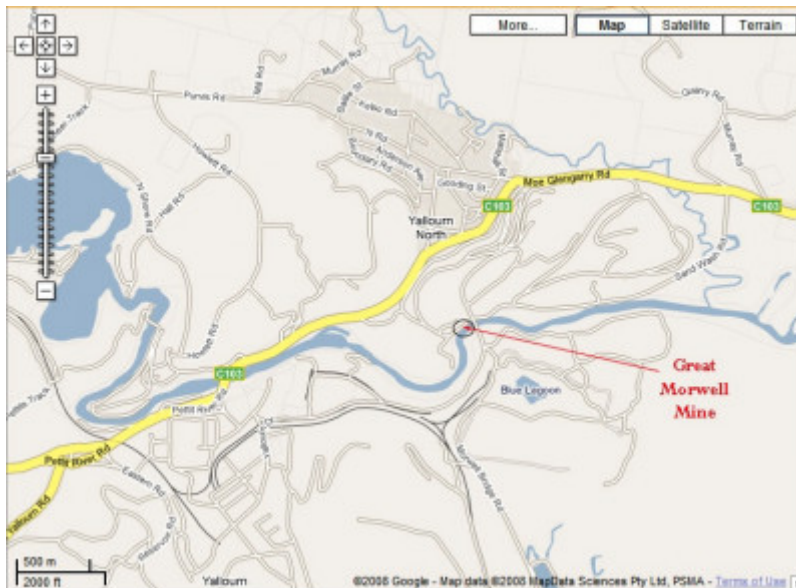


# GREAT MORWELL COAL MINE



Skip on south side of Latrobe River



Locality plan Great Morwell mine

## Location

SAND WASH YALLOURN NORTH AND MORWELL BRIDGE ROAD YALLOURN, LATROBE CITY

## Municipality

LATROBE CITY

## Level of significance

Heritage Inventory Site

## Heritage Inventory (HI) Number

## Heritage Listing

Victorian Heritage Inventory

---

### Statement of Significance

Last updated on - July 10, 2008

State Significance.

Interpretation of Site	The site shows evidence of the early, small scale working at the site, including possible adit workings, small surface works and tramway cuttings that serviced the first open cut workings. The in situ footings relate to a power plant built for the briquetting works - most traces were removed in subsequent road-making.
Other Names	OLD BROWN COAL MINE,
Hermes Number	34898
Property Number	

---

### History

The Great Morwell mine was the first commercial exploitation of the vast brown coal deposits of the Latrobe valley, Gippsland. Mining began in 1887 and operations continued until 1899. It was re-opened by the Victorian government in 1916, and from 1921 it supplied coal to the first of the Valley's coal-fired power stations while the Yallourn pit was being opened. From 1924 it was operated by the SEC, and re-named the Yallourn North Open Cut.

*This place/object may be included in the Victorian Heritage Register pursuant to the Heritage Act 2017. Check the Victorian Heritage Database, selecting 'Heritage Victoria' as the place source.*

*For further details about Heritage Overlay places, contact the relevant local council or go to Planning Schemes Online <http://planningschemes.dpcd.vic.gov.au/>*