

DARNLEE



DARNLEE SOHE 2008



1 darnlee lansell road toorak
front view



20160317 110742



20160317 113453



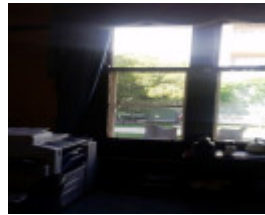
20160317 113459



20160317 113503



20160317 113512



20160317 113823



20160317 113837



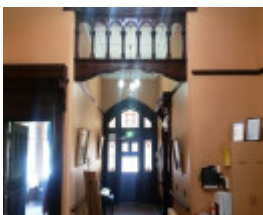
20160317 113958



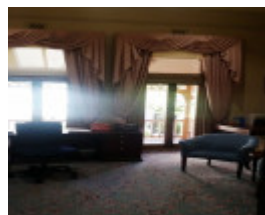
20160317 114002



20160317 114218



20160317 114222



20160317 114238



20160317 114342



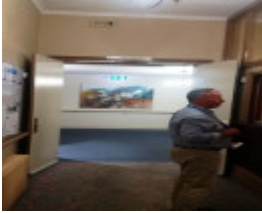
20160317 114542



20160317 114549



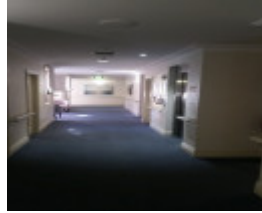
20160317 114654



20160317 114807



20160317 114822



20160317 114831



20160317 114852



20160317 114951



20160317 115413



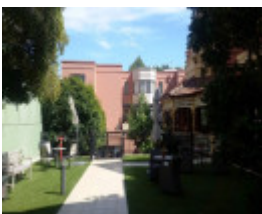
20160317 115428



20160317 115433



20160317 115456



20160317 115502



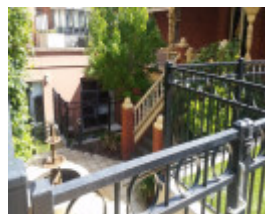
20160317 120034



20160317 120101



20160317 120108



20160317 120656



20160317 120800



20160317 120805



20160317 120817



20160317 120827



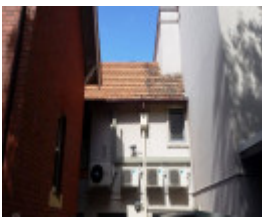
20160317 120846



20160317 122542



20160317 122546



20160317 123019



20160317 123023



20160317 123255



20160317 123444



20160317 123451



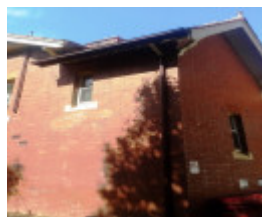
20160317 123528



20160317 123620



20160317 123749



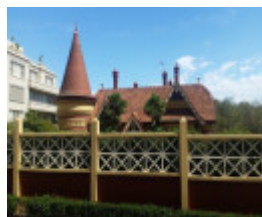
20160317 124043



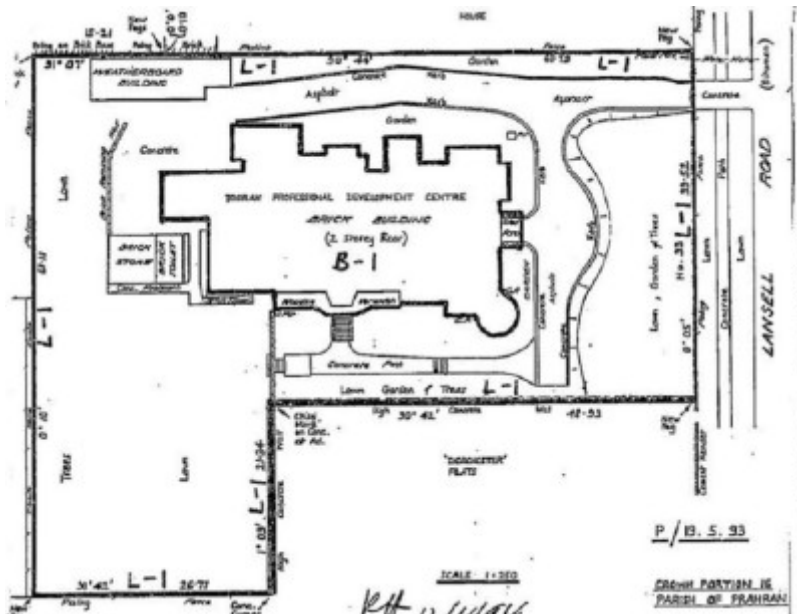
20160317 124045



20160317 124049



20160317 124219



h01024 plan h1024

Location

33 LANSELL ROAD TOORAK, STONNINGTON CITY

Municipality

STONNINGTON CITY

Level of significance

Registered

Victorian Heritage Register (VHR) Number

H1024

Heritage Overlay Numbers

HO69

VHR Registration

December 1, 1994

Heritage Listing

Victorian Heritage Register

Statement of Significance

Last updated on - August 10, 1999

What is significant?

Darnlee, constructed c. 1899 by builder J. Gibb, was designed by architect Leonard J. Flannagan for Mr C. McIntyre. It was a private residence until the Second World War when it was used as a hostel for the WAAF. Subsequently Darnlee has been occupied by the Health Department, serving as a tuberculosis rehabilitation centre, and the Department of Education, and was converted into an aged care facility in the late 1990s. Darnlee is a finely detailed and essentially intact example of a Federation Queen Anne style residence. It is particularly noteworthy for its numerous gables and elaborately carved bargeboards, its ornamental terracotta finials, and its corner tower with a steeply pitched conical roof. Of particular note is the use and execution of timber decorative and structural elements; the front gable is decoratively carved and heavy turned timber columns support the timber framing of the entrance porch. The entrance also retains its original leadlighting around the front door and the encaustic tile pavement. Much of the internal elaborate plaster ceilings and cornices, fireplaces and surrounds, panelled timber doors with distinctive architraves and stained glass panels are intact.

How is it significant?

Darnlee is of architectural and historical significance to the State of Victoria.

Why is it significant?

Darnlee is of architectural significance as one of the best and most intact examples of Melbourne's Federation Style architecture. The Federation Queen Anne style was the dominant style in Australian domestic architecture immediately before and after 1900, reflecting the influence of the revival of Queen Anne architecture in England from 1870. Darnlee is a particularly finely detailed and essentially intact example of the genre.

Darnlee is of architectural significance as an important example of the work of the notable architect Leonard Flannagan (1864-1946?), whose designs included many dwellings, several churches and convents and works for the Prahran and Malvern Tramways Trust.

Darnlee is of historical significance because it provides evidence of the way of life of prominent families of early 20th century Melbourne. A number of influential Victorian families owned the property, including the McIntyre family, the Winter-Irving family, the Riggall family and Sarah McKay, widow of HV McKay, the inventor of the Sunshine Harvester and important early Australian industrialist.

Permit Exemptions

General Exemptions:

General exemptions apply to all places and objects included in the Victorian Heritage Register (VHR). General exemptions have been designed to allow everyday activities, maintenance and changes to your property, which don't harm its cultural heritage significance, to proceed without the need to obtain approvals under the Heritage Act 2017.

Places of worship: In some circumstances, you can alter a place of worship to accommodate religious practices without a permit, but you must [notify](#) the Executive Director of Heritage Victoria before you start the works or activities at least 20 business days before the works or activities are to commence.

Subdivision/consolidation: Permit exemptions exist for some subdivisions and consolidations. If the subdivision or consolidation is in accordance with a planning permit granted under Part 4 of the *Planning and Environment Act 1987* and the application for the planning permit was referred to the Executive Director of Heritage Victoria as a determining referral authority, a permit is not required.

Specific exemptions may also apply to your registered place or object. If applicable, these are listed below. Specific exemptions are tailored to the conservation and management needs of an individual registered place or

object and set out works and activities that are exempt from the requirements of a permit. Specific exemptions prevail if they conflict with general exemptions.

Find out more about heritage permit exemptions [here](#).

Construction dates	1899,
Architect/Designer	Flannagan, Leonard,
Heritage Act Categories	Registered place,
Hermes Number	3570
Property Number	

History

Contextual History:History of Place:

Between 1924 and 1927 the house was known as 'Somercotes'.

Between 1927 and 1949 the house was known as 'Rays del Sol'.

Between 1949 and 1966 the house was known as 'Sewell'. (NT report)

Extent of Registration

1AMENDMENT OF REGISTER OF HISTORIC BUILDINGS

Historic Building No. 1024-

Darnlee, 33 Lansell Road, Toorak.

(To the extent of:

1. All of the building known as Darnlee, excluding the brick store and toilet building and the weatherboard building, marked B-1 on Plan 604683 and endorsed by the Chairperson, Historic Buildings Council and held by the Director, Historic Buildings Council.
2. All of the land in Lot 2 on Plan of Subdivision No. 20276, Parish of Prahran being part of Crown Portion 16 marked L-1 on Plan 604683 and endorsed by the Chairperson, Historic Buildings Council and held by the Director, Historic Buildings Council.)

[*Victoria Government Gazette* No. G48 1 December 1994 p.3196]

This place/object may be included in the Victorian Heritage Register pursuant to the Heritage Act 2017. Check the Victorian Heritage Database, selecting 'Heritage Victoria' as the place source.

For further details about Heritage Overlay places, contact the relevant local council or go to Planning Schemes Online <http://planningschemes.dpcd.vic.gov.au/>