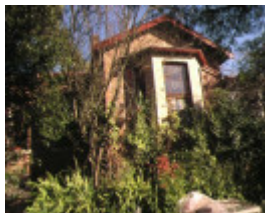
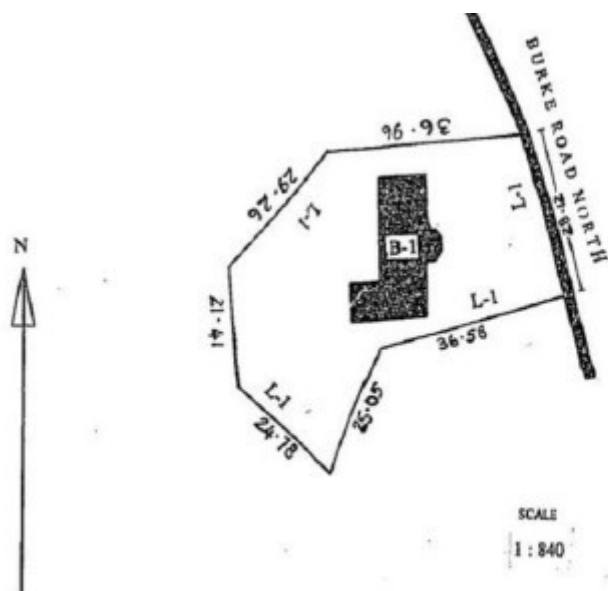


# CHARTERISVILLE



1 charterisville ivanhoe east facade



h01140 plan h1140

## Location

77-79 BURKE ROAD NORTH IVANHOE, BANYULE CITY

## Municipality

BANYULE CITY

## Level of significance

Registered

## **Victorian Heritage Register (VHR) Number**

H1140

## **Heritage Overlay Numbers**

H015

## **VHR Registration**

February 8, 1996

## **Heritage Listing**

Victorian Heritage Register

---

## **Statement of Significance**

Last updated on - May 6, 1999

What is significant?

Charterisville was built c. 1840 by David Charteris McArthur, Melbourne's first bank manager. The house was built of sandstone quarried on the site and remains today as a partially complete dwelling with original cellar, enclosed rear verandah and panelled window and door openings.

How is it significant?

Charterisville is significant for historical reasons.

Why is it significant?

Charterisville is historically significant for its strong association with the artists of the Heidelberg School. In 1887, following the death of banker David McArthur, Charterisville passed into the hands of a dairy farmer who leased part of Charterisville to artist Walter Withers. Charterisville became an important centre and artists' colony within the Heidelberg School and went on to become the longest surviving artists' camp in Melbourne. Norman and Lionel Lindsay recorded the beauty of Charterisville and in 1893 Phillips Fox and Tudor St George started Australia's first Summer School at Charterisville.

Charterisville is particularly important as the first locale in which women artists painted and produced distinctive works.

Charterisville is historically significant for its association with David Charteris McArthur. McArthur arrived in Melbourne in 1838 and at the age of twenty-eight opened Melbourne's first bank, the Bank of Australasia. McArthur moved to Charterisville in 1840 and gave the property his family name. At the time of McArthur's occupation, Charterisville had extensive grounds and bore the mark of a home of an important citizen; the property also contained cottages, coachhouse, stables and vinery. McArthur was an important member of early Melbourne society and became President of the Trustees of the Public Library, a Trustee of the Botanical Gardens, a foundation member of the Mechanics Institute (later the Melbourne Athenaeum) and President of the Old Colonists Association.

## **Permit Exemptions**

**General Exemptions:**

General exemptions apply to all places and objects included in the Victorian Heritage Register (VHR). General exemptions have been designed to allow everyday activities, maintenance and changes to your property, which don't harm its cultural heritage significance, to proceed without the need to obtain approvals under the Heritage Act 2017.

Places of worship: In some circumstances, you can alter a place of worship to accommodate religious practices without a permit, but you must **notify** the Executive Director of Heritage Victoria before you start the works or activities at least 20 business days before the works or activities are to commence.

Subdivision/consolidation: Permit exemptions exist for some subdivisions and consolidations. If the subdivision or consolidation is in accordance with a planning permit granted under Part 4 of the *Planning and Environment Act 1987* and the application for the planning permit was referred to the Executive Director of Heritage Victoria as a determining referral authority, a permit is not required.

Specific exemptions may also apply to your registered place or object. If applicable, these are listed below. Specific exemptions are tailored to the conservation and management needs of an individual registered place or object and set out works and activities that are exempt from the requirements of a permit. Specific exemptions prevail if they conflict with general exemptions.

Find out more about heritage permit exemptions [here](#).

### **Specific Exemptions:**

General Conditions: 1. All exempted alterations are to be planned and carried out in a manner which prevents damage to the fabric of the registered place or object. General Conditions: 2. Should it become apparent during further inspection or the carrying out of works that original or previously hidden or inaccessible details of the place or object are revealed which relate to the significance of the place or object, then the exemption covering such works shall cease and the Executive Director shall be notified as soon as possible. Note: All archaeological places have the potential to contain significant sub-surface artefacts and other remains. In most cases it will be necessary to obtain approval from Heritage Victoria before the undertaking any works that have a significant sub-surface component. General Conditions: 3. If there is a conservation policy and plan approved by the Executive Director, all works shall be in accordance with it. Note: The existence of a Conservation Management Plan or a Heritage Action Plan endorsed by Heritage Victoria provides guidance for the management of the heritage values associated with the site. It may not be necessary to obtain a heritage permit for certain works specified in the management plan. General Conditions: 4. Nothing in this declaration prevents the Executive Director from amending or rescinding all or any of the permit exemptions. General Conditions: 5. Nothing in this declaration exempts owners or their agents from the responsibility to seek relevant planning or building permits from the responsible authorities where applicable. Regular Site Maintenance : The following site maintenance works are permit exempt under section 66 of the Heritage Act 1995, a) regular site maintenance provided the works do not involve the removal or destruction of any significant above-ground features or sub-surface archaeological artefacts or deposits; b) the maintenance of an item to retain its conditions or operation without the removal of or damage to the existing fabric or the introduction of new materials; c) cleaning including the removal of surface deposits, organic growths, or graffiti by the use of low pressure water and natural detergents and mild brushing and scrubbing; d) repairs, conservation and maintenance to plaques, memorials, roads and paths, fences and gates and drainage and irrigation. e) the replacement of existing services such as cabling, plumbing, wiring and fire services that uses existing routes, conduits or voids, and does not involve damage to or the removal of significant fabric. Note: Surface patina which has developed on the fabric may be an important part of the item's significance and if so needs to be preserved during maintenance and cleaning. Note: Any new materials used for repair must not exacerbate the decay of existing fabric due to chemical incompatibility, obscure existing fabric or limit access to existing fabric for future maintenance. Repair must maximise protection and retention of fabric and include the conservation of existing details or elements. Fire Suppression Duties : The following fire suppression duties are permit exempt under section 66 of the Heritage Act 1995, a) Fire suppression and fire fighting duties provided the works do not involve the removal or destruction of any significant above-ground features or sub-surface archaeological artefacts or deposits; b) Fire suppression activities such as fuel reduction burns, and fire control line construction, provided all significant historical and archaeological features are appropriately recognised and protected; Note: Fire management authorities should be aware of the location, extent and

significance of historical and archaeological places when developing fire suppression and fire fighting strategies. The importance of places listed in the Heritage Register must be considered when strategies for fire suppression and management are being developed. Weed and Vermin Control : The following weed and vermin control activities are permit exempt under section 66 of the Heritage Act 1995, a) Weed and vermin control activities provided the works do not involve the removal or destruction of any significant above-ground features or sub-surface archaeological artefacts or deposits; Note: Particular care must be taken with weed and vermin control works where such activities may have a detrimental affect on the significant fabric of a place. Such works may include the removal of ivy, moss or lichen from an historic structure or feature, or the removal of burrows from a site that has archaeological values. Landscape Maintenance : The following landscape maintenance works are permit exempt under section 66 of the Heritage Act 1995, a) landscape maintenance works provided the activities do not involve the removal or destruction of any significant above-ground features or sub-surface archaeological artefacts or deposits; b) watering, mowing, top-dressing and fertilising necessary for the continued health of plants, without damage or major alterations to layout, contours, plant species or other significant landscape features; c) pruning to control size, improve shape, flowering or fruiting and the removal of diseased, dead or dangerous material, not exceeding 20% of the crown of the tree within a period of two years; d) tree surgery by a qualified horticulturalist or tree surgeon necessary for the health of those plants. Public Safety and Security : The following public safety and security activities are permit exempt under section 66 of the Heritage Act 1995, a) public safety and security activities provided the works do not involve the removal or destruction of any significant above-ground structures or sub-surface archaeological artefacts or deposits; b) the erection of temporary security fencing, scaffolding, hoardings or surveillance systems to prevent unauthorised access or secure public safety which will not adversely affect significant fabric of the place including archaeological features; c) development including emergency stabilisation necessary to secure safety where a site feature has been irreparably damaged or destabilised and represents a safety risk to its users or the public. Note: Urgent or emergency site works are to be undertaken by an appropriately qualified specialist such as a structural engineer, or other heritage professional. Signage and Site Interpretation : The following Signage and Site Interpretation activities are permit exempt under section 66 of the Heritage Act 1995, a) signage and site interpretation activities provided the works do not involve the removal or destruction of any significant above-ground structures or sub-surface archaeological artefacts or deposits; b) the erection of non-illuminated signage for the purpose of ensuring public safety or to assist in the interpretation of the heritage significance of the place or object and which will not adversely affect significant fabric including landscape or archaeological features of the place or obstruct significant views of and from heritage values or items; c) signage and site interpretation products must be located and be of a suitable size so as not to obscure or damage significant fabric of the place; d) signage and site interpretation products must be able to be later removed without causing damage to the significant fabric of the place; Note: The development of signage and site interpretation products must be consistent in the use of format, text, logos, themes and other display materials. Note: Where possible, the signage and interpretation material should be consistent with other schemes developed on similar or associated sites. It may be necessary to consult with land managers and other stakeholders concerning existing schemes and strategies for signage and site interpretation. Minor Works : Note: Any Minor Works that in the opinion of the Executive Director will not adversely affect the heritage significance of the place may be exempt from the permit requirements of the Heritage Act. A person proposing to undertake minor works may submit a proposal to the Executive Director. If the Executive Director is satisfied that the proposed works will not adversely affect the heritage values of the site, the applicant may be exempted from the requirement to obtain a heritage permit. If an applicant is uncertain whether a heritage permit is required, it is recommended that the permits co-ordinator be contacted. Site specific permit exemptions:

\* The demolition or removal of works to the exterior post 1906.

\* Removal of existing carpets/flexible floor coverings eg. vinyl

\* Installation of flexible floor coverings and carpets.

\* Installation of curtain track, rods, blinds and other window dressings.

\* Refurbishment of bathroom/toilet/ensuite including removal of existing sanitary fixtures and associated piping, mirrors and floor coverings.

\* Removal of existing kitchen benches and fixtures, including associated plumbing and wiring.

\* Removal of non-original window dressings/treatments.

\* Re-painting of previously painted interior surfaces.

Construction dates            1840,

Heritage Act Categories    Registered place,

Hermes Number 4390

Property Number

---

## Extent of Registration

### AMENDMENT OF REGISTER OF HISTORIC BUILDINGS

Historic Building No. 1140

Charterisville, 77 Burke Road North, Ivanhoe, City of Banyule.

#### *Extent*

To the extent of:

1. The building known as Charterisville, being the building marked B-1 on plan 606274 endorsed by the Chair, Historic Buildings Council and held by the Director, Historic Buildings Council.
2. All of the land described in Certificate of Title Volume 9377 Folio 507, as marked L-1 on plan 606274 endorsed by the Chair, Historic Buildings Council and held by the Director, Historic Buildings Council.

[*Victoria Government Gazette* No. G5 8 February 1996 p.323]

*This place/object may be included in the Victorian Heritage Register pursuant to the Heritage Act 2017. Check the Victorian Heritage Database, selecting 'Heritage Victoria' as the place source.*

*For further details about Heritage Overlay places, contact the relevant local council or go to Planning Schemes Online <http://planningschemes.dpcd.vic.gov.au/>*