

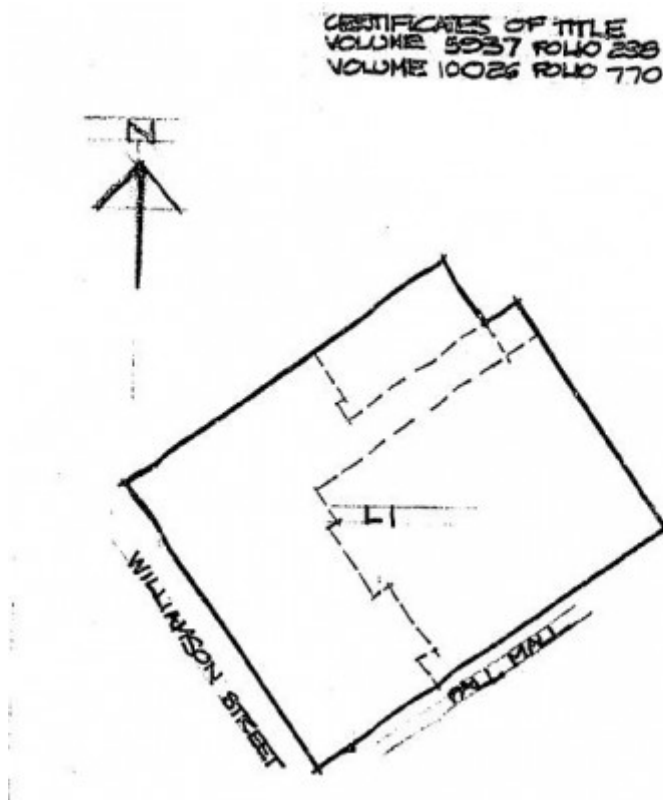
BENDIGO POST OFFICE



BENDIGO POST OFFICE
SOHE 2008



1 bendigo post office front
view



h01080 plan h1080

Location

51-73 PALL MALL BENDIGO, GREATER BENDIGO CITY

Municipality

GREATER BENDIGO CITY

Level of significance

Registered

Victorian Heritage Register (VHR) Number

H1080

Heritage Overlay Numbers

HO226

VHR Registration

April 20, 1995

Heritage Listing

Victorian Heritage Register

Statement of Significance

Last updated on - May 5, 1999

What is significant?

The Bendigo Post Office, designed by Public Works architect George W Watson was constructed between 1883 and 1887. The contractors were McCulloch and McAlpine.

The two storey brick structure with basement has unpainted rendered facades and is dominated by 43m high clock tower complete with 6 bell carillon. The facades are elaborately decorated with Corinthian pilasters, balustrading, lions' heads and the state mansard roof with cast iron ridging and finials.

The "back building" situated to the west of the main building is a single storey structure with enriched outer perimeter wall, and is linked to the main building by iron gates.

Why is it significant?

The Bendigo Post Office is of architectural, historic, and aesthetic significance to Victoria.

How is it significant?

The Bendigo Post Office is an extraordinary example of a provincial post office, being of a grand scale and flamboyant style. An outstanding example of Franco German Renaissance Revival style, it represents a departure from the austere Classicism of the Wardell years. The interior, as well as the exterior, reflects the elaborate stylistic development.

The grandeur of scale and wealth of intricate detail of the Bendigo Post Office demonstrates the prominent position enjoyed by Bendigo at the peak of its development as a gold town. This significance is reinforced by its relationship with the nearby Law Courts.

The Bendigo Post Office is important as a seminal design, directly influencing the adjoining Law Courts, the Shamrock Hotel opposite, the Bendigo Town Hall alterations and a small number of later post offices. It is also of importance for its influence on the development of architectural style within the Public Works Department in the post-Wardell years.

The Bendigo Post Office is important for its association with Robert Burrowes, MLA for Bendigo and Minister for Mines in the O'Loughlin Government who through his advocacy with the Minister for Public Works, endowed Bendigo with its fine Post Office building and adjoining Law Courts. It is also associated with George Watson, architect with the Public Works Department.

The "back building" to the west of the main post office has aesthetic value for the manner in which it addresses Rosalind Park, and historical, value for the functional link with the post office itself.

The Bendigo Post Office is substantially intact, although there have been changes to the interior of the first floor level, and to the interior of the "back building".

[Source: Report to the Minister.]

Permit Exemptions

General Exemptions:

General exemptions apply to all places and objects included in the Victorian Heritage Register (VHR). General exemptions have been designed to allow everyday activities, maintenance and changes to your property, which don't harm its cultural heritage significance, to proceed without the need to obtain approvals under the Heritage Act 2017.

Places of worship: In some circumstances, you can alter a place of worship to accommodate religious practices without a permit, but you must [notify](#) the Executive Director of Heritage Victoria before you start the works or activities at least 20 business days before the works or activities are to commence.

Subdivision/consolidation: Permit exemptions exist for some subdivisions and consolidations. If the subdivision or consolidation is in accordance with a planning permit granted under Part 4 of the *Planning and Environment Act 1987* and the application for the planning permit was referred to the Executive Director of Heritage Victoria as a determining referral authority, a permit is not required.

Specific exemptions may also apply to your registered place or object. If applicable, these are listed below. Specific exemptions are tailored to the conservation and management needs of an individual registered place or object and set out works and activities that are exempt from the requirements of a permit. Specific exemptions prevail if they conflict with general exemptions.

Find out more about heritage permit exemptions [here](#).

Construction dates	1883,
Architect/Designer	Watson, George W.,
Heritage Act Categories	Registered place,
Hermes Number	4739
Property Number	

Extent of Registration

AMENDMENT OF REGISTER OF HISTORIC BUILDINGS

Historic Building No. 1080.

Bendigo Post Office, Pall Mall, Bendigo.

(To the extent of:

1. All of the building known as Bendigo Post Office, comprising the main Post Office building marked B-1, the "back building" marked B-2 and all the fences and gates marked B-3 on Plan 607039A, endorsed by the Chair, Historic Buildings Council and held by the Director, Historic Buildings Council, and
2. All of the land described in Certificate of Title Volume 5937 Folio 238 and Volume 10026 Folio 770 marked L-1 on Plan 607039B endorsed by the Chair, Historic Buildings Council and held by the Director, Historic Buildings Council.)

[*Victoria Government Gazette* No. G15 20 April 1995 pp.931-932]

This place/object may be included in the Victorian Heritage Register pursuant to the Heritage Act 2017. Check the Victorian Heritage Database, selecting 'Heritage Victoria' as the place source.

For further details about Heritage Overlay places, contact the relevant local council or go to Planning Schemes Online <http://planningschemes.dpcd.vic.gov.au/>