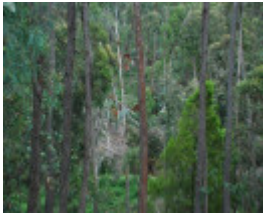

YACKANDANDAH CREEK HYDRAULIC GOLD SLUICING PIT



YACKANDANDAH CREEK
HYDRAULIC GOLD
SLUICING PIT SOHE 2008



1 yackandandah creek
hydraulic gold sluicing pit
near beechworth cement
workings

Location

NUMBER ONE LINK ROAD STANLEY, INDIGO SHIRE

Municipality

INDIGO SHIRE

Level of significance

Registered

Victorian Heritage Register (VHR) Number

H1227

Heritage Overlay Numbers

HO215

VHR Registration

November 28, 1996

Heritage Listing

Victorian Heritage Register

Statement of Significance

Last updated on - May 11, 1999

What is significant?

The Yackandandah Creek Hydraulic Gold Sluicing Pit consists of an excavation about 200 metres by 100 metres containing a network of pebble dumps, tail races and drainage adits. Water for sluicing would have been delivered to the site by a high pressure pipeline from higher up the creek and then directed at the gold bearing deposits. The technology was introduced into Victoria in about 1855.

How is it significant?

The Yackandandah Creek Hydraulic Gold Sluicing Pit is of historical, archaeological and scientific importance to the State of Victoria.

Why is it significant?

The Yackandandah Creek Hydraulic Gold Sluicing Pit is historically and scientifically important as a characteristic and well preserved example of an early form of gold mining. Gold mining sites are of crucial importance for the pivotal role they have played since 1851 in the development of Victoria. Hydraulic sluicing of alluvial gold deposits is an important key ingredient in an understanding of gold mining technology as it was employed in country where water was plentiful and perennial.

The Yackandandah Creek Hydraulic Gold Sluicing Pit is archaeologically important for its potential to yield artefacts and evidence which will be able to provide significant information about the cultural history of gold mining and the gold seekers themselves.

Permit Exemptions

General Exemptions:

General exemptions apply to all places and objects included in the Victorian Heritage Register (VHR). General exemptions have been designed to allow everyday activities, maintenance and changes to your property, which don't harm its cultural heritage significance, to proceed without the need to obtain approvals under the Heritage Act 2017.

Places of worship: In some circumstances, you can alter a place of worship to accommodate religious practices without a permit, but you must [notify](#) the Executive Director of Heritage Victoria before you start the works or activities at least 20 business days before the works or activities are to commence.

Subdivision/consolidation: Permit exemptions exist for some subdivisions and consolidations. If the subdivision or consolidation is in accordance with a planning permit granted under Part 4 of the *Planning and Environment Act 1987* and the application for the planning permit was referred to the Executive Director of Heritage Victoria as a determining referral authority, a permit is not required.

Specific exemptions may also apply to your registered place or object. If applicable, these are listed below. Specific exemptions are tailored to the conservation and management needs of an individual registered place or object and set out works and activities that are exempt from the requirements of a permit. Specific exemptions prevail if they conflict with general exemptions.

Find out more about heritage permit exemptions [here](#).

Specific Exemptions:

General Conditions:

1. All exempted alterations are to be planned and carried out in a manner which prevents damage to the fabric of the registered place or object.
2. Should it become apparent during further inspection or the carrying out of alterations that original or previously hidden or inaccessible details of the place or object are revealed which relate to the significance of the place or object, then the exemption covering such alteration shall cease and the Executive Director shall be notified as soon as possible.
3. If there is a conservation policy and plan approved by the Executive Director, all works shall be in accordance with it.
4. Nothing in this declaration prevents the Executive Director from amending or rescinding all or any of the permit exemptions.
5. Nothing in this declaration exempts owners or their agents from the responsibility to seek relevant planning or building permits from the responsible authority where applicable.

No permits are required for the following classes of works provided they are carried out in accordance with the provisions of the Conservation Plan For Historic Mining Sites prepared by David Bannear in 1996.

- * Mineral Exploration
- * Fire suppression duties
- * Timber production
- * Weed and vermin control
- * Public safety
- * Rehabilitation

Construction dates 1851,
Heritage Act Categories Registered place, Registered archaeological place,
Hermes Number 5009
Property Number

Extent of Registration

NOTICE OF REGISTRATION

As Executive Director for the purpose of the Heritage Act, I give notice under Section 46 that the Victorian Heritage Register is amended by including the Heritage Register Number 1227 in the category described as a Heritage and Archaeological Place:

Yackandandah Creek Hydraulic Gold Sluicing Pit, Number One Road, (10.25 kms east of Beechworth), Indigo Shire Council.

Extent:

1. All of the land including the sluicing pit, pebble dumps, and water races and any other remains of hydraulic gold workings within a radius of 200 metres of a point with Australian Map Grid co-ordinates E821 N769 on 1:100,000 map sheet number 8225 Albury.

Dated 7 November 1996

RAY TONKIN
Executive Director

[Victoria Government Gazette No. G47 28 November 1996 p.3073]

This place/object may be included in the Victorian Heritage Register pursuant to the Heritage Act 2017. Check the Victorian Heritage Database, selecting 'Heritage Victoria' as the place source.

For further details about Heritage Overlay places, contact the relevant local council or go to Planning Schemes Online <http://planningschemes.dpcd.vic.gov.au/>