

## BATS RIDGE FAUNAL RESERVE, LIME KILNS



BATS RIDGE FAUNAL RESERVE, LIME KILNS FEATURE



BATS RIDGE FAUNAL RESERVE, LIME KILNS FEATURE - STORE ROOM SPIT 1, TRENCH 1



BATS RIDGE FAUNAL RESERVE, LIME KILNS FEATURE



BATS RIDGE FAUNAL RESERVE, LIME KILNS FEATURE - STOREROOM DOORWAY NORTHEAST AFTER EXCAVATION



BATS RIDGE FAUNAL RESERVE, LIME KILNS



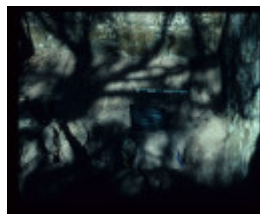
BATS RIDGE FAUNAL RESERVE, LIME KILNS FEATURE - STOREROOM DOORWAY NORTHEAST AFTER EXCAVATION



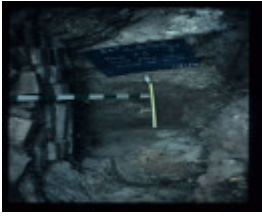
BATS RIDGE FAUNAL RESERVE, LIME KILNS FEATURE



BATS RIDGE FAUNAL RESERVE, LIME KILNS FEATURE - STOREROOM AFTER EXCAVATION



BATS RIDGE FAUNAL RESERVE, LIME KILNS FEATURE - STOREROOM AFTER EXCAVATION



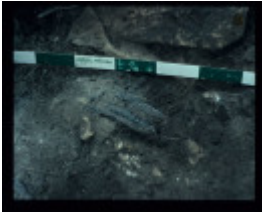
BATS RIDGE FAUNAL RESERVE, LIME KILNS FEATURE - KILN # 3 INSIDE VIEW, WALL FLOOR OF KILN



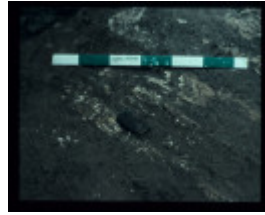
BATS RIDGE FAUNAL RESERVE, LIME KILNS FEATURE - KILN # 3 INSIDE VIEW, WALL DETAIL OF VENT HOLE AND RIGHT WALL



BATS RIDGE FAUNAL RESERVE, LIME KILNS FEATURE - KILN # 3 INSIDE VIEW, WALL DETAIL OF VENT HOLE AND LEFT WALL



BATS RIDGE FAUNAL RESERVE, LIME KILNS FEATURE



BATS RIDGE FAUNAL RESERVE, LIME KILNS FEATURE



BATS RIDGE FAUNAL RESERVE, LIME KILNS - KILN # 3 INSIDE VIEW, WALL DETAIL OF VENT HOLE



BATS RIDGE FAUNAL RESERVE, LIME KILNS FEATURE - KILN # 3 INSIDE VIEW, WALL



BATS RIDGE FAUNAL RESERVE, LIME KILNS FEATURE - STOREROOM NORTHEAST DOORWAY SURFACE



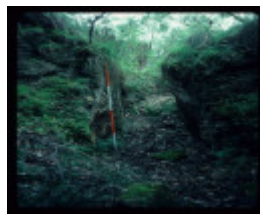
BATS RIDGE FAUNAL RESERVE, LIME KILNS FEATURE - STOREROOM NORTHEAST DOORWAY SURFACE



BATS RIDGE FAUNAL RESERVE, LIME KILNS FEATURE



BATS RIDGE FAUNAL RESERVE, LIME KILNS FEATURE



BATS RIDGE FAUNAL RESERVE, LIME KILNS FEATURE

**Location**

BATS RIDGE FAUNA RESERVE PORTLAND WEST, GLENELG SHIRE

## **Municipality**

GLENELG SHIRE

## **Level of significance**

Heritage Inventory Site

## **Heritage Inventory (HI) Number**

H7121-0002

## **Heritage Listing**

Victorian Heritage Inventory

---

Hermes Number 6587

Property Number

---

## **History**

Heritage Inventory History of Site: Constructed around 1885 by J. Kempton.

*This place/object may be included in the Victorian Heritage Register pursuant to the Heritage Act 2017. Check the Victorian Heritage Database, selecting 'Heritage Victoria' as the place source.*

*For further details about Heritage Overlay places, contact the relevant local council or go to Planning Schemes Online <http://planningschemes.dpcd.vic.gov.au/>*