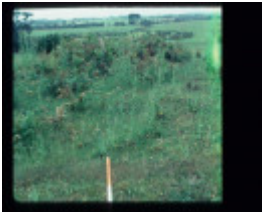

WATTLE HILL METHODIST CHAPEL, BRIDGEWATER RD, PORTLAND



WATTLE HILL METHODIST
CHAPEL, BRIDGEWATER
RD, PORTLAND

Location

PORTLAND, GLENELG SHIRE

Municipality

GLENELG SHIRE

Level of significance

Heritage Inventory Site

Heritage Inventory (HI) Number

H7221-0039

Heritage Listing

Victorian Heritage Inventory

Interpretation of
Site

Former Wattle Hill Methodist Chapel. Demolished and now vacant lot used as garden or paddock.

Archaeological Significance	Site is of archaeological significance as it has potential to provide cultural deposits dating to the period in which the chapel was built and used. Building foundations could potentially be extant also.
Historical Significance	Site is of historical significance as it relates to Portland's early history and religious community.
Hermes Number	6632
Property Number	

History

Built in 1864.

This place/object may be included in the Victorian Heritage Register pursuant to the Heritage Act 2017. Check the Victorian Heritage Database, selecting 'Heritage Victoria' as the place source.

For further details about Heritage Overlay places, contact the relevant local council or go to Planning Schemes Online <http://planningschemes.dpcd.vic.gov.au/>