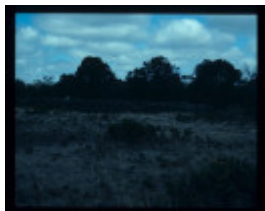
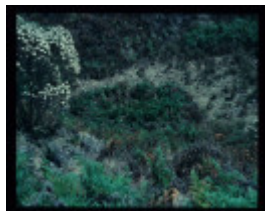


LAKE CONDAH - COMPLEX E



LAKE CONDAH - COMPLEX E



LAKE CONDAH - COMPLEX E



LAKE CONDAH - COMPLEX E



LAKE CONDAH - COMPLEX E FEATURE



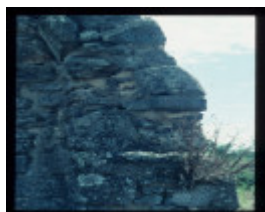
LAKE CONDAH - COMPLEX E



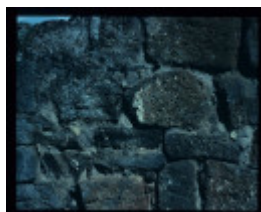
LAKE CONDAH - COMPLEX E



LAKE CONDAH - COMPLEX E FEATURE



LAKE CONDAH - COMPLEX E FEATURE



LAKE CONDAH - COMPLEX E FEATURE



LAKE CONDAH - COMPLEX E FEATURE



LAKE CONDAH - COMPLEX E FEATURE



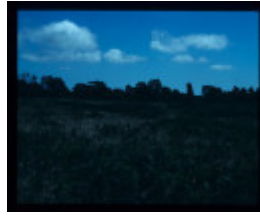
LAKE CONDAH - COMPLEX E



LAKE CONDAH - COMPLEX
E



LAKE CONDAH - COMPLEX
E FEATURE



LAKE CONDAH - COMPLEX
E



LAKE CONDAH - COMPLEX
E



LAKE CONDAH - COMPLEX
E FEATURE



LAKE CONDAH - COMPLEX
E



LAKE CONDAH - COMPLEX
E



Chimney butt and footings for
timber building in fenced
enclosure H7221-0224,
facing north west

Location

OFF LAKE CONDAH TRACK LAKE CONDAH, GLENELG SHIRE

Municipality

GLENELG SHIRE

Level of significance

Heritage Inventory Site

Heritage Inventory (HI) Number

H7221-0224

Heritage Listing

Victorian Heritage Inventory

Interpretation of Site Heritage Inventory Interpretation: Possibly an outstation of the Grafton squatting run.

Hermes Number 6672

Property Number

History

Heritage Inventory History of Site: Incoming Europeans, many from the Scottish Highlands, used the country for various activities including gathering wattle bark, cattle and sheep grazing. None placed their major homesteads on the Stones. Instead shepherds and boundary riders built rough cottages from the abundant local stone.

This place/object may be included in the Victorian Heritage Register pursuant to the Heritage Act 2017. Check the Victorian Heritage Database, selecting 'Heritage Victoria' as the place source.

For further details about Heritage Overlay places, contact the relevant local council or go to Planning Schemes Online <http://planningschemes.dpcd.vic.gov.au/>