

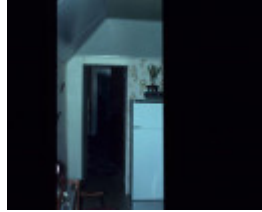
# GREAVES COTTAGE



GREAVES COTTAGE



GREAVES COTTAGE  
FEATURE



GREAVES COTTAGE  
FEATURE



GREAVES COTTAGE



GREAVES COTTAGE  
FEATURE



GREAVES COTTAGE  
FEATURE



GREAVES COTTAGE  
FEATURE



GREAVES COTTAGE  
FEATURE



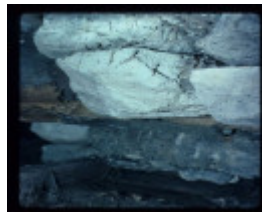
GREAVES COTTAGE  
FEATURE



GREAVES COTTAGE  
FEATURE



GREAVES COTTAGE



GREAVES COTTAGE  
FEATURE



GREAVES COTTAGE  
FEATURE



GREAVES COTTAGE  
FEATURE



GREAVES COTTAGE  
FEATURE



GREAVES COTTAGE  
FEATURE



GREAVES COTTAGE



GREAVES COTTAGE  
FEATURE



GREAVES COTTAGE



GREAVES COTTAGE



GREAVES COTTAGE  
FEATURE



GREAVES COTTAGE  
FEATURE



GREAVES COTTAGE  
FEATURE



GREAVES COTTAGE  
FEATURE



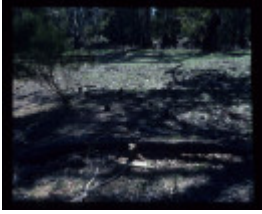
GREAVES COTTAGE



GREAVES COTTAGE



GREAVES COTTAGE



GREAVES COTTAGE

---

### **Location**

1717 PRINCES HIGHWAY ROSEBROOK, MOYNE SHIRE

### **Municipality**

MOYNE SHIRE

### **Level of significance**

Heritage Inventory Site

### **Heritage Inventory (HI) Number**

H7321-0001

### **Heritage Listing**

Victorian Heritage Inventory

---

Hermes Number 6714

Property Number

---

*This place/object may be included in the Victorian Heritage Register pursuant to the Heritage Act 2017. Check the Victorian Heritage Database, selecting 'Heritage Victoria' as the place source.*

*For further details about Heritage Overlay places, contact the relevant local council or go to Planning Schemes Online <http://planningschemes.dpcd.vic.gov.au/>*