
Acacia caerulescens



T11013 *Acacia caerulescens*



T11013 *Acacia caerulescens*



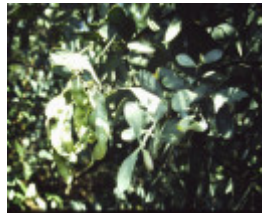
T11013 *Acacia caerulescens*



T11013 *Acacia caerulescens*



T11013 *Acacia caerulescens*



T11013 *Acacia caerulescens*

Location

Old Orbost Road,, ORBOST VIC 3888 - Property No T11013

Municipality

EAST GIPPSLAND SHIRE

Level of significance

State

Heritage Listing

National Trust

Statement of Significance

Last updated on - June 16, 2008

Rare or localised

A stand of about 50 trees bordering the Old Orbost Road and onto the hillside, extending to a few trees on private land. This stand is a large population and includes large trees, and a number of young saplings. This recently described species (1989) is endemic to eastern Victoria, in the Buchan (where it is a smaller tree) to Lakes Entrance area (Toorloo Arm). The species is ornamental and was sold in the nursery trade as Acacia 'Buchan Blue'.

Measurements: 15/10/1993

Spread (m): 9.4

Girth (m): 1.32

Height (m): 16.5

Estimated Age (yrs): 50

Condition: Good

Access: Unrestricted

Classified: 11/11/1993

Other Names Buchan Blue Wattle,

Hermes Number 70520

Property Number

This place/object may be included in the Victorian Heritage Register pursuant to the Heritage Act 2017. Check the Victorian Heritage Database, selecting 'Heritage Victoria' as the place source.

For further details about Heritage Overlay places, contact the relevant local council or go to Planning Schemes Online <http://planningschemes.dpcd.vic.gov.au/>