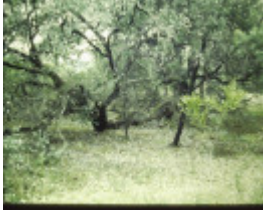


---

# Eucalyptus polyanthemos



T11270 Eucalyptus polyanthemos



T11270 Eucalyptus polyanthemos



T11270 Eucalyptus polyanthemos



T11270 Eucalyptus polyanthemos

---

## Location

Fraser National Park, , TAYLOR BAY VIC 3713 - Property No T11270

## Municipality

MURRINDINDI SHIRE

## Level of significance

Regional

## Heritage Listing

National Trust

---

## Statement of Significance

Last updated on - June 8, 2004

## Curious growth form

A most unusual form of the species, this tree is distinguished by its contorted branches forming a wide-spreading canopy that reaches ground level. The tree has one major upright trunk and three other major lateral limbs that grow along the ground in a serpentine fashion. The tree is growing on its own in a prominent location within the Park.

It is located about 50m east of the old information shelter.

Measurements: 28/07/1996

Spread (m): 26.7

Girth (m): 7.3

Height (m): 11

Estimated Age (yrs): 80

Condition: Good

Access: Unrestricted

Classified: 08/08/1996

Other Names      Red Box,

Hermes Number    70774

Property Number

---

*This place/object may be included in the Victorian Heritage Register pursuant to the Heritage Act 2017. Check the Victorian Heritage Database, selecting 'Heritage Victoria' as the place source.*

*For further details about Heritage Overlay places, contact the relevant local council or go to Planning Schemes Online <http://planningschemes.dpcd.vic.gov.au/>*