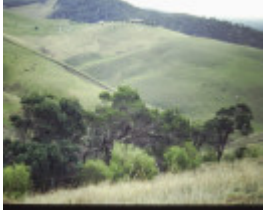
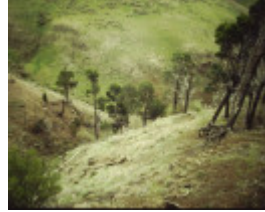


---

# Callitris glaucophylla



T11286 Callitris glaucophylla



T11286 Callitris glaucophylla



T11286 Callitris glaucophylla

---

## Location

Swans Road,, MYRNING VIC 3341 - Property No T11286

## Municipality

MOORABOOL SHIRE

## Level of significance

Regional

## Heritage Listing

National Trust

---

## Statement of Significance

Last updated on - June 16, 2008

Rare or localised

This is a disjunct community of approximately 40 mature trees with about 20 more young self-sown trees nearby. Occurring naturally in north-west Victoria and Western NSW this stand represents the southern-most occurrence of the species in Victoria. Located on a steep volcanic site, major stresses on the trees occur from overgrazing by domestic animals, rabbits and erosion.

*Callitris glaucophylla* is a fire sensitive, native conifer, frost and drought tolerant but is rarely cultivated. The wood of this species is valued for its durability, termite resistance and has been used as fencing, flooring, panelling and furniture

The stand is located on Swan Road, 2km on right hand side from intersection of Links and Robertson Roads.

Measurements: 01/06/1992  
Spread (m): 8.7  
Girth (m): 2  
Height (m): 13  
Estimated Age (yrs): 100  
Condition: Fair

Access: Restricted  
Classified: 11/06/1992

Other Names      White Cypress-Pine,

Hermes Number    70790

Property Number

---

*This place/object may be included in the Victorian Heritage Register pursuant to the Heritage Act 2017. Check the Victorian Heritage Database, selecting 'Heritage Victoria' as the place source.*

*For further details about Heritage Overlay places, contact the relevant local council or go to Planning Schemes Online <http://planningschemes.dpcd.vic.gov.au/>*