
Corymbia maculata



T11541 Corymbia maculata



T11541 Corymbia maculata



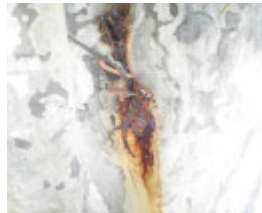
T11541 Corymbia maculata



T11541 Corymbia maculata



T11541 Corymbia maculata



T11541 Corymbia maculata



T11541 Corymbia maculata

Location

Wail Nursery Arboretum (west of township), WAIL VIC 3414 - Property No T11541

Municipality

HORSHAM RURAL CITY

Level of significance

Regional

Heritage Listing

National Trust

Statement of Significance

Last updated on - June 11, 2004

Curious Growth Form: Abnormal outgrowths

A very unusual example of this species displaying a pronounced weeping habit. The heavy weeping foliage often shears off the branches, many of which are 15cm to 20cm in diameter. The tree was planted in 1913 as part of a species trial at the Nursery, A smaller example, also displaying weeping form, occurs nearby.

Measurements: 14/07/1992

Spread (m): 19

Circumference (m): 1.96

Height (m): 18.5

Estimated Age (yrs): 80

Condition: Good

Measurements: 04/2011

Spread (m): 12.80 E-W, 13.41 N-S

Girth (m): 2.987

Height (m): 30

Estimated Age (yrs): 99

Access: Unrestricted

Classified: 12/08/1992

Other Names Spotted Gum,

Hermes Number 71039

Property Number

This place/object may be included in the Victorian Heritage Register pursuant to the Heritage Act 2017. Check the Victorian Heritage Database, selecting 'Heritage Victoria' as the place source.

For further details about Heritage Overlay places, contact the relevant local council or go to Planning Schemes Online <http://planningschemes.dpcd.vic.gov.au/>