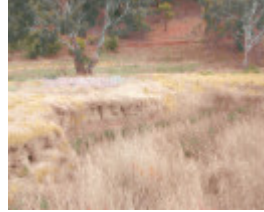

Parwan Valley



L10280 Parwan Valley



Parwan 2 better.jpg

Location

GLENMORE VIC 3340 - Property No L10280

Municipality

MOORABOOL SHIRE

Level of significance

State

Heritage Listing

National Trust

Statement of Significance

Last updated on - March 8, 2006

What is significant?

The Parwan Valley is a spectacular geomorphological landform with strong visual appeal. It was one of the first areas of settlement in Victoria, and although close to Melbourne, retains many landscape features associated with its long history as a farmed landscape.

How is it significant?

The Parwan Valley is significant for aesthetic, historic, social and scientific/technical reasons at State level.

Why is it significant?

The Parwan Valley is the only broad re-entrant valley incised into the prominent Rowsley Fault scarp that marks

the western side of the Melbourne Basin. Incision has exposed the relationship between the basalt cap and the underlying Early Tertiary sediments.

Its apparent suitability for agriculture and proximity to Melbourne led to very early colonial occupation, with most of the land subsequently sold to the squatting families. The proximity of the Melbourne market encouraged subdivision for dairy farming. But as they struggled to make a living, the dairy farmers cleared the valley floor and sides. This led to the development of spectacular and devastating soil erosion in the unstable sediments of the valley sides and, in turn, to pioneering work on erosion control by the Soil Conservation Authority of Victoria. The poor and unstable soils have restricted development, allowing many characteristics of the early farming landscape to be preserved, including some simple early farm dwellings and the Lady Northcote Children's Farm site.

Classified: 27/02/2006

Other Names Rowsley Valley, Yaloak Vale,

Hermes Number 71684

Property Number

This place/object may be included in the Victorian Heritage Register pursuant to the Heritage Act 2017. Check the Victorian Heritage Database, selecting 'Heritage Victoria' as the place source.

For further details about Heritage Overlay places, contact the relevant local council or go to Planning Schemes Online <http://planningschemes.dpcd.vic.gov.au/>