

---

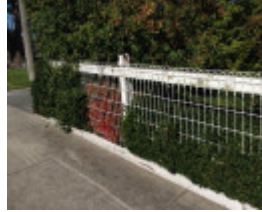
# HOUSE



House, 21 Bridge Street



House, 21 Bridge Street



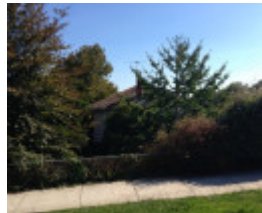
House, 21 Bridge Street



House, 21 Bridge Street



House, 21 Bridge Street



IMG\_5977.jpg



image85

---

## Location

21 BRIDGE STREET, KORUMBURRA, SOUTH GIPPSLAND SHIRE

## Municipality

SOUTH GIPPSLAND SHIRE

## Level of significance

Included in Heritage Overlay

## Heritage Overlay Numbers

HO150

# Heritage Listing

South Gippsland Shire

---

## Statement of Significance

Last updated on - December 20, 2022

### What is significant?

The house at 21 Bridge Street, Korumburra, built c. 1927, is significant. The asymmetrical Interwar timber bungalow has a hip and gable roof with unglazed terracotta tiles and a projecting gable towards Bridge St. The roof extends down along the Victoria Street elevation to form a verandah that is supported by square timber posts and partial wooden balustrades. The recessed side entrance originally held a high waisted door with Art Nouveau leadlight sidelights featuring a Kookaburra set within a circle of gum leaves. Other key features include:

- Timber shingles supported by modillions on Projecting gable and South of the verandah
- Timber, double hung, single pane sash windows, paired in the front and with one 2x2 pane window at the rear.
- Two plane brick chimneys
- Mature garden containing exotic trees and shrubs
- Early woven wire fence along Victoria Street boundary Early cyclone sire fence along Bridge Street boundary

Non-original alterations and additions, other than those specified above, are not significant.

### How is it significant?

The house at 21 Bridge Street, Korumburra is of local historic, representative, and aesthetic significance to the South Gippsland Shire. The house is also associated with the Juratowitch family.

### Why is it significant?

Historically, this house was part of the 'Bank home' scheme in the 1920's that was led by the State Savings Bank of Victoria. The program, headed by George Burrige Leith, was based on long term loans with low repayment, that were targeted at lower income workers and returned servicemen. The property owner then chose one of the standardised designs presented by the Bank, and the house was built by one of the select building contractors approved by the Bank. The aim of this program was to make home owning an affordable goal and became a symbol of achievement for a family. Up to 7,500 'Bank houses' were built in Victoria during the 1920s, most of them in the inner suburbs of Melbourne. Approximately 300 of these houses were built in regional Victoria, with bank houses built in Korumburra, Leongatha, Sale, Trafalgar and Warragul in Gippsland. 21 Bridge Street, Korumburra is highly intact and still features most of the original design elements. (Criteria A and D)

This house is the only example of a 'Type 18' design house, developed by the State Savings Bank of Victoria, within South Gippsland. Although modified slightly from the bank's design when built (the roof is extended to create a verandah on the North rather than a porch entry, there is no window hood on the projecting gable, the windows are single, rather than 4 pane upper sashed windows in the front, the windows are paired and the door is different), this is the most intact State Bank house in South Gippsland (Criterion B)

Aesthetically, this house is highly intact and has retained most of its original features as a 'Bank house'. In particular, the leadlight glass near the entrance and the use of Kookaburras demonstrate the increased use of Australian themes in house decoration during the 1920s. This Interwar bungalow also has an aesthetically significant context, with an original picturesque garden and complementary fencing that contribute to the streetscape. (Criterion E)

This house is associated with the Juratowitch and Gannon families, who were the proprietors joint and sole proprietors of the Great Southern Advocate between 1891 and 1959. The property was owned by Mary Gannon from September 1904 and passed down to her daughter Monica, who was a qualified nurse and midwife. Monica shared the property with her sister Frances and her family. Frances and Arthur Juratowitch worked at, the Advocate from 1905 and proceeded to become joint proprietors until January 1915, when Arthur took over as the sole proprietor until the close of the paper in 1959. The two families were heavily involved in the community including being part of sporting clubs, financially supporting community ventures and becoming key local identities. (Criterion H)

Heritage Study/Consultant	South Gippsland - Amendment C92 Heritage Review, David Helms Heritage Planning, 2014;
Construction dates	1927, 1927, 1927,
Architect/Designer	Leith, GB,
Other Names	-,
Hermes Number	73271
Property Number	

---

## Physical Description 1

The house, constructed c.1927, at 21 Bridge Street, Korumburra is an interwar timber bungalow, asymmetrical in plan, with a hip and gable roof clad in unglazed terracotta tiles, which extends along the north elevation to form a verandah supported on square timber posts with a weatherboard balustrade at the east end. The projecting gable has timber shingles supported by modillions, and there are timber shingles at the south end of the verandah. The recessed entry at the side contains the original high-waisted door and sidelight with Art Nouveau leadlight glass, featuring a Kookaburra set within a circle and gum leaf motifs. Windows are timber double hung sash, paired in the front elevation, and single pane except in the rear elevation where they are 'two-over-two'. There are two plain brick chimneys. The house is complemented by a mature garden containing exotic trees and shrubs and an early, possibly original, woven wire fence along the Victoria Street boundary, and an early cyclone wire fence along the Bridge Street boundary.

The house appears to be a slightly modified State Savings Bank of Victoria 'Type 18' design. The modifications to the plan include:

- The extension of the roof to create a verandah along the north elevation, rather than just a porch around the entry.
- The deletion of a window hood above the window in the projecting gable (presumably, as the window faces south-east).
- The use of single, rather than four-pane upper sashes in the windows in the front elevations.
- A paired, rather than single window to the left of the projecting gable, and an additional window in the west wall of the front room.

The house has a high degree of external intactness and integrity. A deck and verandah with access from a new door has been added at the rear, and balustrading added along the verandah.

*This place/object may be included in the Victorian Heritage Register pursuant to the Heritage Act 2017. Check the Victorian Heritage Database, selecting 'Heritage Victoria' as the place source.*

*For further details about Heritage Overlay places, contact the relevant local council or go to Planning Schemes Online <http://planningschemes.dpcd.vic.gov.au/>*