

# FORMER KELLOW FALKINER SHOWROOMS



FORMER KELLOW  
FALKINER SHOWROOMS  
SOHE 2008

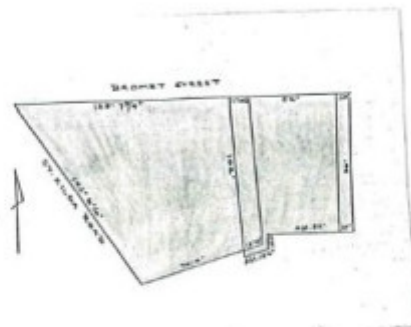



1 former kellow falkiner  
showrooms st kilda road  
melbourne front view



former kellow falkiner  
showrooms st kilda road  
melbourne street view

## EXTENT OF DESIGNATION (SUMMARY)



  
8/9/17 SOUTH YARRA  
not MELB.

H0668 kellow falkiner plan

## Location

375-385 ST KILDA ROAD MELBOURNE, MELBOURNE CITY

## Municipality

MELBOURNE CITY

## Level of significance

Registered

## Victorian Heritage Register (VHR) Number

H0668

## Heritage Overlay Numbers

HO490

## VHR Registration

December 23, 1987

## Heritage Listing

Victorian Heritage Register

---

## Statement of Significance

Last updated on - September 15, 1999

What is significant?

The Former Kellow Falkiner Showrooms were built for Charles Kellow, a pioneering Australian motorist and car salesman, in 1928. The architect for the glamorous two storey building was Harry A Norris. Constructed of structural steel, brick and concrete, the showrooms are finished with terra cotta piers, frieze, lintels, window trim and machicolations. They feature large glass display windows. The showrooms were used by Kellow Falkiner until WW2, when they were altered internally to accommodate the air force as part of the Defence Forces grouping along St Kilda Road. In 1952 the building was occupied by the State Electricity Commission and in the 1970s by the Department of Civil Aviation.

How is it significant?

The Former Kellow Falkiner Showrooms are of historical and architectural significance to the State of Victoria.

Why is it significant?

The Former Kellow Falkiner Showrooms are of historical significance for their association with the development of motoring and the motor trade in Victoria. Charles Kellow, the principal figure in the Kellow Falkiner business, was one of the first motorists in Australia and through his firm, the Kellow motor company, one of the first car distributors and dealers. Kellow established his motor retail business in 1907, and by the time this building was constructed, Kellow Falkiner was the leading agent for prestige British and American cars in Australia. The opulent and well-located showrooms reflect the company's market position and the elite nature of car ownership at the time.

The Former Kellow Falkiner Showrooms are of architectural significance as an excellent example of early, purpose-built car showrooms, as the work of Harry Norris, and for the innovative use of decorative materials in their construction.

At the time of the showrooms' construction, cars were still largely luxury items. This is reflected in the choice of the Spanish Mission style, which was the usual choice for new car showrooms and service stations in the late

1920s. It was intended to evoke some of the glamour and style of Hollywood and film stars with fast cars. The celebrated status of the Kellow Falkiner Showrooms and of their designer gave impetus to the evolution and acceptance of the Spanish Mission style in Melbourne.

The Showrooms' architect, Harry Norris, was one of the leading commercial architects in Melbourne between the wars. His practice was founded in the early twenties and spread interstate through his clients' commercial activity. He was responsible for many notable buildings, and gems of the Moderne style, including Mitchell House, the Nicholas Building and Majorca House in central Melbourne.

Norris used innovative materials in the Kellow Falkiner Showrooms. He was a pioneer in the use of Wunderlich architectural terracotta tiles in Melbourne, and this building provides a fine example of them. Wunderlich's Mission Tiles were also employed and Wunderlich was so proud of the use to which their products had been put that the building was featured in a company promotional booklet.

## Permit Exemptions

### General Exemptions:

General exemptions apply to all places and objects included in the Victorian Heritage Register (VHR). General exemptions have been designed to allow everyday activities, maintenance and changes to your property, which don't harm its cultural heritage significance, to proceed without the need to obtain approvals under the Heritage Act 2017.

Places of worship: In some circumstances, you can alter a place of worship to accommodate religious practices without a permit, but you must [notify](#) the Executive Director of Heritage Victoria before you start the works or activities at least 20 business days before the works or activities are to commence.

Subdivision/consolidation: Permit exemptions exist for some subdivisions and consolidations. If the subdivision or consolidation is in accordance with a planning permit granted under Part 4 of the *Planning and Environment Act 1987* and the application for the planning permit was referred to the Executive Director of Heritage Victoria as a determining referral authority, a permit is not required.

Specific exemptions may also apply to your registered place or object. If applicable, these are listed below. Specific exemptions are tailored to the conservation and management needs of an individual registered place or object and set out works and activities that are exempt from the requirements of a permit. Specific exemptions prevail if they conflict with general exemptions.

Find out more about heritage permit exemptions [here](#).

Construction dates	1928,
Architect/Designer	Norris, Harry A,
Heritage Act Categories	Registered place,
Other Names	RUBICON HOUSE, ROYCE HOTEL, LIBERTY MOTORS, BADENACH HOUSE,
Hermes Number	807
Property Number	

---

## History

### Contextual History:History of Place:

The Former Kellow Falkiner Showrooms were built on the site of an old Cable Car Engine House (part of the St Kilda Beach line) for a cost of over 10,000 pounds. According to the Argus (2 November 1928) the walls of the engine house, built by 1888, were retained when the showroom was built. It is likely that some of the engine house infrastructure, such as cable tunnels, pits, winding wheel pits, etc, remain under the floor. The Showrooms were lavishly decorated, as befitted the sale of prestige cars. Interestingly, though, the Melbourne City Council initially opposed the siting of the Showrooms in prestige St Kilda Road. Car showrooms, which were becoming increasingly common in the 1920s, were also subject to considerable opposition. Owners and designers were keen to improve their appearance and in this case, Harry Norris, one of the leading commercial architects of the time, was commissioned to provide an outstanding building. The interior, now much altered, must have been stunning. The ceiling of the main showroom was 27 feet high and painted to resemble hammered gold. General decoration was in old ivory picked out with blue, vermilion and orange. Electric chandeliers, a fountain, wrought iron balustrades and other features completed the Hollywood look. There was even an open air roof garden off the mezzanine floor and the offices were centrally heated. The Kellow Falkiner name derives from the partnership between the Kellow Motor Company, established in 1907, and Ralph Falkiner. Although the partnership lasted only two years from its establishment in 1913, the name persisted and the company continues to sell prestige cars in Commercial Road South Yarra. Kellow retailed his first motor car, a single cylinder de Dion in 1903. In 1910 Kellow acquired the rights for the sales and service of Rolls-Royce motor car chassis in Victoria, a connection which the firm has maintained. Kellow was a personal friend of Royce.

## Extent of Registration

### AMENDMENT OF REGISTER OF HISTORIC BUILDINGS

Historic Building No. 668

Former Kellow Falkiner Showrooms 279 St. Kilda Road, Melbourne, to the extent of the whole of the building and the whole of the land as described in Certificate of Title (Volume 1731 Folio 088 and Volume 5216 Folio 125).  
[Victoria Government Gazette No. G50 23 December 1987 pp. 3494-3495]

*This place/object may be included in the Victorian Heritage Register pursuant to the Heritage Act 2017. Check the Victorian Heritage Database, selecting 'Heritage Victoria' as the place source.*

*For further details about Heritage Overlay places, contact the relevant local council or go to Planning Schemes Online <http://planningschemes.dpcd.vic.gov.au/>*