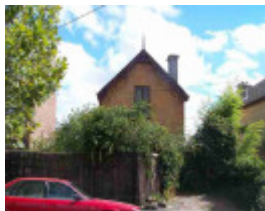

Houses



39 Nicholson Street



39 Nicholson Street



39 Nicholson Street



39-41 Nicholson Street.JPG

Location

39 Nicholson Street, ABBOTSFORD VIC 3067 - Property No 107230

Municipality

YARRA CITY

Level of significance

Registered

Victorian Heritage Register (VHR) Number

H0142

Heritage Overlay Numbers

HO38

Heritage Listing

Yarra City

Statement of Significance

Last updated on - September 6, 2008

This property is on the Victorian Heritage Register - H142.

For more information on this property, refer to the Victorian Heritage Register information.

Heritage Study/Consultant	Yarra - City of Collingwood Conservation Study, Andrew Ward & Associates, 1989; Yarra - City of Collingwood Conservation Study, Andrew Ward & Associates, 1995; Yarra - City of Yarra Heritage Review, Allom Lovell & Associates, 1998; Yarra - City of Yarra Review of Heritage Overlay Areas, Graeme Butler & Associates, 2007;
Construction dates	1858,
Hermes Number	101649
Property Number	

Physical Description 1

The houses at 39-41 Nicholson Street, Abbotsford, are two identical one-and-a-half-storey detached single-fronted residences, constructed of coursed bluestone with gabled slate roofs. The street elevations have been rendered. The gable ends facing the street have decorative carved bargeboards and finials. Windows are single-paned double-hung sashes with bluestone sills, and chimneys are rendered with corbelled caps. The side elevations have unusual multi-paned bay windows rising to two storeys, lighting the stair wells, with barrel-vaulted corrugated iron roofs.

Alterations to the houses include the replacement of the first floor sash window with a casement window at No. 41, and removal of the gable finial, recladding of the barrel-vaulted stairwell bay window and painting of the bluestone side elevations at No. 39. Neither of the houses has a front fence.

Integrity

not assessed

This place/object may be included in the Victorian Heritage Register pursuant to the Heritage Act 2017. Check the Victorian Heritage Database, selecting 'Heritage Victoria' as the place source.

For further details about Heritage Overlay places, contact the relevant local council or go to Planning Schemes Online <http://planningschemes.dpcd.vic.gov.au/>