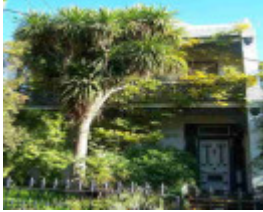

HOUSE (ENFIELD)



Enfield



Enfield



Enfield

Location

144 BURNLEY STREET,, RICHMOND VIC 3121 - Property No 203875

Municipality

YARRA CITY

Level of significance

Incl in HO area indiv sig

Heritage Overlay Numbers

HO234

Heritage Listing

Yarra City

Statement of Significance

Last updated on - January 1, 2008

The following wording is from the Allom and Lovell Building Citation, 1998 for the property. Please note that this is a "Building Citation", not a "Statement of Significance". For further information refer to the Building Citation held by the City of Yarra.

History:

Enfield was built in 1901 by David Mitchell, prolific Melbourne builder who was also responsible for the construction of the Royal Exhibition Building. It is claimed that Dame Nellie Melba, Mitchell's daughter, lived in the house for a period before it was sold to Mitchell's accountant. In 1920 the house passed to David Fitton who remained there until 1962.

Description:

Enfield is a two-storey single-fronted freestanding Italianate style brick house, with a projecting rear wing to the north. The front verandah and balcony have cast iron lacework friezes, and the balcony has lacework balustrading with a fern motif. The verandah and balcony are flanked by projecting brick walls with blind arches. The ground floor facade has tripartite timber-framed double-hung sash windows, whilst the first floor has two double-hung sash windows and a pair of leadlight French doors. The front door has unusual arched glazed panels, and glazed side- and highlights. The hipped roof is concealed behind a rendered parapet, which has a central triangular pediment flanked by curved, vermiculated panels. There is a single rendered brick chimney with a moulded capital and terracotta chimney pots.

The external walls of the house have been painted white; the ground floor facade appears to have been rendered.

The house retains an original iron picket front fence.

Significance:

Enfield, at 144 Burnley Street, Richmond, is of local historical and architectural significance. It was built by David Mitchell and was purportedly for a time the home of his daughter, Dame Nellie Melba, who was born in Burnley Street and whose family has many associations with the northeast of Richmond. Architecturally, the house is a typical example of a large, Italianate house with a terrace form, located on a prominent site in an area which was mainly developed with smaller cottages and terraces.

Heritage Study/Consultant	Yarra - Richmond Conservation Study, John & Thurley O'Connor, Ros Coleman & Heather Wright, 1985; Yarra - City of Yarra Heritage Review, Allom Lovell & Associates, 1998; Yarra - City of Yarra Review of Heritage Overlay Areas, Graeme Butler & Associates, 2007;
Construction dates	1901,
Other Names	Mitchell House,
Hermes Number	103268
Property Number	

Physical Description 2

significant planting?

Physical Description 1

Enfield is a two-storey single-fronted freestanding Italianate style brick house, with a projecting rear wing to the north. The front verandah and balcony have cast iron lacework friezes, and the balcony has lacework balustrading with a fern motif. The verandah and balcony are flanked by projecting brick walls with blind arches. The ground floor facade has tripartite timber-framed double-hung sash windows, whilst the first floor has two double-hung sash windows and a pair of leadlight French doors. The front door has unusual arched glazed panels, and glazed side- and highlights. The hipped roof is concealed behind a rendered parapet, which has a

central triangular pediment flanked by curved, vermiculated panels. There is a single rendered brick chimney with a moulded capital and terracotta chimney pots.

The external walls of the house have been painted white; the ground floor facade appears to have been rendered.

The house retains an original iron picket front fence.

Integrity

not assessed

This place/object may be included in the Victorian Heritage Register pursuant to the Heritage Act 2017. Check the Victorian Heritage Database, selecting 'Heritage Victoria' as the place source.

For further details about Heritage Overlay places, contact the relevant local council or go to Planning Schemes Online <http://planningschemes.dpcd.vic.gov.au/>