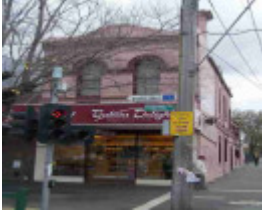

330 Queens Parade



fitzroy north queens parade
fitzroy north queens parade
330



Rear of 330 Queens
Parade.JPG

Location

330 Queens Parade, FITZROY NORTH VIC 3065 - Property No 248140

Municipality

YARRA CITY

Level of significance

Incl in HO area contributory

Heritage Overlay Numbers

HO330

Heritage Listing

Yarra City

Statement of Significance

Last updated on - January 1, 2014

Precinct statement of significance

Component streets include:

Brennand Street,

Dummett Crescent,

Queens Parade,

Rushall Crescent.

Statement of Significance

What is significant?

Prior to 1850, Queens Parade was a track that linked Melbourne to Heidelberg in the east and forked northwards to link to Northcote and the Plenty River district. The road was surveyed by Hoddle as a three chain wide boulevard and reserved in 1853. It was known as the Heidelberg Road, and the northern fork as the Plenty Road until renamed in the early 1900s. Queens Parade formed part of the boundary between Clifton Hill and North Fitzroy. These two government surveyed localities were to the north of the largely privately surveyed and developed South Fitzroy and Collingwood areas and south of the government surveyed agricultural subdivisions in the Brunswick and Northcote areas.

The earliest development in the Heritage Overlay Area is in that part of the former 1850s Northcote township reserve that is located in the City of Yarra. The Scotch Thistle, later Terminus Hotel, 492 Queens Parade was built by 1854 on the old town reserve to service travellers at the Merri Creek crossing. Some early bluestone terrace houses (1857) remain at 438 Queens Parade, on the corner of Rushall Crescent.

When the East Collingwood Council formed in 1855, Smith, Wellington and Hoddle Streets were extended north to the Queens Parade reserve to make the area more accessible. Lots on Queen's Parade sold from 1865 to 1869 but it remained largely undeveloped until after 1875 with Daintons Family Hotel (now the Normanby Hotel) and the commencement of building work on the St. John's Roman Catholic Church complex in 1876.

Cable tram service commenced in 1887 with terminus and tram sheds adjacent to the Terminus Hotel at the Merri Creek (see 492 Queens Parade). In 1888, the Royal Park to Clifton Hill railway opened and in 1889, the cable tram route was extended to Northcote with people having to dismount and change trams at the Merri Creek terminus.

On the south side of Queens Parade, Clifton Hill was rapidly filling out in the Boom years but building proceeded at a slower pace on the North Fitzroy side. However North Fitzroy's Queen's Parade frontage contained a greater supply of subdivided land for sale and developed extensively with shops during the late 1880s and 1890s.

By the early 1890s, the Clifton Hill side of Queen's Parade included the Normanby Hotel (139 Queens Parade), the 1889 Melbourne Saving Bank (99 Queens Parade) and the 1884 Clifton Hill Hotel (89 Queens Parade). The Fitzroy North side, leading to the Northcote tram terminus had the 1886 National Bank of Australasia (270 Queens Parade), the 1889 former London Chartered Bank (370 Queens Parade) and the 1854 Scotch Thistle Hotel (492 Queens Parade, renamed the Terminus Hotel). The spectacular United Kingdom Hotel (HO92 established 1880, rebuilt 1938), situated at the intersection of the Heidelberg and Plenty Roads, was uniquely positioned to attract trade from all directions.

The Great Depression of the 1890s halted the spread of commercial development in Queens Parade until Federation when substantial commercial buildings began to replace earlier development on both sides. The MMBW Detail Plans from around 1900 show this commercial strip development and that street verandahs lined both sides of the street, with street trees also shown. Many of these verandahs survive.

Landscaped sections of Queen's Parade evolved in the 19th century and after WW1, with grassed median strips planted with planes and elms at the west end (see HO93). Towards the east end, a triangular garden had been created at the junction of the former Plenty Road and Heidelberg Road: (90) a significant Holm oak (*Quercus illex*) is planted in this reserve (91). On the opposite side of Queens Parade, detached houses in garden settings were built by the 1920s while, further towards Northcote, a group of significant Edwardian houses was established near the tram terminus.

Main development period

The Queens Parade Heritage Overlay Area main development period is that of the Victorian-era and Edwardian-eras, with a contribution from well preserved inter-war buildings and individually significant places of all eras.

Contributory elements

Contributory elements include (but not exclusively) generally attached Victorian and Edwardian-era mainly two-storey shops and residences or commercial buildings, having:

- . Facade parapets, with pitched roofs behind;
- . Two storey wall heights;
- . Face brick (red, bichrome and polychrome) or stucco walls;
- . Corrugated iron roof cladding, with some slate roofing, usually concealed from Queens Parade;
- . Chimneys of either stucco finish (with moulded caps) or of matching face brickwork with corbelled capping courses;
- . Post-supported street verandahs as shown on the MMBW Detail Plans (92),
- . Less than 40% of the street upper wall face comprised with openings such as windows; and
- . No front or side setbacks; also
- . Display windows mounted on plinths and entry recesses at ground floor.

Contributory elements also include residential buildings from Victorian and Edwardian-eras with typically:

- . Expressed steeply pitched gabled or hipped roofs,
- . One storey wall heights but with some attic storey houses,
- . Face brick (red, dichrome and polychrome), or stucco walls;
- . Corrugated iron roofing, unglazed Marseilles pattern terra-cotta tiles, with some slate;
- . Chimneys of either stucco finish (with moulded caps) or of face brickwork with corbelled capping courses;
- . Post-supported verandah elements facing the street;
- . Less than 40% of the street wall face comprised with openings such as windows and doors; and
- . Front gardens, originally bordered by typically timber picket front fences of around 1m height;

Contributory elements also include:

- . Detached inter-war houses in their garden settings, particularly to the north-east end of the area;
- . Landmark religious building groups;
- . Well preserved buildings from the pre Second War era;
- . Individually significant buildings from all eras;
- . Public infrastructure, expressive of the Victorian and Edwardian-eras such as bluestone pitched road paving, crossings, stone kerbs, and channels, and asphalt paved footpaths; and
- . a wide boulevard character, with associated landscape and view lines to major early building complexes, such as the St. John's Catholic Church group.

How is it significant?

HO330 Queens Parade Heritage Overlay Area, Nth Fitzroy/Clifton Hill is **aesthetically and historically** significant to the City of Yarra (National Estate Register [NER] Criteria E1, A4)

Why is it significant?

The Queens Parade Heritage Overlay Area is significant:

- . As one of Melbourne's early surveyed boulevards (1853) and one of the few associated with the prominent surveyor Robert Hoddle, enhanced by mature street trees (elms) and extensive beautification in the inter-war period in the form of plane trees and rockeries;
- . For the contribution of the old government surveyed town of Northcote (part), as a valuable historical depiction of Melbourne's early relationship to then nearby country districts, with early extant buildings such as the Terminus Hotel at the Merri Creek bridge (in use since 1854), substantial 1860s row houses and other indications of residential development prior to the government suburban subdivisions and their development in the 1880s Boom era;
- . For the late 19th and early 20th century shops, hotels, banks, and public buildings, often with intact street verandahs, lining both sides of a wide boulevard that provides for exceptional vistas to fine commercial rows, and demonstrates the major role of Queens Parade as a commercial, banking, accommodation and public transport nucleus for the district;
- . As a good representation of building styles from the mid-19th century to the late 1930s, enhanced by prominent landmarks such as the former banks, St. John's Catholic Church complex, and the United Kingdom Hotel, the latter two being primary foci in the precinct;
- . For the remarkable collection of original street verandahs particularly on the north side of the street;
- . For the picturesque shop-row skyline, visible from across Queens Parade, with its gabled or hipped roof forms and many original chimneys; and
- . For fine groups of early 20th century villas, set in gardens, in the residential areas to the west and north-east ends of Queens Parade.

References

90 see Parish plan put-away 1871: shows fenced reserve

91 see National Trust of Australia (Vic) FN T11503

92 See MMBW Detail Plan 1196 of 1899

Heritage Study/Consultant	Yarra - North Fitzroy Conservation Study, Jacobs Lewis Vines, 1978; Yarra - Fitzroy Urban Conservation Study, Allom Lovell & Associates, 1992; Yarra - City of Yarra Heritage Review, Allom Lovell & Associates, 1998; Yarra - City of Yarra Review of Heritage Overlay Areas, Graeme Butler & Associates, 2007;
Construction dates	1870,
Other Names	Shop & Residence,
Hermes Number	103332
Property Number	

Physical Description 2

ground level changed; corner site; MMBW Detail Plan shows

Integrity

Fair

This place/object may be included in the Victorian Heritage Register pursuant to the Heritage Act 2017. Check the Victorian Heritage Database, selecting 'Heritage Victoria' as the place source.

For further details about Heritage Overlay places, contact the relevant local council or go to Planning Schemes Online <http://planningschemes.dpcd.vic.gov.au/>