

ALISTAIR KNOX PARK, N.W. CNR. BRIDGE STREET, MAIN ROAD



209 - Alistair Knox Park Main Rd Eltham - Photograph shows the prominently located park sign with low planting and rockwork in the foreground - Shire of Eltham Heritage Study 1992



209 - Alistair Knox Park Main Rd Eltham 02 - Photograph illustrates natural form of lake and surrounding planting - - Shire of Eltham Heritage Study 1992



209 - Alistair Knox Park Main Rd Eltham 03 - Photograph illustrates natural form of lake and surrounding planting - - Shire of Eltham Heritage Study 1992



209 - Alistair Knox Park Main Rd Eltham 04 - Photograph shows rocks installed around lake edge important landscape feature - Shire of Eltham Heritage Study 1992



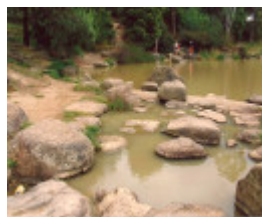
209 - Alistair Knox Park Main Rd Eltham 05 - Old photograph showing the Main Rd frontage (right hand side) of what is now the park (early 20th century?) (ELHPC No. 615) - Shire of Eltham Heritage Study 1992



209 - Alistair Knox Park Main Rd Eltham 06 - Central Park in the 1920s or 1930s (ELHPC No. 684) - Shire of Eltham Heritage Study 1992



Alistair Knox Park Main Rd Eltham Colour 1 - Shire of Eltham Heritage Study 1992



Alistair Knox Park Main Rd Eltham Colour 2 - Shire of Eltham Heritage Study 1992



Alistair Knox Park Main Rd Eltham Colour 3 - Shire of Eltham Heritage Study 1992



Alistair Knox Park Main Rd Eltham
Colour 4 - Shire of Eltham Heritage
Study 1992

Location

BRIDGE STREET CNR MAIN ROAD ELTHAM, NILLUMBIK SHIRE

Municipality

NILLUMBIK SHIRE

Level of significance

Included in Heritage Overlay

Heritage Overlay Numbers

HO14

Heritage Listing

Nillumbik Shire

Statement of Significance

Last updated on - January 5, 2010

REVISED STATEMENT OF SIGNIFICANCE, CONTEXT, 2010

What is significant?

The entire 1971 Alistair Knox Park (including the lake) to the title boundaries.

How is it significant?

The Alistair Knox Park and the lake are historically, aesthetically and socially significant to the Shire of Nillumbik.

Why is it significant?

The park and the lake are historically significant because they were designed by four of the major forces in the urban bush landscape movement: Gordon Ford, Peter Glass, Alistair Knox and Ivan Stranger (Criterion H). The park is historically and aesthetically significant because it contains a number of features that are associated with the urban bush landscape movement - these include the informal planting of Australian native species in an open and undulating grassed setting and the attempt to blend the man-made landscape of the park with the natural environs of the Diamond Creek to the park's west (Criteria A & E). The lake has also been carefully designed to integrate with the park; its perimeter, constructed from a set of large, flattish stones, is characteristic of other designs by members of the urban bush landscape movement (Criteria A, D & E). Socially, the park is now a vital

part of Eltham's urban fabric and contributes to the quality of life in the central area of the township (Criterion G).

Heritage Study/Consultant	Nillumbik - Shire of Eltham Heritage Study, David Bick, 1992;
Construction dates	1970,
Hermes Number	104278
Property Number	

Historical Australian Themes

CHARACTERISTIC LANDSCAPE FEATURES

PUBLIC PLANTING

SUBURBAN DEVELOPMENT

THE ROLE OF LOCAL GOVERNMENT

8.1.3 Developing public parks and gardens

Physical Description 1

The park is overlooked by steep hills rising to both the east and the west of the site and these forms a valley about half a mile wide. The planting of the park was extensively native vegetation, though not entirely indigenous, and this blends the park with its surroundings. The park covers 6 hectares and contains open lawns, ponds, paths and tree and shrub massing. The ponds are on two levels and edged by rounded boulders. A cascade flows between these levels. Plantings are typical native shrub and tree massings of the type established in the bush style garden. These masses offer an effective contrast to the flowing spaces between them.

This place/object may be included in the Victorian Heritage Register pursuant to the Heritage Act 2017. Check the Victorian Heritage Database, selecting 'Heritage Victoria' as the place source.

For further details about Heritage Overlay places, contact the relevant local council or go to Planning Schemes Online <http://planningschemes.dpcd.vic.gov.au/>