

Former Presbyterian Manse



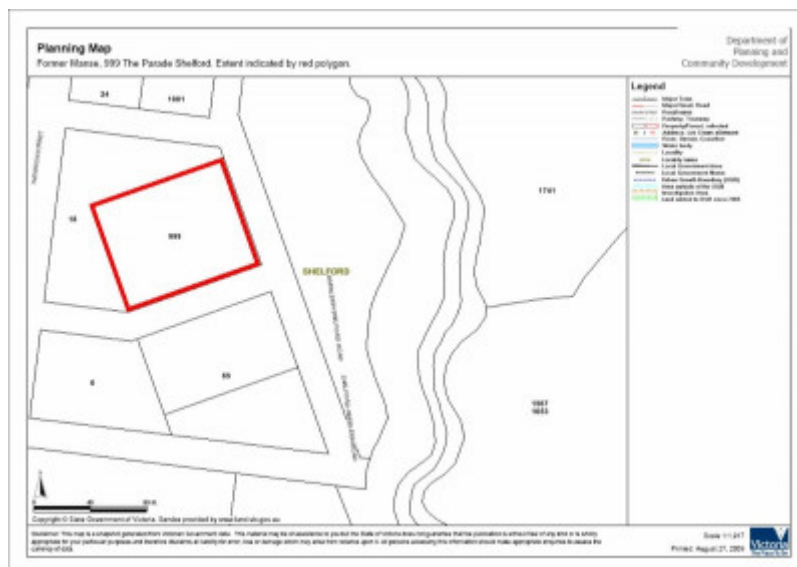
Former Presbyterian Manse,
999 The Parade, Shelford



Former Presbyterian Manse,
999 The Parade, Shelford



Former Presbyterian Manse,
999 The Parade, Shelford



Extent of registration map

Location

999 Inverleigh-Shelford SHELFORD, GOLDEN PLAINS SHIRE

Municipality

GOLDEN PLAINS SHIRE

Level of significance

Included in Heritage Overlay

Heritage Overlay Numbers

Heritage Listing

Golden Plains Shire

Statement of Significance

Last updated on -

What is Significant?

The cottage at 999 The Parade, Shelford (formerly The Leigh) was built on land once permanently reserved for the Free Presbyterian Church and it appears to have been the first Presbyterian manse. The first Minister, Rev. Alexander Simpson arrived in 1856. The Leigh Presbyterian Church was built in 1859 but on another parcel of land, on the main road, donated by the squatter, George Russell of Golf Hill and is positioned at the entrance to his homestead. Russell was one of the most successful, important and influential squatters in Victoria, and a natural leader of the Scottish Presbyterians who had settled the Western District. Simpson went on to become the Moderator of the General Assembly of the Presbyterian Church of Victoria. A new manse was built higher on the same hillside in 1871, where Simpson lived until his death in 1883. The cottage was the home of Peter and Harriet Bath and family for over forty years until the early 1970s. The single-storey brick cottage is vernacular in style although with an interesting 'frieze' in brickwork at the eaves line. There is an attic storey in the roof and a substantial skillion at the rear. A later timber skillion may date from after 1971. The cottage remains intact, has a high degree of integrity and is in good condition.

How is it Significant?

The cottage at 999 The Parade, Shelford is of historic and architectural significance to the Golden Plains Shire.

Why is it Significant?

The cottage is of historic significance as the first Presbyterian manse in Shelford. It has direct historical associations with two of the most important Presbyterians in colonial Victoria, George Russell and the Rev. Alexander Simpson. It has further historical associations with the Bath family. The cottage is of architectural significance for its early vernacular form and use of materials.

Heritage Study/Consultant	Golden Plains - Golden Plains Shire Heritage Study Phase 2, Heritage Matters P/L, 2009;
Hermes Number	104356
Property Number	

Historical Australian Themes

The Australian Heritage Commission devised the Australian Historic Themes in 2001. The following themes have influenced the historical development of the ...

8 Developing Australia's Cultural Life

8.6.2 Maintaining religious traditions and ceremonies

8.12 Living in and around Australian homes

8.14 Living in the county and rural settlements

Intactness

The cottage is completely intact.

Integrity

The cottage retains a very high degree of integrity.

Physical Description 1

The cottage is located on the southern side of the township of Rokewood, on an elevated site overlooking the Leigh River. It is positioned on the south-east boundary of the allotment. It is symmetrical and single-storey with an attic. The face brickwork, now painted, is laid in alternating rows of headers and stretchers. The brick walls of the gable ends and the chimneys in the gables rise above the corrugated iron roof (possibly the original iron). A detail of 'dog-tooth' bricks supporting three courses creates a notional frieze at the eaves level. The four-panel front door is glazed in the upper two panels and has a fanlight subdivided into rectangles above. The front windows are twelve-paned double-hung sashes and the square windows of the attic, positioned either side of the chimney flue, are six-paned. There is a wide elevated verandah, possibly constructed later, with a simple palisade balustrade. A substantial skillion extends across the whole of the rear, continuing the main roof line with a secondary skillion, with a separately pitched roof, beyond that. The building is substantially intact, retains a high degree of integrity and is in good condition.

Physical Description 2

Extent of Registration: The whole of the cottage, but excluding the interiors, and all of the land being Allotment 8 of Section 11 of the Township of Shelford.

Extent of Registration

The whole of the cottage, but excluding the interiors, and all of the land being Allotment 8 of Section 11 of the Township of Shelford.

This place/object may be included in the Victorian Heritage Register pursuant to the Heritage Act 2017. Check the Victorian Heritage Database, selecting 'Heritage Victoria' as the place source.

For further details about Heritage Overlay places, contact the relevant local council or go to Planning Schemes Online <http://planningschemes.dpcd.vic.gov.au/>