

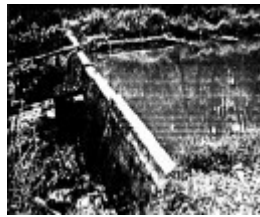
STATE BATTERY REMAINS INCLUDING THE CONCRETE DAM IN SMITHS GULLY CREEK, PETER FRANKE RESERVE, SMITHS GULLY RD, SMITHS GULLY



264 - State Battery Remans Smiths Gully - Shire of Eltham Heritage Study 1992



264 - State Battery Remans Smiths Gully 02 - Opening of the Queenstown circa 1910; it was burnt down in the 1962 bushfires and the dam and some machinery bases are all that survive - the photograph on the first page of this evaluation shows the same view



264 - State Battery Remans Smiths Gully 03 - Shire of Eltham Heritage Study 1992



264 - State Battery Remans Smiths Gully 04 - Shire of Eltham Heritage Study 1992



264 - State Battery Remans Smiths Gully 05 - Shire of Eltham Heritage Study 1992



State Battery Remans Smiths Gully Black & White - Shire of Eltham Heritage Study 1992



State Battery Remans Smiths Gully Colour 3 - Shire of Eltham Heritage Study 1992



HO164 remains.jpg



State Battery Remans Smiths Gully Colour 1 - Shire of Eltham Heritage Study 1992



State Battery Remans Smiths
Gully Colour 4 - Shire of
Eltham Heritage Study 1992

Location

75 SMITHS GULLY RD SMITHS GULLY, NILLUMBIK SHIRE

Municipality

NILLUMBIK SHIRE

Level of significance

Included in Heritage Overlay

Heritage Overlay Numbers

HO164

Heritage Listing

Nillumbik Shire

Statement of Significance

Last updated on - January 7, 2010

REVISED STATEMENT OF SIGNIFICANCE, CONTEXT, 2010

What is significant?

The remains of the c1920 State battery, the machinery block remains, the concrete dam and the site to a radius of 100 metres.

How is it significant?

The state battery is historically and archaeologically significant to the Shire of Nillumbik.

Why is it significant?

The battery is historically significant as a reminder of the role that gold played in the life and development of St Andrews and the surrounding area, well in to the 20th century (Criterion A). The battery is archaeologically significant because, while the site has been re-vegetated and some of the remains are now hidden, archaeological analysis has the capacity to reveal further information about its past (Criterion C). The significance of the site is enhanced by its proximity to the Queenstown Cemetery- HO163.

BICK STUDY, 1992

The State Battery was the central component in the gold mining of this area from circa the 1920s. The battery crushed the gold bearing quartz extracted from the mines and was a sizable weatherboard building enclosing the engine and stampers. All that now remains are the bases for the machinery that comprised the battery, one timber and a couple of concrete bases and the nearby dam, which supplied water. However the historic significance of the site remains and is enhanced by the Queenstown Cemetery on the other side of Smiths Gully Road (SEE HERMES NO.104515)

BASIS OF SIGNIFICANCE:

ILLUSTRATION OF THE THEMES

HISTORY

DEGREE OF SIGNIFICANCE: LOCAL SIGNIFICANCE

EXTENT OF SIGNIFICANCE: MACHINERY BLOCK REMAINS, CONCRETE DAM AND SITE TO A RADIUS OF 100 METRES.

| | |
|---------------------------|---|
| Heritage Study/Consultant | Nillumbik - Shire of Eltham Heritage Study, David Bick, 1992; |
| Construction dates | 1920, |
| Other Names | PETER FRANKE RESERVE, SMITHS GULLY RD, SMITHS GULLY, |
| Hermes Number | 104516 |
| Property Number | |

Historical Australian Themes

GOLD MINING

3.3.3 Prospecting for precious metals

3.4.3 Mining

Physical Description 1

The surviving remains are the concrete dam and the bases of machinery nearby. The site has since re-vegetated and there may be other remains on and below the surface that are not apparent.

Usage/Former Usage

Original Use: Gold Mining Battery (crushing the ore)

Present Use: Completely demolished apart from the dam and some machinery bases

This place/object may be included in the Victorian Heritage Register pursuant to the Heritage Act 2017. Check the Victorian Heritage Database, selecting 'Heritage Victoria' as the place source.

For further details about Heritage Overlay places, contact the relevant local council or go to Planning Schemes Online <http://planningschemes.dpcd.vic.gov.au/>