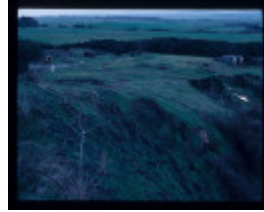
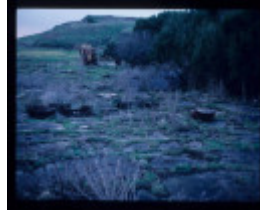

WONTHAGGI - WESTERN AREA



WONTHAGGI - WESTERN AREA



WONTHAGGI - WESTERN AREA



WONTHAGGI - WESTERN AREA



WONTHAGGI - WESTERN AREA



WONTHAGGI - WESTERN AREA



WONTHAGGI - WESTERN AREA

Location

LOWER POWLETT ROAD WONTHAGGI, BASS COAST SHIRE

Municipality

BASS COAST SHIRE

Level of significance

Heritage Inventory Site

Heritage Inventory (HI) Number

H8020-0007

Heritage Listing

Victorian Heritage Inventory

Interpretation of Site Heritage Inventory Interpretation: Remnants of the mining operations around the main shaft for working the western area of the Dudley Basin.

Hermes Number 10544

Property Number

History

Heritage Inventory History of Site: The main shaft was sunk in 1936 and work ceased in 1968.

This place/object may be included in the Victorian Heritage Register pursuant to the Heritage Act 2017. Check the Victorian Heritage Database, selecting 'Heritage Victoria' as the place source.

For further details about Heritage Overlay places, contact the relevant local council or go to Planning Schemes Online <http://planningschemes.dpcd.vic.gov.au/>