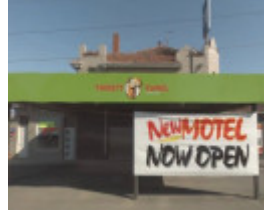


---

## Guiding Star Hotel



1759 - Brimbank City Council  
Post-contact Cultural  
Heritage Study 1999



Guiding Star.jpg



HO81 Guiding Star Hotel  
1.JPG



Site 075 - Guiding Star Hotel  
(2).jpg



Site 075 - Guiding Star  
Hotel.jpg

---

### Location

700 Geelong Road, BROOKLYN VIC 3012 - Property No 75

### Municipality

BRIMBANK CITY

### Level of significance

Included in Heritage Overlay

### Heritage Overlay Numbers

HO81

### Heritage Listing

Brimbank City

---

## Statement of Significance

Last updated on - January 1, 1999

### Statement of Significance

The Guiding Star Hotel is of local historical and architectural significance as a relatively large and elaborate hotel built to serve the arterial traffic of the Geelong Road, and the industrial activities in the Brooklyn area, and in particular the transport companies and bluestone quarries.

Heritage Study/Consultant	Brimbank - Brimbank City Council Post-contact Cultural Heritage Study, G. Vines, 2000; Brimbank - Melbourne Western Region Industrial Heritage Study, G. Vines & A. Ward, 1989;
Construction dates	1925,
Hermes Number	106099
Property Number	

---

## Physical Description 1

### Description

A Spanish Mission style, stuccoed, two-storey hotel, with Cordova tiles to a hipped roof and eaves broken by projecting parapets above the two side entries and the main corner entry. The last features a developed moulded parapet with angled tiles. Wrought iron balconettes are fitted to the upper semicircular arched windows above each entrance. Unadorned square brick chimneys project high from behind the roof line. The prominent corner site is compromised by lack of landscaping and extensive unformed gravel parking areas.

## Physical Conditions

### Condition/integrity

In fair condition although the balconettes have been removed and the gravel car park surrounds of the building are very unattractive.

## Historical Australian Themes

8 Developing Australia's cultural life  
8.4 Eating and drinking

*This place/object may be included in the Victorian Heritage Register pursuant to the Heritage Act 2017. Check the Victorian Heritage Database, selecting 'Heritage Victoria' as the place source.*

*For further details about Heritage Overlay places, contact the relevant local council or go to Planning Schemes Online <http://planningschemes.dpcd.vic.gov.au/>*