

INGRAM'S SKYLINE



INGRAM'S SKYLINE



INGRAM'S SKYLINE



INGRAM'S SKYLINE



INGRAM'S SKYLINE



INGRAM'S SKYLINE



INGRAM'S SKYLINE



INGRAM'S SKYLINE



INGRAM'S SKYLINE



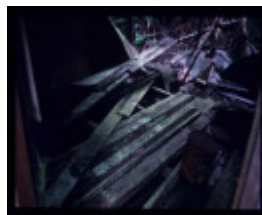
INGRAM'S SKYLINE



INGRAM'S SKYLINE



INGRAM'S SKYLINE



INGRAM'S SKYLINE



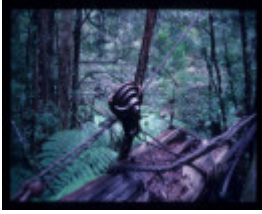
INGRAM'S SKYLINE



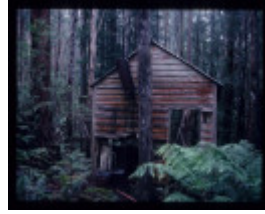
INGRAM'S SKYLINE



INGRAM'S SKYLINE



INGRAM'S SKYLINE



INGRAM'S SKYLINE



INGRAM'S SKYLINE



INGRAM'S SKYLINE



INGRAM'S SKYLINE



INGRAM'S SKYLINE



INGRAM'S SKYLINE

Location

SOUTH FACE ROAD AND GROWLERS CREEK TRACK TANJIL, BAW BAW SHIRE

Municipality

BAW BAW SHIRE

Level of significance

Heritage Inventory Site

Heritage Inventory (HI) Number

H8122-0050

Heritage Listing

Victorian Heritage Inventory

Hermes Number 10761

Property Number

History

Heritage Inventory History of Site: The skyline was used in the mid 1940s to bring logs to the tramline where a Fordson rail tractor hauled the trucks to the top of the incline. Once lowered down the incline the logs were hauled to Ingrams Mill. Road trucks took over this section after 1949.

This place/object may be included in the Victorian Heritage Register pursuant to the Heritage Act 2017. Check the Victorian Heritage Database, selecting 'Heritage Victoria' as the place source.

For further details about Heritage Overlay places, contact the relevant local council or go to Planning Schemes Online <http://planningschemes.dpcd.vic.gov.au/>