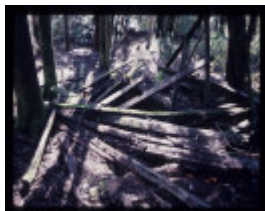
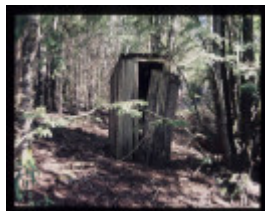

ALSTERGREN'S SAWMILL



ALSTERGREN'S SAWMILL



ALSTERGREN'S SAWMILL



ALSTERGREN'S SAWMILL



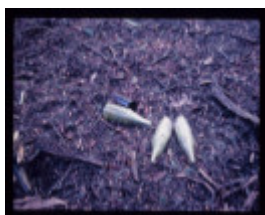
ALSTERGREN'S SAWMILL



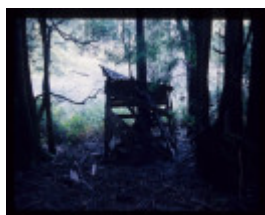
ALSTERGREN'S SAWMILL



ALSTERGREN'S SAWMILL



ALSTERGREN'S SAWMILL



ALSTERGREN'S SAWMILL



ALSTERGREN'S SAWMILL



ALSTERGREN'S SAWMILL



ALSTERGREN'S SAWMILL

Location

THOMSON VALLEY ROAD BAW BAW, BAW BAW SHIRE

Municipality

BAW BAW SHIRE

Level of significance

Heritage Inventory Site

Heritage Inventory (HI) Number

H8122-0055

Heritage Listing

Victorian Heritage Inventory

Hermes Number 10766

Property Number

History

Heritage Inventory History of Site: Alstergren's Pty Ltd established this mill on Bell Creek in the 1940s. It connected with the Forest Commission section of the Thomson Valley Tramway via a steeply graded incline.

This place/object may be included in the Victorian Heritage Register pursuant to the Heritage Act 2017. Check the Victorian Heritage Database, selecting 'Heritage Victoria' as the place source.

For further details about Heritage Overlay places, contact the relevant local council or go to Planning Schemes Online <http://planningschemes.dpcd.vic.gov.au/>