
WASHINGTON WINCH



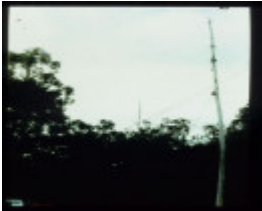
WASHINGTON WINCH



WASHINGTON WINCH



WASHINGTON WINCH



WASHINGTON WINCH



WASHINGTON WINCH

Location

LAKE HILL TRACK NUNNIONG, EAST GIPPSLAND SHIRE

Municipality

EAST GIPPSLAND SHIRE

Level of significance

Heritage Inventory Site

Heritage Inventory (HI) Number

H8423-0013

Heritage Overlay Numbers

HO293

Heritage Listing

Victorian Heritage Inventory

Statement of Significance

Last updated on - August 23, 2005

What is significant?

The Washington Winch at Nugong is the only high lead/skyline logging system in Victoria which still retains a winch engine and the associated spars and cables. The massive logging engine and winch drums were manufactured by the Washington Iron Works in Seattle, USA, and imported to Australia in the 1920s. Ezard Enterprises purchased the engine in 1959 from the Forests Commission of Victoria, and employed it at the head of the Little River catchment for the 1960-61 logging season. Logs were hauled up from a gully using the winch engine in a high lead system, while the skyline system adjacent to the road was used for loading log trucks. The site consists of a twin cylinder, triple drum winch engine, boiler and water tank, all mounted on a large log frame. In addition, two bare tree trunks opposite the engine acted as head and tail spars, each still supporting an array of steel cables for log hauling and spar bracing. A skyline cable suspended between the spars supports the carriage and fall block. Large trees stumps are used as anchor points for both the skyline cable and the bracing cables.

How is it significant?

The Washington Winch, Nugong, is of historical and scientific significance to the State of Victoria.

Why is it significant?

The Washington Winch, Nugong, is historically and scientifically significant as the only intact high lead/skyline logging system within Victoria. The site includes a rare Washington Iron Works Yarding Engine, the only one known to exist in the State, and possibly Australia. The integrity of the winch engine, spar trees, cables and anchor points demonstrate well how the system operated, which facilitated logging in difficult terrain.

[Source: Victorian Heritage Register]

Interpretation of Site	Heritage Inventory Interpretation: Logs were hauled up from the gully to the south using the winch engine in a highlead system, which raised the nose of the logs to permit easier and faster transport. The skyline system adjacent to the road was used for loading road trucks, which delivered logs to Ezard's mill at Swift's Creek.
Hermes Number	11058
Property Number	

History

Heritage Inventory History of Site: Ezard Enterprises shifted their logging operations from the Thomson Valley area to Swifts Creek in 1950. The Washington Winch engine was purchased from the Forests Commission Victoria in 1959 and set up at the head of the Little River Catchment for the 1960/61 logging season. Although three million superfeet of timber were pulled from the bush using this winch/yarding engine, bulldozers and crawler tractors made it obsolescent and it was never used again.

This place/object may be included in the Victorian Heritage Register pursuant to the Heritage Act 2017. Check the Victorian Heritage Database, selecting 'Heritage Victoria' as the place source.

For further details about Heritage Overlay places, contact the relevant local council or go to Planning Schemes Online <http://planningschemes.dpcd.vic.gov.au/>