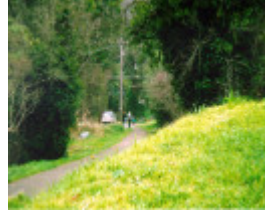

Lovers Walk



Lovers Walk



Lovers Walk

Location

Belgrave VIC 3160

Municipality

YARRA RANGES SHIRE

Level of significance

Included in Heritage Overlay

Heritage Overlay Numbers

HO110

Heritage Listing

Yarra Ranges Shire

Statement of Significance

Last updated on - July 5, 2000

Lovers Walk, section of a longer walk (the Mt. Morton Walking Track), has high local significance as the only early tourist pathway in the Dandenongs, which was made into a public highway. It has historical significance for its associations with Harry Luscombe, the local businessman who promoted Lovers' Walk as an attraction to bring more tourists to Belgrave.

Heritage Study/Consultant Yarra Ranges - Shire of Yarra Ranges Heritage Study, Context Pty Ltd, 2000;
Other Names Belgrave Railway and Mt Morton Walking Track,
Hermes Number 115500
Property Number

Physical Description 1

Lovers Walk links Belgrave Station with Kaola Street to the south. It is a wide, pedestrian path (3 metres), running between private properties. The character of the pathway is largely influenced by the landscaping on these adjoining properties. The path is unmade, except for the section from the station to Station Street (which was not part of the original "walk" - see History). The alignment of the path appears to have become a favoured location for the placement of underground services. Bollards have been placed near the road crossings.

Physical Conditions

Fair

Integrity

Minor Modifications

This place/object may be included in the Victorian Heritage Register pursuant to the Heritage Act 2017. Check the Victorian Heritage Database, selecting 'Heritage Victoria' as the place source.

For further details about Heritage Overlay places, contact the relevant local council or go to Planning Schemes Online <http://planningschemes.dpcd.vic.gov.au/>