

# CLENDON LODGE



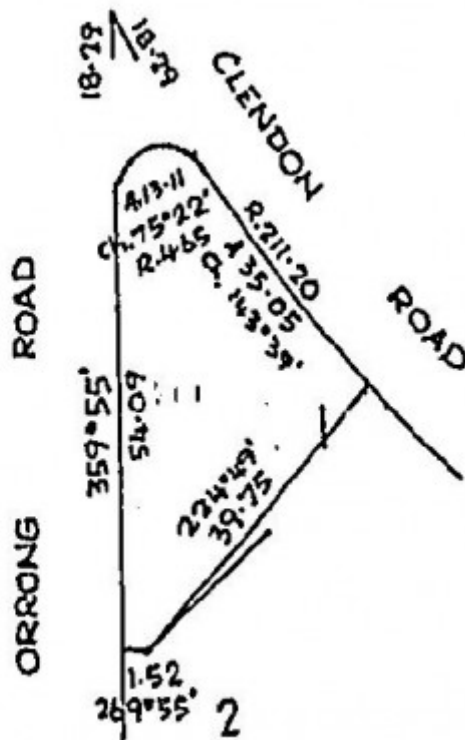
CLENDON LODGE SOHE  
2008



CLENDON LODGE SOHE  
2008



1 clendon lodge clendon rd  
toorak view from street  
feb1986



h00561 plan h0561

## Location

83 CLENDON ROAD TOORAK, STONNINGTON CITY

## Municipality

STONNINGTON CITY

## Level of significance

Registered

## Victorian Heritage Register (VHR) Number

H0561

## Heritage Overlay Numbers

HO22

## VHR Registration

August 29, 1984

## Heritage Listing

Victorian Heritage Register

---

## Statement of Significance

Last updated on - August 25, 1999

What is significant?

Clendon Lodge was designed by the office of Walter Burley Griffin in 1927. It is a two storey, rendered brick residence overlooking a near-triangular front garden formed in the intersection of Clendon and Orrong Roads. The low pitched roof is clad with terra cotta tiles with projecting gable ends and prominent deep overhanging eaves which return into the gables as sun hoods for the corner windows. The horizontality of the design is emphasised by the verandah roof and the repetitive treatment of ten separate windows on the first floor which echo the modular floor plan. The plan of the building is T-shaped. The main elevation comprises a projecting gabled wing and single storey verandah extending across the remainder of the facade. A stone-faced chimney is located at the junction of the projecting front section and the central front door, which itself is framed by coursed, rusticated stone piers. The same contrasting materials of rusticated stone work and smooth rendered brick are used elsewhere in the building's external walls and front fence. The interior combines elegant simplicity with function.

How is it significant?

Clendon Lodge is of architectural significance to the State of Victoria.

Why is it significant?

Clendon Lodge is of architectural significance as a most interesting example of the work of the extremely important architectural practice established by Walter Burley Griffin and Marion Mahony. Griffin and Mahony had come to Australia from America after winning the competition to design a new Federal capital for Australia in 1912. While Griffin was Federal Capital director of design and construction, he also maintained a private practice in Melbourne. While it is not clear whether Griffin was himself responsible for the design of Clendon Lodge, the imprint of his style on the house is obvious. It demonstrates the influence of the Prairie style as brought to Australia by Griffin and adapted to suit local conditions. The Prairie style was most successfully developed by Frank Lloyd Wright in Chicago, where Griffin was also one of its most accomplished exponents. The Prairie School architects sought to achieve a better integration between their structures and the surroundings. Clendon

Lodge is a clear and sophisticated, although somewhat late, example. The house is, thus, an important manifestation of Griffin and Mahony's profound influence on Australian architecture, an influence that is perhaps only now being fully realised, and which ranged from formal architectural inventions to a renewed appreciation of the Australian landscape.

## Permit Exemptions

### General Exemptions:

General exemptions apply to all places and objects included in the Victorian Heritage Register (VHR). General exemptions have been designed to allow everyday activities, maintenance and changes to your property, which don't harm its cultural heritage significance, to proceed without the need to obtain approvals under the Heritage Act 2017.

Places of worship: In some circumstances, you can alter a place of worship to accommodate religious practices without a permit, but you must [notify](#) the Executive Director of Heritage Victoria before you start the works or activities at least 20 business days before the works or activities are to commence.

Subdivision/consolidation: Permit exemptions exist for some subdivisions and consolidations. If the subdivision or consolidation is in accordance with a planning permit granted under Part 4 of the *Planning and Environment Act 1987* and the application for the planning permit was referred to the Executive Director of Heritage Victoria as a determining referral authority, a permit is not required.

Specific exemptions may also apply to your registered place or object. If applicable, these are listed below. Specific exemptions are tailored to the conservation and management needs of an individual registered place or object and set out works and activities that are exempt from the requirements of a permit. Specific exemptions prevail if they conflict with general exemptions.

Find out more about heritage permit exemptions [here](#).

Construction dates	1928,
Architect/Designer	Griffin, Walter Burley,
Heritage Act Categories	Registered place,
Hermes Number	1159
Property Number	

---

## History

Contextual History:History of Place:

Biographical notes on Eric Nicholls:

Nicholls went into Griffin's Melbourne office to replace (Edward) Billson and (Roy) Lippincott when they went to New Zealand. He soon became a favourite of Griffin and by the time of the move to Castlecrag was complete Nicholls was running the Melbourne office. Of all the architects in the Griffin School Nicholls stayed the closest to Griffin in form, detail and planning. Some buildings can be attributed to him individually but his importance must lie in his role as the Melbourne manager. Eventually Nicholls too moved to Sydney.

(From copy of research notes on file, date and authorship not given; possibly by Tim Hubbard)

Associated People: Eric Nicholls

## Plaque Citation

This outstanding Interwar American Bungalow style house, incorporating elements of Frank Lloyd Wright's Chicago Prairie style, was designed in 1927 by the Melbourne office of Walter Burley Griffin and Marion Mahony.

## Extent of Registration

### AMENDMENT OF REGISTER OF HISTORIC BUILDINGS

Historic Building No. 561, Clendon Lodge, 83 Clendon Road, Toorak (to the extent of the whole of Title Volume 5448, Folio 579).

[*Victoria Government Gazette* No. 91 29 August 1984 p. 3017]

---

*This place/object may be included in the Victorian Heritage Register pursuant to the Heritage Act 2017. Check the Victorian Heritage Database, selecting 'Heritage Victoria' as the place source.*

*For further details about Heritage Overlay places, contact the relevant local council or go to Planning Schemes Online <http://planningschemes.dpcd.vic.gov.au/>*