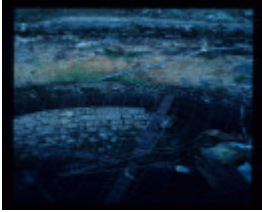

COOPERS CREEK LIME KILN 2



COOPERS CREEK LIME
KILN 2



COOPERS CREEK LIME
KILN 2



COOPERS CREEK LIME
KILN 2



COOPERS CREEK LIME
KILN 2



COOPERS CREEK LIME
KILN 2

Location

COOPERS CREEK MOONDARRA, BAW BAW SHIRE

Municipality

BAW BAW SHIRE

Level of significance

Heritage Inventory Site

Heritage Inventory (HI) Number

H8122-0097

Heritage Listing

Victorian Heritage Inventory

Hermes Number 11648

Property Number

History

Contextual History:History of Place:

Heritage Inventory History of Site:

The town of Coopers Creek was established in 1864 with the discovery of copper deposits. As part of the copper smelting process, it is probable that kilns were erected to produce lime (lime being an essential flux for the smelting of copper).

This place/object may be included in the Victorian Heritage Register pursuant to the Heritage Act 2017. Check the Victorian Heritage Database, selecting 'Heritage Victoria' as the place source.

For further details about Heritage Overlay places, contact the relevant local council or go to Planning Schemes Online <http://planningschemes.dpcd.vic.gov.au/>