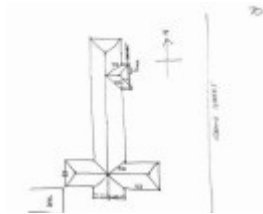


---

# Bacchus Marsh Secondary College. Maddingley Campus



Bacchus Marsh Secondary College. Maddingley Campus



Bacchus Marsh Secondary College. Maddingley Campus



Bacchus Marsh Secondary College. Maddingley Campus

---

## Location

73 Grant Street MADDINGLEY, MOORABOOL SHIRE

## Municipality

MOORABOOL SHIRE

## Level of significance

Included in Heritage Overlay

## Heritage Overlay Numbers

HO162

## Heritage Listing

Moorabool Shire

---

## Statement of Significance

Last updated on - December 19, 1993

A brick Edwardian high school built in 1922, which experienced major post-war development from 1951. The school (at least the 1922 building) is of local historical significance in demonstrating the effect of government action in developing the Community life of the town, in particular its educational life. It is of local architectural significance as a building representative of its type and style: the work of the architects of the Public Works

Department at this time.

Heritage Study/Consultant	Moorabool - Bacchus Marsh Heritage Study 1995, Richard Peterson and Daniel Catrice, 1995;
Construction dates	1957,
Architect/Designer	Smith, Edwin Evan,
Other Names	Bacchus Marsh High School,
Hermes Number	116614
Property Number	

---

## Physical Conditions

Very good.

## Intactness

The terra-cotta Marseilles roofing tiles have been replaced by cement tiles

## Physical Description 1

A red brick, hip-roofed Edwardian high school, with a Latin cruciform plan, Eaves have exposed rafters. A minor hip covers the recessed entry porch, with a skillion hood to the headmaster's office window. Timber brackets support the south end gable, which is timbered roughcast, with a large steel-framed window.

## Historical Australian Themes

Township/Community Life

*This place/object may be included in the Victorian Heritage Register pursuant to the Heritage Act 2017. Check the Victorian Heritage Database, selecting 'Heritage Victoria' as the place source.*

*For further details about Heritage Overlay places, contact the relevant local council or go to Planning Schemes Online <http://planningschemes.dpcd.vic.gov.au/>*