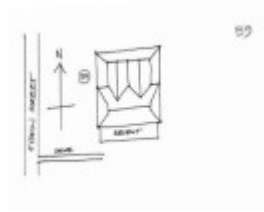

Dwelling, Naheehs



House, Naheehs



House, Naheehs

Location

40 Fisken Street MADDINGLEY, MOORABOOL SHIRE

Municipality

MOORABOOL SHIRE

Level of significance

Included in Heritage Overlay

Heritage Overlay Numbers

HO160

Heritage Listing

Moorabool Shire

Statement of Significance

Last updated on - June 1, 1995

What is significant?

The Farmhouse and its setting at 40 Fisken Street, Maddingley

How is it significant?

The Farmhouse and its setting at 40 Fisken Street, Maddingley is of local historical and aesthetic significance to the Shire of Moorabool.

Why is it significant?

The Farmhouse and its setting at 40 Fiskens Street, Maddingley is of local historical significance for its demonstration of settlement in the Maddingley area for agricultural purposes. The house was built by J. F. Taylor in 1916 for Henry Vallence and his wife Grace Mary (nee Sheehan). This property adjoins the house of George Vallence, who was Henry's father. The property is of historical significance for its associations with the most prominent farming family in the Maddingley area, the Vallence family. It is also important for its associations with local builder J. F. Taylor.

The Farmhouse and its setting at 40 Fiskens Street, Maddingley is of aesthetic significance for its prominent Edwardian brick residence located on the ridge line. The residence is of aesthetic significance for its unusual form with two parallel gables projecting from a broad gambrel roofed wing. Other features of note include the bull nosed verandah on three sides with timber rail valance and timber brackets, half-timbering to the gable ends, and chimneys with render bands, moulds and brackets.

1995

A brick Edwardian house of unusual design, built in 1916.

It is locally significant historically as a representative embodiment of a way of life and historical period. It is locally architecturally significant as a representative variant of an architectural style, intact and in good order.

Heritage Study/Consultant Moorabool - Bacchus Marsh Heritage Study 1995, Richard Peterson and Daniel Catrice, 1995;

Hermes Number 116752

Property Number

Physical Conditions

Excellent

Intactness

Good. There is a recent addition on the south

SIGNIFICANT INTACT ELEMENTS:

FORM. VERANDAH. ROOF FORL'VI. ROOF DECORATION. VERANDAH DECORATION. CHIMNEYS. WINDOWS. PAINTWORK SCHEME.

Physical Description 1

An Edwardian red brick house set on the ridgeline, facing north. It is in an unusual form: the two parallel gables project from a board half-hip wing. There is a bull-nosed verandah around on three sides of the gables, returning to the hip.

This has a timber rail valance and decorative brackets. The upper gables have timbering and jetty, with a metal finial. Chimneys have a render band, moulds and brackets. Paint colours are appropriate.

Historical Australian Themes

Agriculture

Usage/Former Usage

USE: House.

This place/object may be included in the Victorian Heritage Register pursuant to the Heritage Act 2017. Check the Victorian Heritage Database, selecting 'Heritage Victoria' as the place source.

For further details about Heritage Overlay places, contact the relevant local council or go to Planning Schemes Online <http://planningschemes.dpcd.vic.gov.au/>