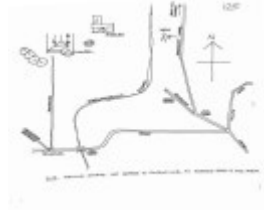


---

## Farmhouse "Hilton"



Hilton.



Hilton.

---

### Location

81 Condons Lane PENTLAND HILLS, MOORABOOL SHIRE

### Municipality

MOORABOOL SHIRE

### Level of significance

Included in Heritage Overlay

### Heritage Overlay Numbers

HO198

### Heritage Listing

Moorabool Shire

---

### Statement of Significance

Last updated on - June 1, 1995

What is significant?

The Farm Complex at 81 Condons Lane, Pentland Hills.

How is it significant?

The Farm Complex at 81 Condons Lane, Pentland Hills is of local historical and aesthetic significance to the Shire of Moorabool.

Why is it significant?

The Farm Complex at 81 Condons Lane, Pentland Hills is of local historical significance as a rare surviving 19th century building in Pentland Hills representing the early farming settlement of the area. Contractor Mr. Tate of Ballan constructed the stone farmhouse for David Robertson in 1878. The farmhouse is of historical significance for its construction from sandstone quarried in the local area. Sandstone from the Pentland Hills quarries was also used in the construction of Victoria's Parliament House. With the retention of early stables and other farm outbuildings, the property is of historical significance for demonstrating the workings of a late 19th century farm.

The Farm Complex at 81 Condons Lane, Pentland Hills is of aesthetic significance for its impressive intact sandstone farmhouse constructed in 1878. Features of note include the overall form with hipped roof and front hipped projecting wing and verandah terminating at the front wing, fine stonework with quoins, the canted bay window to the front wing, and iron lacework frieze and brackets to the front verandah. The early and substantial corrugated iron clad stables located in the immediate vicinity of the farmhouse are of aesthetic significance as an excellent intact example of the building type.

Heritage Study/Consultant	Moorabool - Bacchus Marsh Heritage Study 1995, Richard Peterson and Daniel Catrice, 1995;
Hermes Number	117069
Property Number	

---

## Physical Conditions

Apparently, good.

## Intactness

Apparently very good, as a complex.

SIGNIFICANT INTACT ELEMENTS:

MATERIALS. FORM. VERANDAH. ROOF FORM. CHIMNEYS. WINDOWS. OUTBUILDINGS. VIEWS. REMNANT GARDEN.

## Physical Description 1

A brick farmhouse with sandstone quoins, double-fronted, with the right-hand bay set forward, with a canted bay window. There is a timber verandah in the angle. At right rear is a substantial outbuilding, presumably stables. It has a gable roof across with a central gable facing, and a rear skillion extension. There are remnant plantings. Close access was not possible.

## Historical Australian Themes

Agriculture

## Usage/Former Usage

USE: Farmhouse.

*This place/object may be included in the Victorian Heritage Register pursuant to the Heritage Act 2017. Check the Victorian Heritage Database, selecting 'Heritage Victoria' as the place source.*

*For further details about Heritage Overlay places, contact the relevant local council or go to Planning Schemes Online <http://planningschemes.dpcd.vic.gov.au/>*