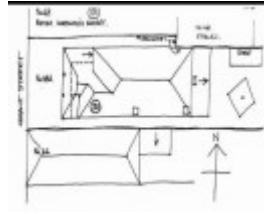


---

## Former Shop and Dwelling, 48 & 48A Grant Street.



House,48A Grant Street



House,48A Grant Street

---

### Location

48 and 48A Grant Street BACCHUS MARSH, MOORABOOL SHIRE

### Municipality

MOORABOOL SHIRE

### Level of significance

Included in Heritage Overlay

### Heritage Overlay Numbers

HO80

### Heritage Listing

Moorabool Shire

---

### Statement of Significance

Last updated on - June 1, 1995

What is significant?

The Shop and Residence at 48 and 48A Grant Street, Bacchus Marsh.

How is it significant?

The Shop and Residence at 48 and 48A Grant Street, Bacchus Marsh are of local historical and aesthetic significance to the Shire of Moorabool.

## Why is it significant?

The Shop and Residence at 48 and 48A Grant Street, Bacchus Marsh are of historical importance for demonstrating a prosperous period in the history of the Bacchus Marsh Shire in the late 19th and early 20th centuries stimulated by farming, industry and closer settlement. Along with other shops and associated residences in Grant Street from this period, this property contributes to a group of significant buildings that represent the early commercial development along Grant Street, stimulated by new residential development in the nearby Maddingley. It is significant as a representative embodiment of the way of life and the operation of food processing in the Edwardian period and for its associations with the locally important Alkemade family.

The Shop and Residence at 48 and 48A Grant Street, Bacchus Marsh are of aesthetic significance as an intact and rare surviving example of a combined detached shop and residence building type. It is also a rare surviving example of an early 20th century bakery building. The shop retains important early shopfront features such as the large display windows extending from mid wall height, the central recessed entry, framed highlight windows across the entire front, the curved rendered parapet and the skillion roofed verandah over the footpath with signage on the verandah barge board. The residence is of aesthetic significance as an interesting example of a domestic Edwardian style building constrained on an urban site, but with the complexity of a larger dwelling. The unusual v-profile timber fretwork to the front verandah is a particular feature of note.

## Previous Statement

A detached Edwardian house with a complicated roof design, which with the adjoining shop (ref: 131) was built in 1909 to the design of the owner, Cornelius L.T. van Alkemade and leased to a baker, who operated a bakery in the adjacent shop.

It is of local historical significance as a representative embodiment of the way of life in the Edwardian period and for its association with the locally important Alkemade family. It is of local architectural significance as a representative, yet most interesting, example of the domestic Edwardian style, and of a surviving example of a building type, as a small town house on a constrained urban site.

Heritage Study/Consultant	Moorabool - Bacchus Marsh Heritage Study 1995, Richard Peterson and Daniel Catrice, 1995;
Architect/Designer	van Alkemade, Cornelius LT,
Hermes Number	117086
Property Number	

---

## Physical Conditions

Good

## Intactness

Excellent. The verandah floor has been replaced with a concrete slab and the fence pickets replaced.

SIGNIFICANT INTACT ELEMENTS:

FORM. FACADE. VERANDAH. ROOF FORM. ROOF DECORATION. VERANDAH DECORATION. WALL DECORATION. DOORS. WINDOWS. PAINTWORK SCHEME. FENCES. CONTEXT 131

## Physical Description 1

A detached Edwardian house on a narrow block of a most complex roof design contained within a rectangle. The hip-roof has a projecting half-hip at the front meeting the hip in two stages, which allows a projecting section of the main hip at the right. The gable is timbered roughcast with a turned timber finial. Beneath the roof and within its tiny width, the facade is triple-fronted. The central bay projects, with the entrance recessed at left. The verandah, beneath the main half-hips, has turned timber posts with unusual V - shaped valance rails. The brickwork of the red brick walls is tuckpointed, with a render band at cill level. The window is a casement pair with highlight.

## **Historical Australian Themes**

Townships.

## **Usage/Former Usage**

USE: House and adjacent stop.

*This place/object may be included in the Victorian Heritage Register pursuant to the Heritage Act 2017. Check the Victorian Heritage Database, selecting 'Heritage Victoria' as the place source.*

*For further details about Heritage Overlay places, contact the relevant local council or go to Planning Schemes Online <http://planningschemes.dpcd.vic.gov.au/>*