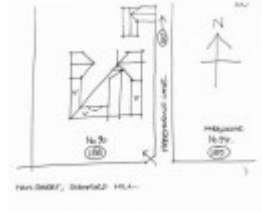

Dwelling and Garden, 88- 90 Main Street



House, 90 Main Street



House, 90 Main Street

Location

88-90 Main Street BACCHUS MARSH, MOORABOOL SHIRE

Municipality

MOORABOOL SHIRE

Level of significance

Included in Heritage Overlay

Heritage Overlay Numbers

HO101

Heritage Listing

Moorabool Shire

Statement of Significance

Last updated on - July 10, 2015

What is significant?

The Residence and its setting at 88-90 Main Street, Bacchus Marsh.

How is it significant?

The Residence and its setting at 88-90 Main Street, Bacchus Marsh is of local historical and aesthetic significance to the Shire of Moorabool.

Why is it significant?

The Residence and its setting at 88-90 Main Street, Bacchus Marsh is of local historical significance for its demonstration of the prosperous period in the history of Bacchus Marsh stimulated by farming, industry and closer settlement. The residence was built in 1904, and demonstrates the wealth of the owner in its grand nature and location on the Main Street hill. It is likely that the residence was constructed for someone associated with the commercial activities of the town.

The Residence and its setting at 88-90 Main Street, Bacchus Marsh is of aesthetic significance as an excellent intact example of an Edwardian residence with fine detailing and demonstrating key features of the style. Features of note include the triple fronted form with a gambrel roof and projecting gable wings, decorative timber fretwork and brackets to the verandah, decorative timbering to the gable ends, segmented head, triple sash windows and brick soldier coursing with moulding. The set back of the residence from the street with a surrounding garden with established trees, as well as, the prominent location on the Main Street hill contributes to the aesthetic significance of the place.

Heritage Study/Consultant	Moorabool - Bacchus Marsh Heritage Study 1995, Richard Peterson and Daniel Catrice, 1995;
Hermes Number	117610
Property Number	

Physical Conditions

Very good

Intactness

Excellent

SIGNIFICANT INTACT ELDIE:"ITS :

VERANDAH.

VERANDAH DECORATION.

WALL DECORATION. DOORS. WINDOWS. PAINTWORK SCHEME.

UNPAINTED FINISH. OUTBUILDINGS.

GARDEN. remnants

Physical Description 1

A red brick triple-fronted Edwardian house with a half-hip roof There are gabled wings projecting at right front and at both sides well back. There is a timber hip verandah around the left hand angle and at right. This has a decorative fretwork , a gabled rail valance with brackets. The walls over dado height are roughcast, unpainted. The verandah floor has random rubble stone dwarf walls. The front upper gable has Medievalising timbering, a pendant barge and console timber brackets. Its window is a segmented-head triple sash with a brick soldier course and moulding over. Off the lane at rear is a substantial L-shaped brick garage contemporary with the

house.

Much of the house is now obscured by mature garden with several remnant trees.

Physical Description 2

Garden. An old rambling garden with large trees planted around the front lawn, and to the west side of the house. The garden is dominated by a large Silky Oak and Copper Beech, with the other trees providing linked canopies across the lawn. An old gnarled Wisteria completely covers a pergola adjacent to the front of the house, pathways are of Gravel, edged with random granite spawls and the garden bed around the house has a rock retaining wall. Access to the garden is from Freemasons Lane with a gravel driveway to the rear passing the front entrance.

Plant species include : *Salix babylonica*, Weeping Willow. *Cercocarpus robusta*, Silky Oak. *Ulmus procera*, English Oak. *Acer sp.*, Maple. *Coprosma repens*, Mirror Bush. *Crataegus oxyantha*, Hawthorn. *Ilex aquifolium 'Aureo'*, Variegated Holly. *Fagus sylvatica var. purpurea*, Copper Beech. *Virgilia oroboides*, Cape Virgilia. *Citrus limon*, Lemon. *Prunus cerasifera 'Nigra'*, Cotoneaster. *Wistaria sinensis*, Wisteria. *Ligustrum ovalifolium*, Hedge Privet.

Historical Australian Themes

Townships

This place/object may be included in the Victorian Heritage Register pursuant to the Heritage Act 2017. Check the Victorian Heritage Database, selecting 'Heritage Victoria' as the place source.

For further details about Heritage Overlay places, contact the relevant local council or go to Planning Schemes Online <http://planningschemes.dpcd.vic.gov.au/>