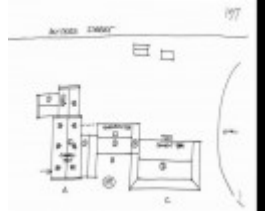
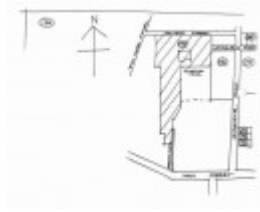

St Bernards Parish Primary School, Chapel, Convent and garden.



St Bernards Parish Primary School.



St Bernards Parish Primary School.



St Bernards Parish Primary School.

Location

9 Patterson Street BACCHUS MARSH, MOORABOOL SHIRE

Municipality

MOORABOOL SHIRE

Level of significance

Included in Heritage Overlay

Heritage Overlay Numbers

HO84

Heritage Listing

Moorabool Shire

Statement of Significance

Last updated on - June 1, 1995

A two-storey brick convent and school, designed by D.A. Little and built in 1900. Also, a brick, Decorated Gothic chapel designed by Kempson and Connolly and opened in 1905. There are various additions between 1914 and 1975.

The complex is of local historical significance for its association with religious and educational developments in the community life of Bacchus Marsh and for demonstrating its association with the Blessed Mother Mary McKillop. It is of local social significance as traditional community focus and meeting place.

The chapel is of local architectural significance as a representative example of the design of Kempson and Connolly and as an intact example of an Edwardian rural chapel in the Decorated Gothic style.

Heritage Study/Consultant	Moorabool - Bacchus Marsh Heritage Study 1995, Richard Peterson and Daniel Catrice, 1995;
Architect/Designer	Kempson & Conolly, Little, DA,
Other Names	St Bernards School Chapel and Convent,
Hermes Number	117794
Property Number	

Physical Conditions

Good. There is vertical cracking on the centre north wall of the Convent.

Intactness

Very Good. The Chapel lacks one parapet cross. It needs maintenance.

Physical Description 1

A. Chapel A red brick Decorated Gothic ecclesiastical building of 1905. It has (rare) green slate gable roof with terra-cotta cresting in a cruciform pattern. There are gable vents. There is a three-bay schoolroom with a smaller room on the axis and the entrance porch going from the side of that. Windows are pointed segmental head with two lancets, the label moulds with foliate steps. There is a render band at cill height. The east end has a triple lancet window. There is a cornice moulding with coved corbels at the gable parapet ends, with gablets.

B. Exterior A gable roofed red brick building of 1926.

C. Convent A two-storey red brick with (unpainted) roughcast and weatherboard infill of 1900. The gable roof has decorative loopy barges and oculus vents. It is double-fronted symmetrically, facing south with a round-headed entry. There are cream-brick dressings on this front. Across it and returning on two sides is a double-storey verandah on brick piers, added later.

Physical Description 2

The Garden. The garden surrounding the convent and chapel indicate that plantings were for functional purposes and for pleasure. A stone embankment and wall is adjacent to the chapel, planted with agapanthus. A large cypress screens the garden from the south. Large peppercorn trees are randomly planted along the east boundary, with specimen trees and shrubs in the lawns and around the perimeter of the buildings. The rear garden has an interesting paved area consisting of, 'crazy paving' in concrete pieces.

Plant species include: *Cupressus macrocarpa*, Monterey Cypress. *Schinus molle*, Peppercorn Tree. *Cotoneaster serotinus*, Cotoneaster. *Prunus armeniaca*, Apricot. *Syringa vulgaris*, Lilac. *Nerium oleander*, Oleander. *Agapanthus orientalis* lalooa, Blue & White Agapanthus. *Coprosma oepens*, Mirror Bush. *Chaenomeles japonica*,

Flowering Quince. *Citrus limon*, Lemon. *Bradrychiton populneus*, Kurrajong. *Ligustrum sinense*, Chinese Privet. *Hedera helix*, English Ivy. Eucalyptus.... *Cedrus altantica 'glauca'*, Blue Atlas Cedar.

This place/object may be included in the Victorian Heritage Register pursuant to the Heritage Act 2017. Check the Victorian Heritage Database, selecting 'Heritage Victoria' as the place source.

For further details about Heritage Overlay places, contact the relevant local council or go to Planning Schemes Online <http://planningschemes.dpcd.vic.gov.au/>