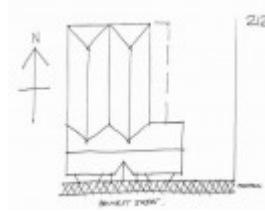


---

## Stone Villa



Stone Villa



Stone Villa



Stone Villa

---

### Location

4 Bennett Street BACCHUS MARSH, MOORABOOL SHIRE

### Municipality

MOORABOOL SHIRE

### Level of significance

Included in Heritage Overlay

### Heritage Overlay Numbers

HO17

### Heritage Listing

Moorabool Shire

---

### Statement of Significance

Last updated on - December 19, 1993

An early Picturesque Gothic ashlar stone house, possibly derived from a pattern-book design, built in 1865 by James Young. Young established the Border Flour Mill, the Border Store and served in various public positions.

The house is locally significant historically as a representative embodiment of a way of life in the mid-1860s and demonstrates its association with important and influential local figure James Young. It is also significant as an early local substantial house.

It is of local architectural significance as a rare (purported) example of the influence of pattern-book designs, and as an intact representative example of the Picturesque Gothic style.

Heritage Study/Consultant	Moorabool - Bacchus Marsh Heritage Study 1995, Richard Peterson and Daniel Catrice, 1995;
Other Names	Parsonage,
Hermes Number	117882
Property Number	

---

## Physical Conditions

Fair only. There is very serious vertical structural cracking. The side walls appear to be rotating.

## Intactness

Very good. The stonework has been painted: Three coats are visible. The rear verandah has been removed.

## Physical Description 1

A Picturesque Gothic limestone ashlar house, its design possibly derived from pattern books. It has a gable roof across, is double fronted and symmetrical, with two canted bay windows and parapets flanking a gable-roofed entrance porch. These bays are hard on the front boundary line. They have deep ovolu moulds, a frieze-mould and in the window soffits, prismatic panels.

The gables and the porch have fine, loopy decorative barges, slot vent and finial. There is a Jacobean label-mould over the four-centred arched entrance and a carved motif: two wreaths inscribing a four-petal flower over a ribbon. The recessed four-panel door has fanlight and sidelights. Other windows have flat architraves and cills. There are rock-face quoins. Dual parallel gables and a verandah project at rear. There is a diamond pattern precast concrete foopath.

## Historical Australian Themes

Townships

## Usage/Former Usage

USE: House

PREVIOUS USE: Parsonage.

*This place/object may be included in the Victorian Heritage Register pursuant to the Heritage Act 2017. Check the Victorian Heritage Database, selecting 'Heritage Victoria' as the place source.*

*For further details about Heritage Overlay places, contact the relevant local council or go to Planning Schemes Online <http://planningschemes.dpcd.vic.gov.au/>*