

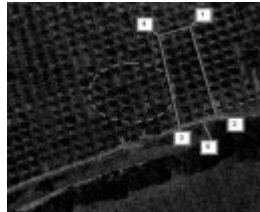
Pear orchard trees (7 plus 27), Apted's Glen Ard orchard



Pear orchard trees, Figure 1
Tree group 1, French seedling tree base, former Buerre Capment graft, now Packham Triumph



Aerial view of early plantings - GROUP 1 - French seedling pear base, 5 examples. AMG: 1..344575,5840949; 2-344575,5840946; 3-344581,5840952; 4-344575,5840950; 5-(Arthurs Creek crossing) 344595, 5840896 (Datum: WGS84)



Aerial view of early plantings - GROUP 2 - Group 2 Williams pears showing main group of 27, with other scattered early examples interplanted with more recent trees within the dotted area. AMG: 1-343932, 5841059; 2-343952,5841012; 3- 343945, 5841006; 4-3



Group 2 early Williams pears, showing the large distance between rows as evidence of horse working.



Group 2 Williams pears, detail

Location

864 COTTLES BRIDGE-STRATHEWEN ROAD ARTHURS CREEK, NILLUMBIK SHIRE

Municipality

NILLUMBIK SHIRE

Level of significance

Included in Heritage Overlay

Heritage Overlay Numbers

HO189

Heritage Listing

Nillumbik Shire

Statement of Significance

Last updated on - September 8, 2009

See also HO197 310 Eagles Nest Road, Arthurs Creek

HERITAGE VALUE Local

REVISED STATEMENT OF SIGNIFICANCE (with AHC criteria)

What is significant?

Apted's Glen Ard early Orchard tree groups, being Williams pears (27x 'Pyrus sp.' var 'William') and 5x French seedling tree base, former Buerre Capment graft, now Packham Triumph (5).

How is it significant?

Apted's Glen Ard orchard early orchard tree groups are historically significant to the Shire of Nillumbik (A4).

Why is it significant?

Apted's Glen Ard orchard early tree groups are significant:

. For their long association with the Apted and other local pioneering families, such as Hempel and Merritt, who have operated orchards here since the 1880s;

. As evidence of a long association with orcharding which was a major industry in this part of the former Eltham Shire in the last decades of the 19th century and the first half of the 20th century but is now rare;

. As early parts of an orchard which was described in 1975 as 'the largest in Southern Victoria' and thus prominent in the local area.

(The above statement of significance has been revised to combined all

elements within the property listing)

Heritage Study/Consultant	Nillumbik - Shire of Nillumbik Planning Scheme Amendment C13 Part 1, Graeme Butler & Assoc., 2006;
Hermes Number	118952
Property Number	

Physical Description 1

ELTHAM STUDY DESCRIPTION:

There are (thought to be) up to 60 Pear trees that are 120 years of age in the orchard, all of which are commercially productive. The orchard contains a variety of other trees of various ages which are maintained as long as they are commercially viable. 9

REVISED DESCRIPTION & CONDITION, 2006

(see annotated aerial photograph, 2006, showing tree locations and digital images)

The old pear tree plantings are thought to have been reduced in number since the above estimate and are in now two major groupings, set among other fruit trees 10.

In addition to the main orchard building complex, a Californian Bungalow further west (CA4, also cited in the Shire of Eltham Heritage Study) was built for George Apted's third son, in the 1930s. It is now owned by Leslie Apted and Sons P/L of 864 Cottles Bridge-Strathewen Road, Arthurs Creek (97148201). This building is a well preserved example of its type and era.

Physical Description 2

Group 1 French seedling tree base, former Buerre Capment graft, now Packham Triumph (5), at 310 Eagles Nest Rd

(Five trees, photographed individually and located as a group via GPS, annotated onto aerial image, see Figure 2).

Located in an orchard at a bend on the north side of Arthurs Creek, these trees have been grafted (reworked) three times in their history as far as the Apted family is able to discover. The original graft is thought to have been in the 1880s as Buerre Capment onto seedlings grown from French imported seed. When George James Apted took over in 1914 these trees were large and 'unwieldy'. He trimmed them back with an axe and reworked them, removing the Buerre Capment. These were reworked or grafted to either Vicar Winkfield or Napoleon in 1914. In 1938 they were reworked, this time to Packham Triumph. Thus the only original part of each tree is the base trunk of an unknown French seedling which is less than a metre high in all cases. Grafting (top working) is a way to change a large tree from old to a new variety. It is also a method of using a root system better adapted to soil or climate than that produced naturally by an ungrafted plant. The girth of a representative tree was 1270mm measured at 762mm above the ground, so they are not large trees. Being part of a productive orchard these trees have always been pruned regularly and generally maintained. As these trees are grafted, the trunk branches dramatically at a low point. Cavities in the forked part of the trunk are already leading to rot and disease. One tree is badly affected. Bark is flaking off some branches, indicating death of those limbs.

In order to preserve these trees the cavities would need appropriate arboreal treatment to prevent further moisture congregating in that location. All dead and diseased wood should also be destroyed.

More research needs to be done to establish the credentials of the Buerre Capment variety of the stock as no reference can be found to this variety by a search on the internet or early references. The current top worked variety of 'Packham Triumph' is common.

Physical Description 3

Group 2 Williams pears (7 plus 27) at 864 Cottlesbridge Strathewen Rd (

Groups of seven scattered trees and twenty seven rowed trees, the 27 photographed individually, and the main group located via GPS, annotated onto aerial image, see Figure 3).

Located in an orchard on the north side of the Cottlesbridge Strathewen Road, seven Williams pear trees of 1880s vintage are intermingled with younger trees set out in five rows, with another larger group of old trees to the east of them,'

Of those seven trees, only two were relatively robust. The other five were showing signs of senescence: flaking bark and dead or dying branches. The main block of 1880s Williams pears consists of 26 out of 27 trees within 3 rows, 9 in each row, with one of the 27 thought to be a Packham pear planted in the 1930s. These trees were thought to be planted by the Hempels around 1880, about the same time as the Arthurs Creek Hall was built". This block of trees was horse worked. The trees had been horse-worked, being trained or pruned initially so they branched out at a higher level than with modern cultivation techniques. This was to enable horses-drawn ploughs and harrows to pass beneath. Orchards were unirrigated in those days. The ground was ploughed and/or harrowed to conserve moisture and eliminate weeds which compete for moisture and prevent air circulation. The Apteds used three horses abreast in those rows of trees and could drive up and down between the rows with a truck when harvesting. These Williams Pears are still growing and fruiting well. They grow well in this district but do even better in the Goulburn Valley. The 'Williams' variety of pear is probably the most common variety grown in orchards. Lindsay Apted says there are many old pear trees around the general area, similar to these specimens but none was specified. Within this group of 1880sWilliams pears, a number of them need arboreal attention to deal with rot (see photos), either in the fork of the tree or up the trunk. All show vigour in the new growth.

This place/object may be included in the Victorian Heritage Register pursuant to the Heritage Act 2017. Check the Victorian Heritage Database, selecting 'Heritage Victoria' as the place source.

For further details about Heritage Overlay places, contact the relevant local council or go to Planning Schemes Online <http://planningschemes.dpcd.vic.gov.au/>