

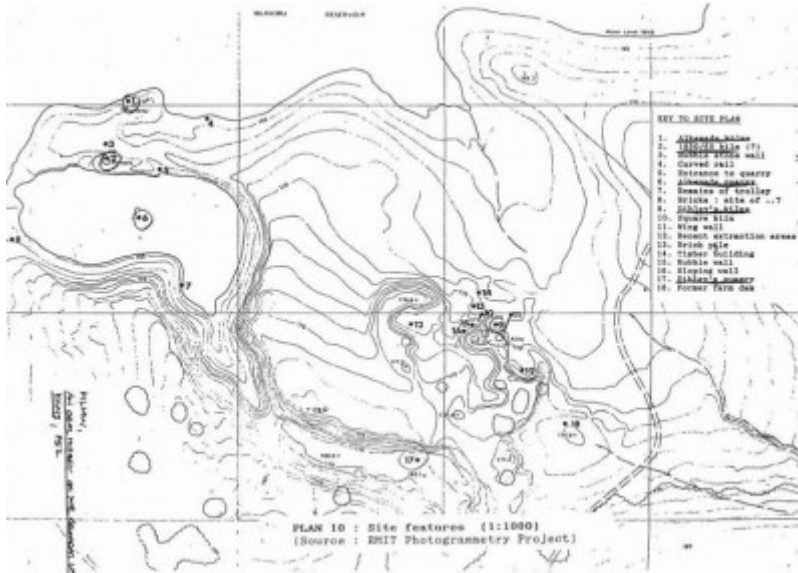
# Lime Kilns - Merrimu Reservoir



Merrimu Reservoir



Merrimu Reservoir



Merrimu Reservoir

---

## Location

CA75,76,76A&B, 80 Gisborne Road COIMADAI, MOORABOOL SHIRE

## Municipality

MOORABOOL SHIRE

## Level of significance

Included in Heritage Overlay

## Heritage Overlay Numbers

HO138

## Heritage Listing

Moorabool Shire

---

## Statement of Significance

Last updated on - June 1, 1995

SIGNIFICANCE:

TYPE : HISTORICAL. ARCHITECTURAL. SCIENTIFIC

Heritage Study/Consultant	Moorabool - Bacchus Marsh Heritage Study 1995, Richard Peterson and Daniel Catrice, 1995;
Other Names	Coimadai Town,
Hermes Number	119221
Property Number	

---

## **Physical Conditions**

The area was flooded c1990

## **Usage/Former Usage**

USE: Water storage.

PREVIOUS USE: Town, lime kilns, quarry etc.

## **Historical Australian Themes**

Mining & quarrying.

## **Intactness**

Under water

SIGNIFICANT INTACT ELEMENTS:

ENGINEERING STRUCTURE.

VIEWS.

*This place/object may be included in the Victorian Heritage Register pursuant to the Heritage Act 2017. Check the Victorian Heritage Database, selecting 'Heritage Victoria' as the place source.*

*For further details about Heritage Overlay places, contact the relevant local council or go to Planning Schemes Online <http://planningschemes.dpcd.vic.gov.au/>*