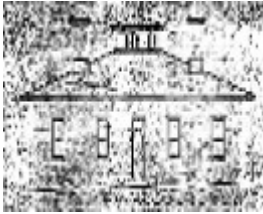
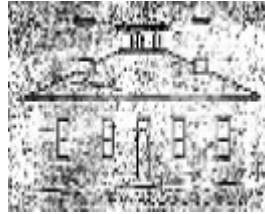


---

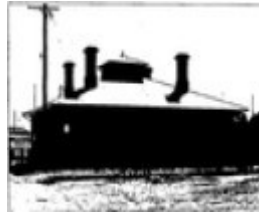
## BALLARAT SALEYARDS OFFICE (FORMER)



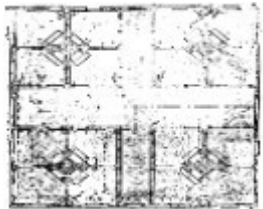
Cattle Yards Office - Ballarat  
Heritage Review, 1998



Cattle Yards Office - Ballarat  
Conservation Study, 1978



Cattle Yards Office02 -  
Ballarat Conservation Study,  
1978



Cattle Yards Office03 -  
Original Plan - Ballarat  
Conservation Study, 1978

---

### Location

1020 LA TROBE STREET, DELACOMBE, BALLARAT CITY

### Municipality

BALLARAT CITY

### Level of significance

Included in Heritage Overlay

### Heritage Overlay Numbers

HO225

### Heritage Listing

Ballarat City

---

## Statement of Significance

Last updated on - April 15, 2024

### What is significant?

The former Ballarat Saleyards (Central Victorian Livestock Exchange), 1020 Latrobe Street, Delacombe, has significance as the longest running and one of the best known and largest Corporation Sale Yards in Victoria, having opened in 1864. Today, the site is reflective of several redevelopment programs resulting in extensive changes to the sheep and cattle pens and fencing and paving - initially between 1882 and 1886, and particularly in the 1960s, 1970s and 1980s. Despite these 20 th Century developments the lineal arrangement of drafting and selling yards and pens are still reflective of 19th century practice.

Significant elements include:

- The single-storey, face red brick Administration Building built in 1909, (both external and internal features).
- An area of sheep yards, representing surviving 19 th and early 20 th century fabric, leading out from the Administration Building, including remnant bluestone pitcher paving, bluestone and timber ramps, rough timber fencing, early signage and sheltered walkway structures.
- The Selling Pavilion built c1963, particularly the intact interior layout.

Non-significant elements include:

- The 1970s extension to the Administration Building.
- Later structures such as water troughs, outbuildings, garages etc (check on site).

### How is it significant?

The Ballarat Saleyards (former) is of local historic, representative, aesthetic, social and associative significance to the City of Ballarat.

### Why is it significant?

The former Ballarat Saleyards, 1020 Latrobe Street, Delacombe, is historically significant as the longest running Corporation Sale Yards in Victoria. Built in 1863 having been laid out by Mr Baird, Town Clerk of the Ballarat Council, and constructed by Messrs. Flanagan and Brazenor (for the cattle yards) and Mr McKenzie (for the sheep pens), the yards were officially opened in February 1864. Since this time, the saleyards have become a regional and state focus for the buying and selling of cattle, sheep and pigs which has manifested in substantial redevelopment programs between 1882 and 1886, and particularly in the 1960s, 1970s and 1980s. (Criterion A)

The Administration Building, Selling Pavilion and areas of bluestone pitcher paving, and associated features are representative of the working arrangements necessary for overseeing and selling stock, which has largely remained unchanged since the early development of stockyards in Victoria. (Criterion D)

The Administration Building is aesthetically significant as a substantially intact example of Federation design associated with saleyards operations. The building is also one of the earliest, substantially built and more intact examples of saleyards Administration buildings in Victoria. (Criterion E)

The Ballarat Saleyards is socially significant as they are valued as a centre for agricultural business between farmers, stock agents and others associated with the livestock industry, a practice that continued on the site for almost 150 years. The saleyards also have associations with a range of 19th and 20th century stock and station agents in Ballarat, including Norman McLeod and Co., Hepburn and Leonard, Powers, Rutherford and Co., Ettorshank Eaglestone and Co., Crawford Dowling Pty Ltd., and Dugald Smith and Co. (Criterion G)

The saleyards have particular associations with William Brazenor (1832-1916), cattle yards inspector, architect and publican of the nearby Cattle Yards Hotel. Brazenor was responsible for the earliest construction of the cattle pens in 1863 and from this time he retained a longstanding association with the yards (this is now reflected in an adjacent street being named after him). One of his largest contracts as an architect was the redesign and re-erection of the cattle and sheep yards between 1882 and 1886, a consequence of the considerable demands on

the yards and the laying out of a branch railway line for the yards (also to his design). With Samuel Valentine (an early cattle inspector of the Ballarat saleyards), Brazenor invented a sheep and merchandise railway wagon that appears to have been specifically designed for the redeveloped saleyards as well as for sheep and merchandise transportation throughout Victoria, New South Wales and Queensland. (Criteria H).

Heritage Study/Consultant	Ballarat - Ballarat Heritage Review, Andrew Ward, 1998; Ballarat - Ballarat Conservation Study, Jacobs Lewis Vines Architects, 1978;
Construction dates	1909, 1963, 1882,
Architect/Designer	Ballarat City Council, City Engineer,
Other Names	Cattle Yards Office (Former),
Hermes Number	120693
Property Number	

---

## Physical Description 1

Ballarat City Council (architects)

*This place/object may be included in the Victorian Heritage Register pursuant to the Heritage Act 2017. Check the Victorian Heritage Database, selecting 'Heritage Victoria' as the place source.*

*For further details about Heritage Overlay places, contact the relevant local council or go to Planning Schemes Online <http://planningschemes.dpcd.vic.gov.au/>*