

---

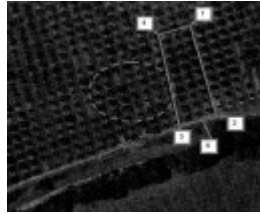
## Five Pear Trees, Apted's Glen Ard Orchard



HO197 5 Pear Trees



HO197 5 Pear Trees



HO197 5 Pear Trees



HO197 5 Pear Trees



HO197 5 Pear Trees

---

### Location

310 Eagles Nest Road ARTHURS CREEK, NILLUMBIK SHIRE

### Municipality

NILLUMBIK SHIRE

### Level of significance

Included in Heritage Overlay

### Heritage Overlay Numbers

HO197

### Heritage Listing

Nillumbik Shire

---

### Statement of Significance

Last updated on -

What is significant?

Apted's Glen Ard early Orchard tree groups, being Williams pears (27x 'Pyrus sp.' var 'William') and 5x French seedling tree base, former *Buerre Capment graft*, now Packham Triumph (5).

**How is it significant?**

Apted's Glen Ard orchard early orchard tree groups are historically significant to the Shire of Nillumbik (A4).

Why is it significant?

Apted's Glen Ard orchard early tree groups are significant:

. For their long association with the Apted and other local pioneering families, such as Hempel and Merritt, who have operated orchards here since the 1880s;

. As evidence of a long association with orcharding which was a major industry in this part of the former Eltham Shire in the last decades of the 19th century and the first half of the 20th century but is now rare;

. As early parts of an orchard which was described in 1975 as 'the largest in Southern Victoria' and thus prominent in the local area.

(The above statement of significance has been revised to combined all elements within the property listing: Graeme Butler & Associates, 2006)

Heritage Study/Consultant	Nillumbik - Shire of Nillumbik Planning Scheme Amendment C13 Part 1, Graeme Butler & Assoc., 2006;
Hermes Number	120997
Property Number	

---

## Physical Description 1

ELTHAM STUDY DESCRIPTION:

There are (thought to be) up to 60 Pear trees that are 120 years of age in the orchard, all of which are commercially productive. The orchard contains a variety of other trees of various ages which are maintained as long as they are commercially viable. 9

REVISED DESCRIPTION & CONDITION, 2006

(see annotated aerial photograph, 2006, showing tree locations and digital images)

The old pear tree plantings are thought to have been reduced in number since the above estimate and are in now two major groupings, set among other fruit trees 10.

In addition to the main orchard building complex, a Californian Bungalow further west (CA4, also cited in the Shire of Eltham Heritage Study) was built for George Apted's third son, in the 1930s. It is now owned by Leslie Apted and Sons P/L of 864 Cottles Bridge-Strathewen Road, Arthurs Creek (97148201). This building is a well preserved example of its type and era.

## Physical Description 2

Group 1 French seedling tree base, former Buerre Capment graft, now Packham Triumph (5), at 310 Eagles Nest Rd

(Five trees, photographed individually and located as a group via GPS, annotated onto aerial image, see Figure 2).

Located in an orchard at a bend on the north side of Arthurs Creek, these trees have been grafted (reworked) three times in their history as far as the Apted family is able to discover. The original graft is thought to have been in the 1880s as Buerre Capment onto seedlings grown from French imported seed. When George James Apted took over in 1914 these trees were large and 'unwieldy'. He trimmed them back with an axe and reworked them, removing the Buerre Capment. These were reworked or grafted to either Vicar Winkfield or Napoleon in 1914. In 1938 they were reworked, this time to Packham Triumph. Thus the only original part of each tree is the base trunk of an unknown French seedling which is less than a metre high in all cases. Grafting (top working) is a way to change a large tree from old to a new variety. It is also a method of using a root system better adapted to soil or climate than that produced naturally by an ungrafted plant. The girth of a representative tree was 1270mm measured at 762mm above the ground, so they are not large trees. Being part of a productive orchard these trees have always been pruned regularly and generally maintained. As these trees are grafted, the trunk branches dramatically at a low point. Cavities in the forked part of the trunk are already leading to rot and disease. One tree is badly affected. Bark is flaking off some branches, indicating death of those limbs.

In order to preserve these trees the cavities would need appropriate arboreal treatment to prevent further moisture congregating in that location. All dead and diseased wood should also be destroyed.

More research needs to be done to establish the credentials of the Buerre Capment variety of the stock as no reference can be found to this variety by a search on the internet or early references. The current top worked variety of 'Packham Triumph' is common.

*This place/object may be included in the Victorian Heritage Register pursuant to the Heritage Act 2017. Check the Victorian Heritage Database, selecting 'Heritage Victoria' as the place source.*

*For further details about Heritage Overlay places, contact the relevant local council or go to Planning Schemes Online <http://planningschemes.dpcd.vic.gov.au/>*