
Railway Conservation Precinct



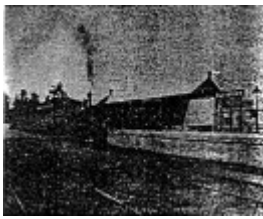
Railway Conservation Precinct - 1983 Buninyong Conservation Study



Railway Conservation Precinct - Panoramic view of Buninyong from former Railway Reserve - 1983 Buninyong Conservation Study



Railway Conservation Precinct - View of railway line embankment and brick culvert - 1983 Buninyong Conservation Study



Railway Conservation Precinct - railway station, this platform is now utilised for a tennis court - 1983 Buninyong Conservation Study



Railway Conservation Precinct - view of railway cutting from Barkley street - 1983 Buninyong Conservation Study

Location

Forest Street and Russell Street. BUNINYONG, BALLARAT CITY

Municipality

BALLARAT CITY

Level of significance

Included in Heritage Overlay

Heritage Listing

Ballarat City

Statement of Significance

Last updated on - November 1, 1983

The railway line from Ballarat to Buninyong was opened on 12 September 1889. The contract for over six miles of railway between Ballarat East and Buninyong was let to Messrs Lewis and Roberts on 13 April 1888, for the sum of 34,825 pounds. This line became a busy country branch for passenger and heavy goods traffic, but from the mid 1920's the passenger service declined. In 1931 passenger services were withdrawn and the line itself was closed beyond Eureka in 1947. Dismantling of the line occurred in the early 1950's.

Several relics of the railway line remain including brick culverts and embankments. The tennis court was later constructed on the railway platform. The surviving form of the railway line provides a picturesque landscape feature and is an important **link** with former social and economic activities in Buninyong.

Heritage Study/Consultant	Ballarat - Buninyong Conservation Study, Colman Sutherland Conservation Consultants, 1983;
Hermes Number	123894
Property Number	

Physical Description 1

Several relics of the railway line remain including brick culverts and embankments. The tennis court was later constructed on the railway platform.

This place/object may be included in the Victorian Heritage Register pursuant to the Heritage Act 2017. Check the Victorian Heritage Database, selecting 'Heritage Victoria' as the place source.

For further details about Heritage Overlay places, contact the relevant local council or go to Planning Schemes Online <http://planningschemes.dpcd.vic.gov.au/>