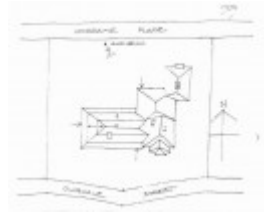


---

## Dwelling "Lorraine", 4 Dugdale Street



Lorraine, 4-6 Dugdale Street ( & rear: Lorraine Place).



Lorraine, 4-6 Dugdale Street ( & rear: Lorraine Place).



Lorraine, 4-6 Dugdale Street ( & rear: Lorraine Place).

---

### Location

4 Dugdale Street BACCHUS MARSH, MOORABOOL SHIRE

### Municipality

MOORABOOL SHIRE

### Level of significance

Included in Heritage Overlay

### Heritage Overlay Numbers

HO61

### Heritage Listing

Moorabool Shire

---

### Statement of Significance

Last updated on - June 1, 1995

What is significant?

The Residence and its setting at 4 Dugdale Street, Bacchus Marsh.

How is it significant?

The Residence and its setting at 4 Dugdale Street, Bacchus Marsh is of local historical and architectural significance to the Shire of Moorabool.

Why is it significant?

The Residence and its setting at 4 Dugdale Street, Bacchus Marsh is of local historical significance for its demonstration of the prosperous period in the history of Bacchus Marsh stimulated by farming, industry and closer settlement. The residence was built in 1912-13 for R.H. Dugdale a wealthy local resident and was sold to Charles Dickie, a director of Lifeguard Milk Products in around 1920. Charles Dickie was the father of Vance Dickie MLC. Vance took over the directorship of Lifeguard Milk Products from 1937 to 1940 and later went on to become a Liberal Government Minister. He served as the member for the Ballarat Electorate from 1856 until 1978. The residence is of local historical significance for its association with these prominent residents.

The Residence and its setting at 4 Dugdale Street, Bacchus Marsh is of aesthetic significance as an architect designed transitional Victorian and Edwardian residence. The building demonstrates key features of both periods of architecture styles. The hipped roofs and bull-nose profile verandah with cast iron Composite order posts are Victorian Italianate details while the terracotta ridge capping and Art nouveau cast iron frieze to the verandah are Edwardian details.

Previous

A large Transitional Edwardian brick house designed by the little known architect Sydney Welson, built in 1912-13 and later occupied by Charles Dickie when its name was changed from Cholderton to Lorraine. It is the largest Edwardian house in the municipality and the largest house in the Town.

It is locally historically significant as a particularly large representative embodiment of a way of life and the social values of the confident period immediately prior to the First World War. It demonstrates an association with the locally important and influential Dickie family.

Finally the house is architecturally significant locally as a rather retrospective, yet still representative example of the domestic Edwardian style.

Heritage Study/Consultant	Moorabool - Bacchus Marsh Heritage Study 1995, Richard Peterson and Daniel Catrice, 1995;
Hermes Number	124290
Property Number	

## Physical Description 1

A large Edwardian (with some residual Italianate characteristics) tuckpointed red brick house, with hip roofs. These are slate, with unglazed terra-cotta cresting and capping. Chimneys are cream and red brick, with mouldings, broad bands of cream bricks and pots. There is a very complicated roof form. The cream brick frieze has timber brackets, as singles and pairs. There is a dado band, painted. The righthand bay is set forward with a canted bay window. There is a bull-nosed verandah on three sides of the left wing. It has cast iron Composite order posts and the cast iron lace of valance and brackets is in a flat Edwardian, almost Art Nouveau pattern. The west front is three bays and symmetrical, with a Romanesque arch over the entry and double windows. There appear to be two major rooms in the north-east corner.

## Physical Conditions

**CONDITIONS & THREATS:** Good. The roof terra-cotta elements have been repointed, poorly. There is rising damp, possibly caused by the concrete slab, and some diagonal cracking.

## **Historical Australian Themes**

Townships

## **Intactness**

Very good. The verandah floor has been replaced with a concrete slab.

*This place/object may be included in the Victorian Heritage Register pursuant to the Heritage Act 2017. Check the Victorian Heritage Database, selecting 'Heritage Victoria' as the place source.*

*For further details about Heritage Overlay places, contact the relevant local council or go to Planning Schemes Online <http://planningschemes.dpcd.vic.gov.au/>*