

Calder Woodburn Memorial Avenue



H01975 1 calder woodburn memorial avenue jh mar98



CALDER WOODBURN MEMORIAL AVENUE SOHE 2008



H01975 calder woodburn memorial avenue2 jh mar98



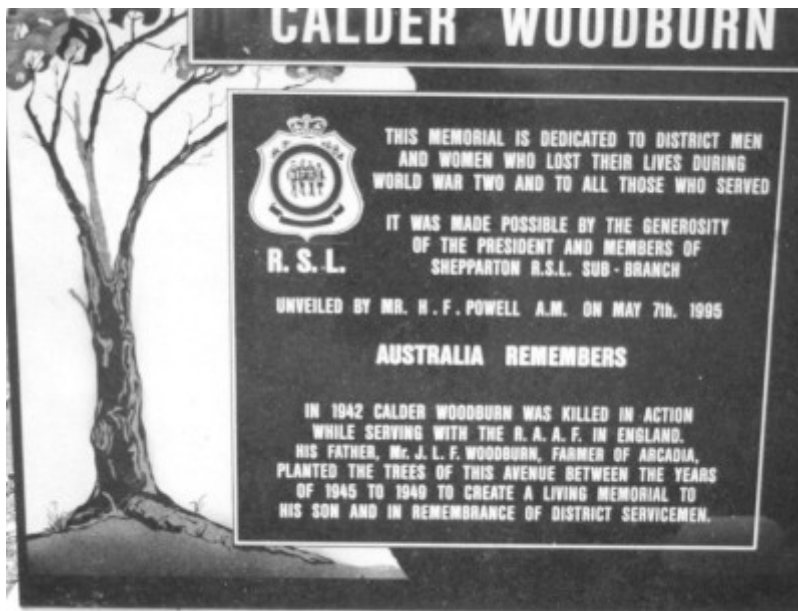
H01975 calder woodburn memorial avenue3 jh mar98



H01975 calder woodburn memorial avenue4 jh mar98



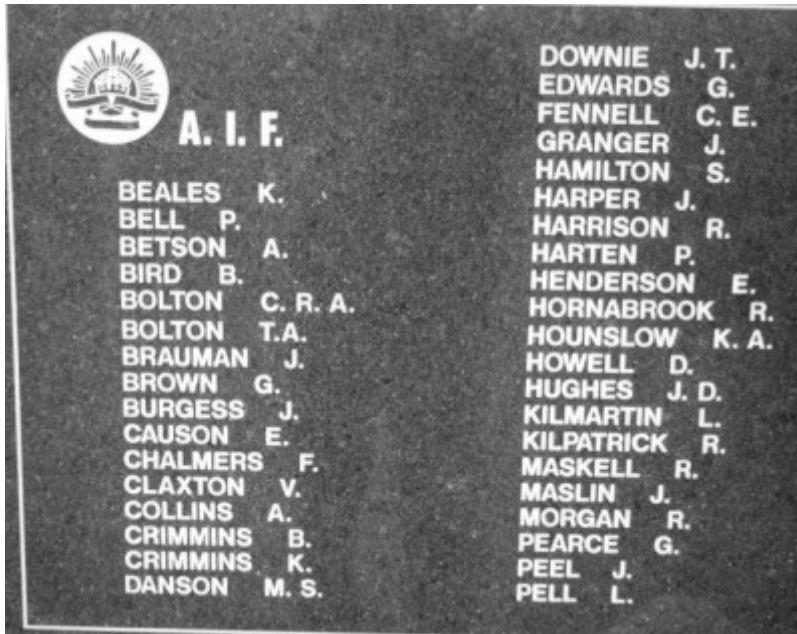
ShepS 1.jpg



ShepS 2.jpg



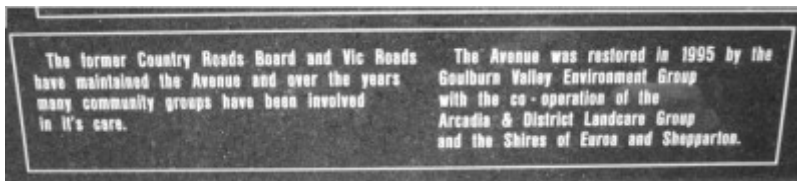
ShepS 3.jpg



ShepS 4.jpg



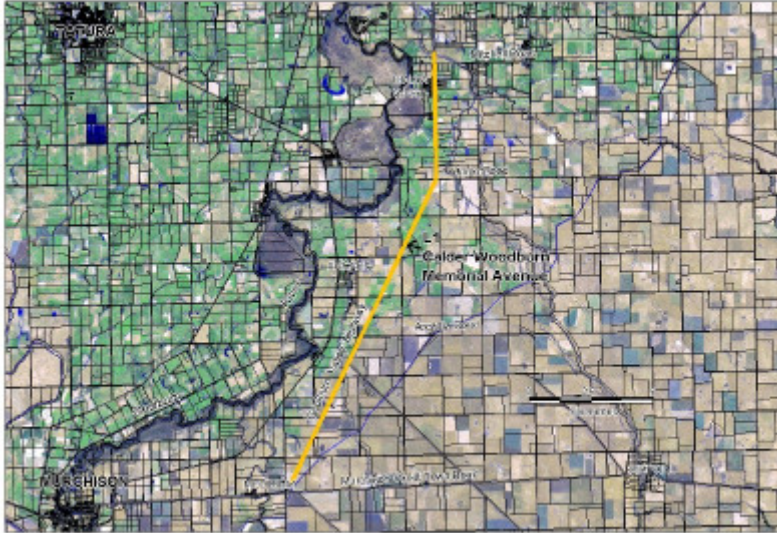
ShepS 5.jpg



ShepS 6.jpg



ShepS 7.jpg



H01975 calder woodburn plan3

Location

GOULBURN VALLEY HIGHWAY ARCADIA and KIALLA WEST and KIALLA and ARCADIA SOUTH, Greater Shepparton City, Strathbogie Shire

Municipality

GREATER SHEPPARTON CITY

STRATHBOGIE SHIRE

Level of significance

-

Victorian Heritage Register (VHR) Number

H1975

Heritage Overlay Numbers

HO22

Heritage Listing

Vic. War Heritage Inventory

Statement of Significance

Last updated on - October 11, 2001

What is significant?

The Calder Woodburn Memorial Avenue was planted between 1945 and 1949 by Mr JLF (Fen) Woodburn as a living memorial to his son Calder who lost his life while serving abroad with the Royal Australian Air Force. Calder Woodburn, a graduate of Dookie Agricultural College, enlisted 1940. He failed to return from a mine laying mission along the French coastline in April 1942. In late 1943 Fen Woodburn offered to plant two rows of trees for a distance of 9.5kms along the Goulburn Valley Highway as a memorial to his son. Starting in 1945, by August 1947 Fen Woodburn had planted all the 1406 trees to complete his original vision. In 1948 he extended by a further 638 trees. In its final form the avenue was extended, in four rows, as far as the Murchison/Violet Town Road in 1949 making a total of 2,457 trees. Woodburn wanted the Avenue to be a memorial to all local servicemen who did not return from the Second World War. Memorial name plates were fixed to 110 of the trees, the trees selected being at the nearest point to the servicemen's homes.

How is it significant?

The Calder Woodburn Memorial Avenue is of historic, aesthetic and social significance to the State of Victoria.

Why is it significant?

The Calder Woodburn Memorial Avenue is historically significant for its commemorative association with servicemen who died during the Second World War. Planted by Fen Woodburn between 1945 and 1949 initially as a memorial to his son Calder, the Avenue is the grandest and largest of the Second World War commemorative planting in Victoria and is important for its use of only *Eucalyptus* species. The use of Australian native trees is particularly historically significant when contrasted to the almost universal use of exotic species for First World War memorial avenues and is consistent with a different view of Australian national consciousness which emerged after the fall of Singapore in 1942.

The Calder Woodburn Memorial Avenue is aesthetically significant as a prominent landscape planting of more than 2,400 trees over a length of nearly 20 kilometres along the Goulburn Valley Highway. About one third are *Eucalyptus camaldulensis*, and the other two thirds consists of roughly equal numbers of *Eucalyptus cladocalyx*, *Eucalyptus microcarpa*, *Eucalyptus melliodora*, *Eucalyptus maculata*, *Eucalyptus polyanthemos*, and *Eucalyptus sideroxylon*. There are some *Eucalyptus leucoxylon*, *Eucalyptus citriodora*, and a few other unidentified *Eucalyptus* species. The whole forms an outstanding designed landscape and roadside planting of a scale and complexity not seen in Victoria. The uniform planting, tree form, size and maturity provides an outstanding landscape forms a dominant feature in the flat surrounding countryside, which is largely cleared for agriculture. The various bark characteristics and the alternating Ironbark and Lemon-scented Gums which provide contrasting texture and colours are also of interest. The visual impression, lineal form, planting density and landscape character of the planting are distinctive and contribute strongly to the experience of the road user. The planting is a rare example in Victoria using four rows of formally planted trees.

The Calder Woodburn Memorial Avenue is socially important for its relationship with the community as a memorial to servicemen who died during the Second World War. The Avenue was conceived as a living memorial and is recognised by the Returned Services League and the community for its continuing commemorative importance.

Heritage Act Categories Registered place,

Hermes Number 125297

Property Number

Physical Description 1

DESCRIPTION OF PLACE:

The Calder Woodburn Memorial Avenue is aesthetically significant as a prominent landscape planting of 2,544 trees in four rows over a length of 19.7kms along the Goulburn Valley Highway. The Avenue planting of 2,457 trees comprising of 786 *Eucalyptus camaldulensis*, 299 *E. cladocalyx*, 47 *E. citriodora*, 235 *E. sideroxylon*, 297 *E. polyanthemos*, 266 *E. microcarpa*, 232 *E. melliodora*, 205 *E. maculata*, 68 *E. leucoxylon* and 22 unknown Eucalyptus species forms an outstanding designed landscape and roadside planting of a scale and complexity rarely seen in Victoria. The uniform planting, tree form, size and maturity provides an outstanding landscape which is a dominant feature in the flat rural landscape, which is largely cleared for agriculture. The various bark characteristics and the alternate Ironbark and Lemon-scented Gums which provide contrasting texture and colours are also of interest. The visual impression, lineal form, planting density and landscape character of the planting is distinct and contributes strongly to the experience of the road user. The planting is a rare example in Victoria which uses four rows of formally planted trees.

Physical Conditions

State of the Historic Environment survey report - condition: good. See Events.

Veterans Description for Public

The Calder Woodburn Memorial Avenue was planted between 1945 and 1949 by Mr JLF (Fen) Woodburn as a living memorial to his son Calder who lost his life while serving abroad with the Royal Australian Air Force. Calder Woodburn, a graduate of Dookie Agricultural College, enlisted in 1940. In April 1942, Calder failed to return from a mine laying mission along the French coastline. In late 1943, Fen Woodburn offered to plant two rows of trees for a distance of 9.5kms along the Goulburn Valley Highway as a memorial to his son. Starting in 1945, by August 1947 Fen Woodburn had planted all the 1406 trees to complete his original vision. In 1948 he extended by a further 638 trees. In its final form the avenue was extended, in four rows, as far as the Murchison-Violet Town Road in 1949 making a total of 2,457 trees.

A total of 2,457 trees were planted along a 19.7km stretch of the Goulburn Valley Highway and most of the original plantings remain today. The trees are in two rows on either side of the road, the distance between the two rows adjacent to the road being 20.4m (of which the road surface occupies 7.5m) and the distance from these to the outer row is 10.2m. The trees in each row were planted between 21m and 24m apart.

Woodburn wanted the Avenue to be a memorial to all local servicemen who did not return from the Second World War. Memorial name plates were fixed to 110 of the trees, the trees selected being at the nearest point to the servicemen's homes.

The Calder Woodburn Memorial Avenue is historically significant for its commemorative association with servicemen who died during the Second World War. Planted by Fen Woodburn between 1945 and 1949 initially as a memorial to his son Calder, the Avenue is the grandest and largest of the Second World War commemorative planting in Victoria and is important for its use of only Eucalyptus species. The use of Australian native trees is particularly historically significant when contrasted to the almost universal use of exotic species for First World War memorial avenues and is consistent with a different view of Australian national consciousness which emerged after the fall of Singapore in 1942.

The Calder Woodburn Memorial Avenue is aesthetically significant as a prominent landscape planting of more than 2,400 trees over a length of nearly 20 kilometres along the Goulburn Valley Highway. About one third are *Eucalyptus camaldulensis*, and the other two thirds consists of roughly equal numbers of *Eucalyptus cladocalyx*, *Eucalyptus microcarpa*, *Eucalyptus melliodora*, *Eucalyptus maculata*, *Eucalyptus polyanthemos*, and *Eucalyptus sideroxylon*. There are some *Eucalyptus leucoxylon*, *Eucalyptus citriodora*, and a few other unidentified Eucalyptus species. The whole forms an outstanding designed landscape and roadside planting of a scale and complexity not seen in Victoria. The uniform planting, tree form, size and maturity provides an outstanding landscape forms a dominant feature in the flat surrounding countryside, which is largely cleared for agriculture. The various bark characteristics and the alternating Ironbark and Lemon-scented Gums which provide contrasting texture and colours are also of interest. The visual impression, lineal form, planting density and landscape character of the planting are distinctive and contribute strongly to the experience of the road user. The planting is a rare example in Victoria using four rows of formally planted trees.

The Calder Woodburn Memorial Avenue is socially important for its relationship with the community as a memorial to servicemen who died during the Second World War. The Avenue was conceived as a living memorial and is recognised by the Returned Services League and the community for its continuing commemorative importance.

The Calder Woodburn Memorial Avenue is aesthetically significant as a prominent landscape planting of 2,544 trees in four rows over a length of 19.7kms along the Goulburn Valley Highway. The Avenue planting of 2,457 trees comprising of 786 *Eucalyptus camaldulensis*, 299 *E. cladocalyx*, 47 *E. citriodora*, 235 *E. sideroxylon*, 297 *E. polyanthemos*, 266 *E. microcarpa*, 232 *E. melliodora*, 205 *E. maculata*, 68 *E. leucoxylon* and 22 unknown *Eucalyptus* species forms an outstanding designed landscape and roadside planting of a scale and complexity rarely seen in Victoria. The uniform planting, tree form, size and maturity provides an outstanding landscape which is a dominant feature in the flat rural landscape, which is largely cleared for agriculture. The various bark characteristics and the alternate Ironbark and Lemon-scented Gums which provide contrasting texture and colours are also of interest. The visual impression, lineal form, planting density and landscape character of the planting is distinct and contributes strongly to the experience of the road user. The planting is a rare example in Victoria which uses four rows of formally planted trees.

The Calder Woodburn Memorial Avenue is socially important due to relationship with the community as a memorial to servicemen who lost their life during the Second World War. The Avenue was conceived as living memorial and is recognised by the Returned Services League for its commemorative importance. The unveiling of a memorial in 1995, listing the names of lost servicemen, continues the community appreciation and memorial values of the Avenue.

Extent of Registration

1. All of the land marked L1 on Diagram Number 1975 held by the Executive Director being the Goulburn Valley Highway road reserve extending approximately 19.7km between the Murchison-Violet Town Road and Seven Creeks but excluding the road pavement and shoulders to a width of 13.0m from the centre line of the road./n
2. All of the *Eucalyptus* spp. trees planted in four rows along the Goulburn Valley Highway and all of the memorial name plaques associated with 110 of the trees within the land marked L1 on Diagram Number 1975 held by the Executive Director.

This place/object may be included in the Victorian Heritage Register pursuant to the Heritage Act 2017. Check the Victorian Heritage Database, selecting 'Heritage Victoria' as the place source.

For further details about Heritage Overlay places, contact the relevant local council or go to Planning Schemes Online <http://planningschemes.dpcd.vic.gov.au/>