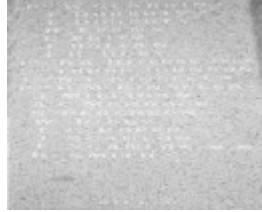

Cora Lynn War Memorial



Cora L 1.jpg



Cora L 2.jpg



Cora L 3.jpg



Cora L 4.jpg

Location

off Nine Mile Road CORA LYNN, Cardinia Shire

Municipality

CARDINIA SHIRE

Level of significance

-

Heritage Listing

Vic. War Heritage Inventory

Statement of Significance

Last updated on -

Built sometime in the 1920s the Cora Lynn war memorial is significant to the locality of Cora Lynn, as one of the few early public structures in this small town and hence (with the store and butter factory) aids in demarcating the

town itself. The memorial is significant for its reflection of the effects on the community of the Great War; its landmark quality and the application of stone craftsmanship.

Local Significance

Inscriptions:

Cora Lynns / tribute of love / and gratitude / to her glorious / dead and to her / returned men / who fought to keep
our / Empire free.

Pte. W. Clarkin* / F. Doherty* / L.Doherty / H. Evans / L. Fritz / J. Holihan / J.R. Hue

Lieut R.A. Jeffers MM DCM

Sgt Tudor Johnson

Tpr N.F. Kinsella

Pte B.M. Kinsella* / J. Milligan* / A.C. Murdock / M. Perderson / W. Rigby / T.G. Roper / J. Scanlon / T.Scanlon
MM / B.Smith*

Heritage Study/Consultant	Cardinia - Cardinia Shire Heritage Study 1996, Graeme Butler & Associates, 1996;
Construction dates	1920,
Other Names	off Nine Mile Road, Cora Lynn,
Hermes Number	125640
Property Number	

Physical Description 1

The upper section of this granite obelisk is in the traditional tapered form, in a dressed finish, and the lower tiered sections are in a quarry-faced stone. The base, and fence piers are cement-rendered, with pipe rails, and appear to be of a later construction date. This concurs with the advice that the monument has been moved. The

Physical Conditions

Given the relocation, generally original.

Historical Australian Themes

Themes

- 8.7 Swamp towns
- 9.3 Churches and cemeteries

Veterans Description for Public

The Cora Lynn War Memorial is located off Nine Mile Road. The upper section of this granite obelisk is in the traditional tapered form, in a dressed finish, and the lower tiered sections are in a quarry-faced stone. The base, and fence piers are cement-rendered, with pipe rails, and appear to be of a later construction date. This concurs with the advice that the monument has been moved. The Cora Lynn War Memorial was established to commemorate locals who served in the First World War.

This place/object may be included in the Victorian Heritage Register pursuant to the Heritage Act 2017. Check the Victorian Heritage Database, selecting 'Heritage Victoria' as the place source.

For further details about Heritage Overlay places, contact the relevant local council or go to Planning Schemes Online <http://planningschemes.dpcd.vic.gov.au/>