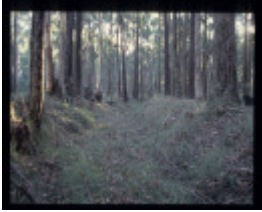

LYON'S TRAMWAY CUTTING



LYON'S TRAMWAY
CUTTING

Location

BLIGHS ROAD TRENTHAM, HEPBURN SHIRE

Municipality

HEPBURN SHIRE

Level of significance

Heritage Inventory Site

Heritage Inventory (HI) Number

H7723-1137

Heritage Listing

Victorian Heritage Inventory

Statement of Significance

Last updated on -

Sole surviving section of a regionally important tramway supplying the mining industry with sawn timber.

Interpretation of Site THE CUTTING IS APPROX 2-6M WIDE AT THE BASE AND 4.2M WIDE AT THE TOP THE FLOOR OF THE CUTTING CARRIES IMPRESSIONS OF THE STRINGER-AND-PRINCIPAL METHOD OF TRAMWAY CONSTRUCTION. THE TRAMWAY ORIGINALLY LINKED A SAWMILL FOUR MILES WEST OF TRENTHAM TO THE TOWNSHIP.

Hermes Number 12596

Property Number

History

CHARLES COWLE ESTABLISHED A SAWMILL 4 MILES WEST OF TRENTHAM IN 1868. A TRAMWAY WAS BUILT FROM THE MILL IN 1874 TO A DEPOT IN TRENTHAM. THE TRAMWAY WAS BUILT USING THE PRINCIPAL-AND-STRINGER METHOD TO A GAUGE OF AROUND 5FT. THE MILL WAS PURCHASED BY JAMES LYON IN 1877. WHEN THE DAYLESFORD RAILWAY WAS CONSTRUCTD IN 1880, IT PASSED CLOSE TOTHE MILL SO THE OUTLET TRAMWAY WAS USED INSTEAD FOR LOGGING. HORATION WEATHERHEAD OPERATED THE MILL INTERMITTENTLY DURING THE 1890S UNTIL IT CLOSED IN 1902.

This place/object may be included in the Victorian Heritage Register pursuant to the Heritage Act 2017. Check the Victorian Heritage Database, selecting 'Heritage Victoria' as the place source.

For further details about Heritage Overlay places, contact the relevant local council or go to Planning Schemes Online <http://planningschemes.dpcd.vic.gov.au/>