

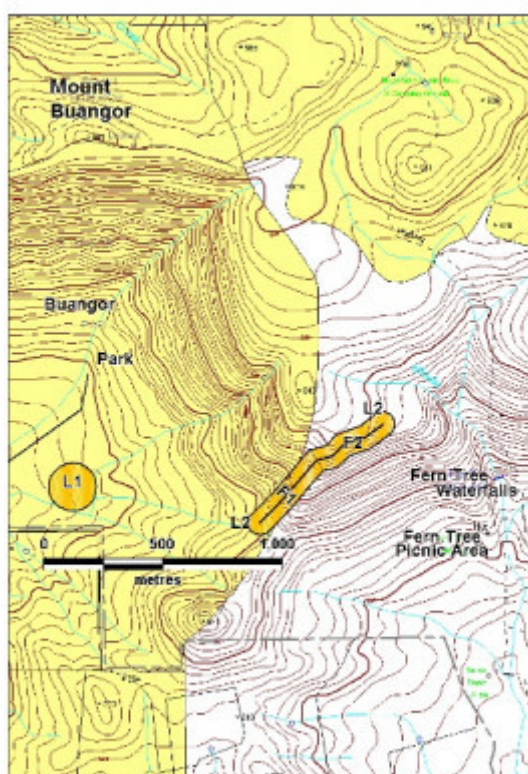
KOZMINSKY'S MILL & LOG CHUTE



H02018 kozminskys mill and
log chute chute



H02018 kozminskys mill and
log chute mill site



H02018 kozminskys mill and log chute plan

Location

MOUNT BUANGOR STATE PARK BAYINDEEN AND MOUNT BUANGOR STATE PARK RAGLAN, ARARAT
RURAL CITY, PYRENEES SHIRE

Municipality

ARARAT RURAL CITY

PYRENEES SHIRE

Level of significance

Registered

Victorian Heritage Register (VHR) Number

H2018

Heritage Overlay Numbers

HO51

HO118

VHR Registration

March 20, 2003

Heritage Listing

Victorian Heritage Register

Statement of Significance

Last updated on - March 20, 2003

What is significant?

Kozminsky's mill and log chute is a rare surviving example of a large sawmill and log delivery system which operated during the early period of Victorian timber-getting. Marks Kozminsky established the mill in partnership with David Sanderson in 1876. The site features the intact formations of a wagon track and log chute descending from the plateau of Mount Buangor, east of Ararat. Large eucalypts growing in the chute reinforce its nineteenth-century origin. At the mill, a four-metre-deep pit for the vertical breaking-down saw is the deepest recorded in Victoria to date. The sawdust trench and other earthworks are large and very well preserved. The mill closed in 1879.

How is it significant?

Kozminsky's mill and log chute is of historical and scientific significance to the State of Victoria.

Why is it significant?

Kozminsky's mill and log chute is historically and scientifically significant as a comparatively intact nineteenth-century sawmill and log delivery route. Log chutes are rare in Victoria and Kozminsky's is one of the best preserved of its type known. The remains of the logging route illustrate the construction methods and engineering features required to operate in steeply forested terrain in this period. The site is significant for its potential to provide evidence relating to the technological history of the sawmilling industry.

Permit Exemptions

General Exemptions:

General exemptions apply to all places and objects included in the Victorian Heritage Register (VHR). General exemptions have been designed to allow everyday activities, maintenance and changes to your property, which

don't harm its cultural heritage significance, to proceed without the need to obtain approvals under the Heritage Act 2017.

Places of worship: In some circumstances, you can alter a place of worship to accommodate religious practices without a permit, but you must **notify** the Executive Director of Heritage Victoria before you start the works or activities at least 20 business days before the works or activities are to commence.

Subdivision/consolidation: Permit exemptions exist for some subdivisions and consolidations. If the subdivision or consolidation is in accordance with a planning permit granted under Part 4 of the *Planning and Environment Act 1987* and the application for the planning permit was referred to the Executive Director of Heritage Victoria as a determining referral authority, a permit is not required.

Specific exemptions may also apply to your registered place or object. If applicable, these are listed below. Specific exemptions are tailored to the conservation and management needs of an individual registered place or object and set out works and activities that are exempt from the requirements of a permit. Specific exemptions prevail if they conflict with general exemptions.

Find out more about heritage permit exemptions [here](#).

Specific Exemptions:

General Conditions: 1. All exempted alterations are to be planned and carried out in a manner which prevents damage to the fabric of the registered place or object. General Conditions: 2. Should it become apparent during further inspection or the carrying out of alterations that original or previously hidden or inaccessible details of the place or object are revealed which relate to the significance of the place or object, then the exemption covering such alteration shall cease and the Executive Director shall be notified as soon as possible. General Conditions: 3. If there is a conservation policy and plan approved by the Executive Director, all works shall be in accordance with it. General Conditions: 4. Nothing in this declaration prevents the Executive Director from amending or rescinding all or any of the permit exemptions. General Conditions: 5. Nothing in this declaration exempts owners or their agents from the responsibility to seek relevant planning or building permits from the responsible authority where applicable.

EXEMPTIONS:

- * Preliminary Mineral Exploration work
- * Fire suppression duties
- * Weed and vermin control
- * Public safety
- * Rehabilitation, protective and stabilisation works
- * Information signage - for interpretation and prevention of public risk

Construction dates	1876,
Heritage Act Categories	Registered archaeological place,
Hermes Number	12633
Property Number	

History

Marks Kozminsky was born in Prussia in 1844 and migrated to Australia in 1860. By 1872 he was the proprietor of a large general store at Buangor and was an important and influential member of the local community. In 1876 he took out a sawmill licence in partnership with David Sanderson. The mill was located on the upper reaches of

McLeod Creek, with Mount Buangor to the north. A chute was constructed down a spur dividing Middle and McLeod Creeks to ensure a supply of logs from the plateau high above the mill. The partnership between the mill owners was dissolved in 1879 and the mill was closed the following year. Kozminsky moved to Nhill where he resumed business as a storekeeper, dying in 1895 at the age of 51.

Extent of Registration

NOTICE OF REGISTRATION

As Executive Director for the purpose of the Heritage Act, I give notice under Section 46 that the Victorian Heritage Register is amended in that Heritage Register Number H2018 in the category described as Archaeological place

Kozminsky's Mill & Log Chute, Mt Buangor State Forest, Ararat Rural Council.

EXTENT:

1. All of the Crown Land including earthworks, surface and subsurface artefacts and any other remains of sawmilling activity within a radius of 100 metres of the point with longitude 143.21899, latitude 37.30998, shown as L1 on Diagram 2018 held by the Executive Director.
2. Kozminsky's log chute and all the Crown Land on each side of it for 50 metres, from its head at longitude 143.23048, latitude 37.30897, to its lower terminus beside Saddle Road at longitude 143.22784, latitude 37.31132, shown as F1 and part of L2 on diagram 2018 held by the Executive Director.
3. Kozminsky's wagon track and all the Crown Land on each side of it for 50 metres, from its upper terminus at longitude 143.23364, latitude 37.30758, to its lower terminus at longitude 143.23048, latitude 37.30897 shown as F2 and part of L2 on diagram 2018 held by the Executive Director.

Dated 20 March 2003

RAY TONKIN
Executive Director

[Victoria Government Gazette G 12 20 March 2003 487]

This place/object may be included in the Victorian Heritage Register pursuant to the Heritage Act 2017. Check the Victorian Heritage Database, selecting 'Heritage Victoria' as the place source.

For further details about Heritage Overlay places, contact the relevant local council or go to Planning Schemes Online <http://planningschemes.dpcd.vic.gov.au/>